

**QUIC-LADDER™ SWING OUT & DOWN  
VEHICLE LADDER**



Patent Nos.  
D442,289  
6,378,654

**Stores ladder parallel to the body.**

**Release the locking handle and pull the ladder out to a comfortable climbing angle.**

**The ladder automatically latches and will not retract until the scissor lock is raised.**

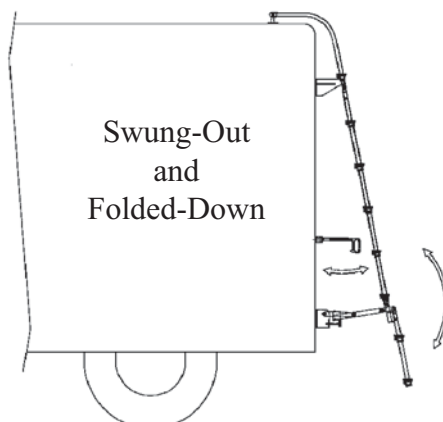
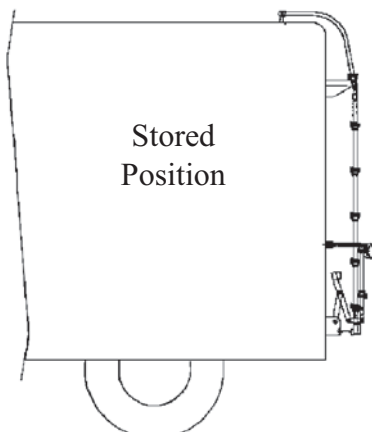
"Standard configuration has a two-rung fold-down section and a six-rung main ladder section. Other models available to fit your application. Provide us with a rear end dimensional print of your vehicle and we will design a ladder for your application.

Cast aluminum rungs have a flat, non-skid surface to provide traction and safety. Each step is 3" deep.

The width will vary depending on which of the three styles is used.

MODEL	DESCRIPTION
RL-x-x	Standard Width Vehicle Ladder
RL12-x-x	12" Wide Vehicle Ladder
RL15-x-x	15" Wide Vehicle Ladder

The x-x will be replaced with number of rungs for each section.

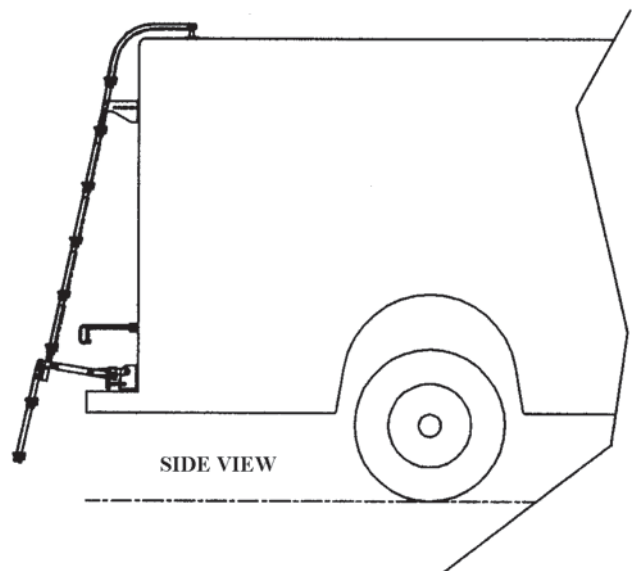
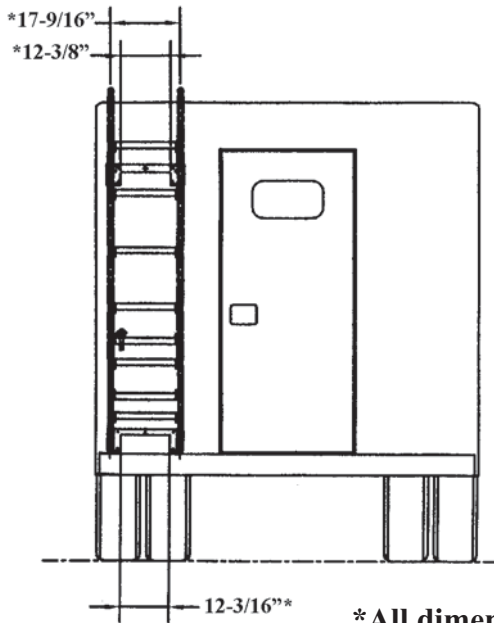
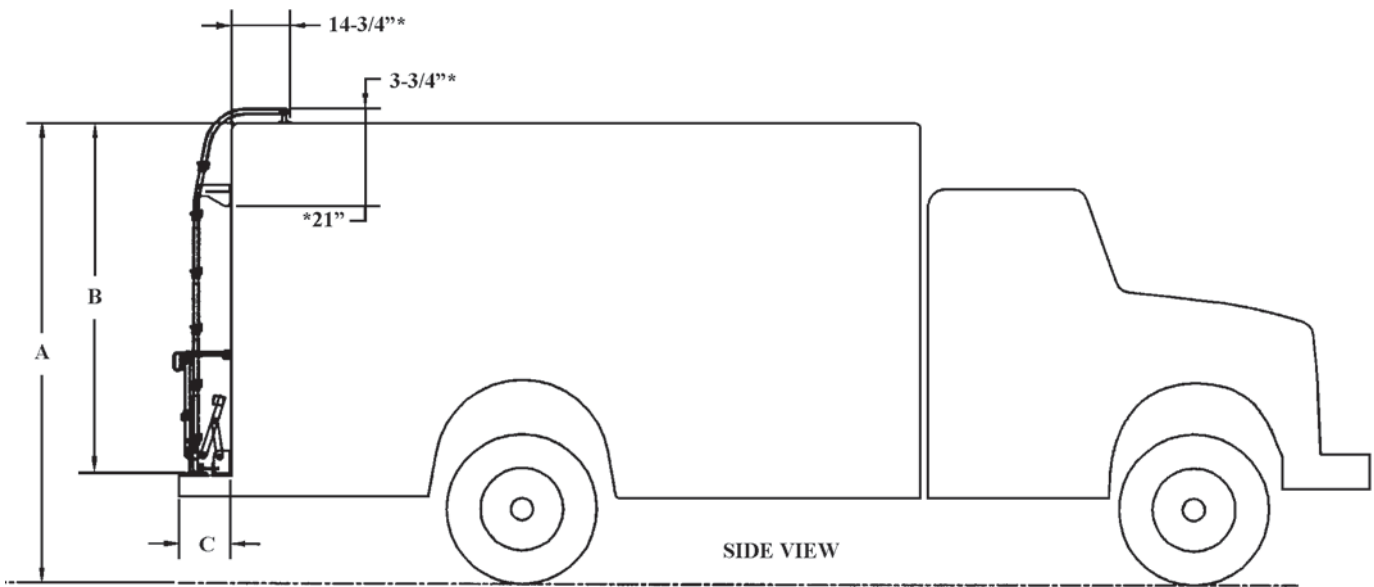


Handrails are 1-1/4" heavy-walled aluminum tubing, covered in a rough grip black powder coat, which provides a firm gripping surface.

**Initial Consultation**

Ziamatic will fax customer the drawings below and request the following dimensions:

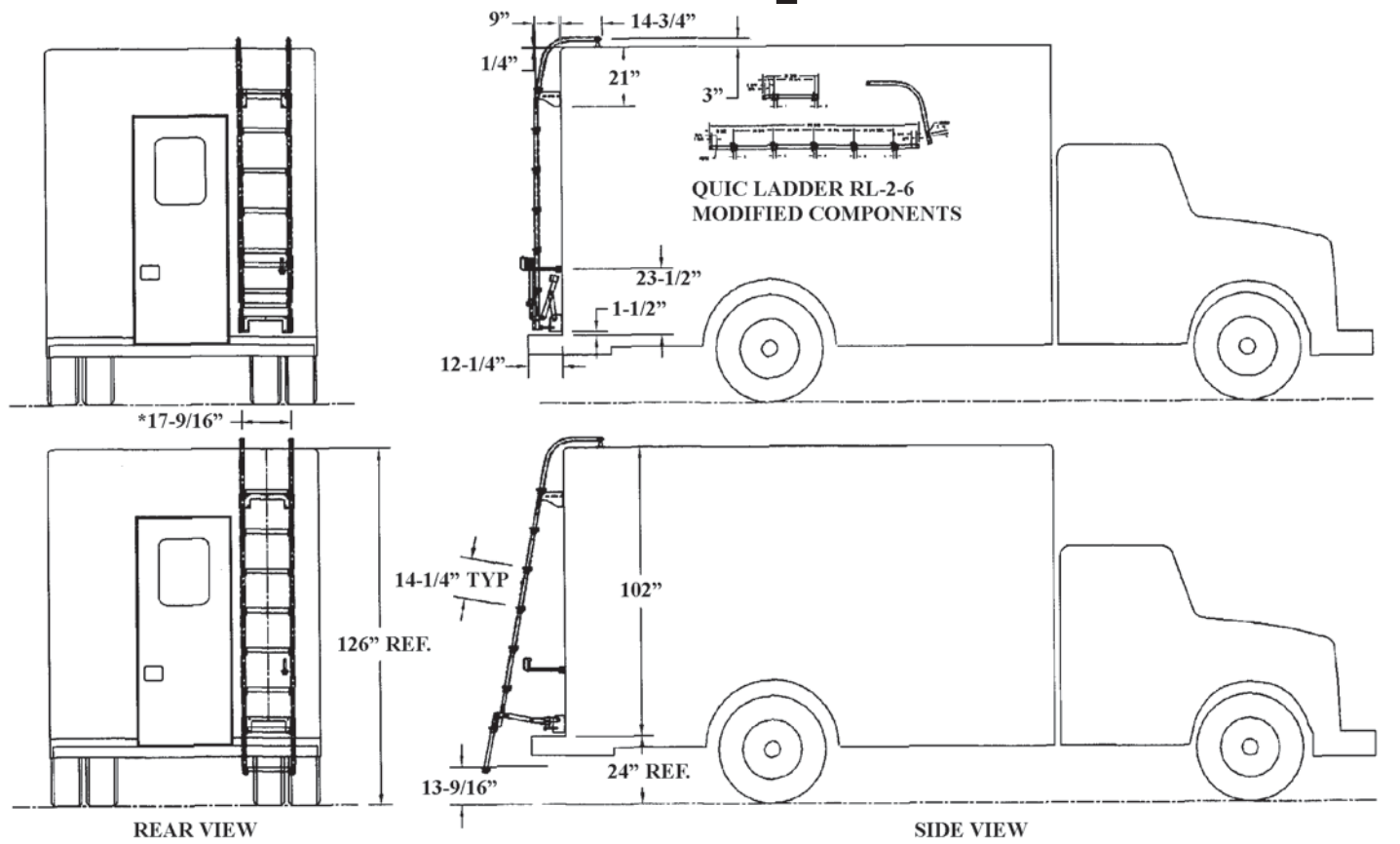
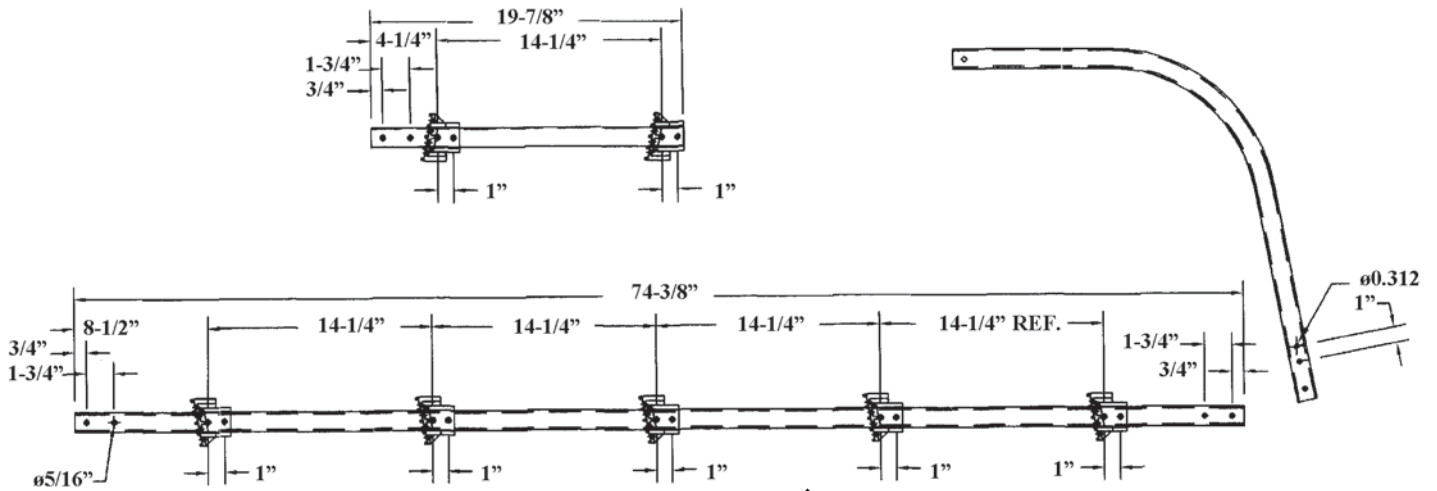
SYM	DESCRIPTION	DIM. (INCHES)
A	Ground to top of truck	_____
B	Top of truck to bottom of lower bracket (available mounting space above bumper)	_____
C	Back of truck to rear of bumper	_____



**\*All dimensions shown are for the standard RL-x-x**

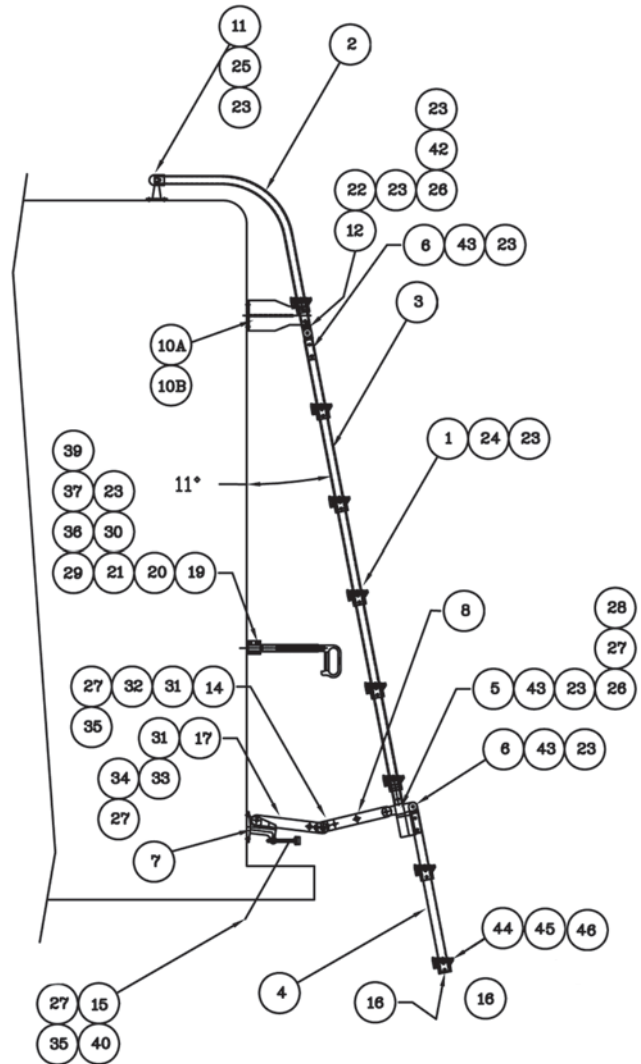
**Drawings From Ziamatic**

Upon receipt of the customer's dimensions, Ziamatic will provide drawings of the proposed ladder configuration. Customer then places an order and the ladder is custom built to the specifications as shown below.



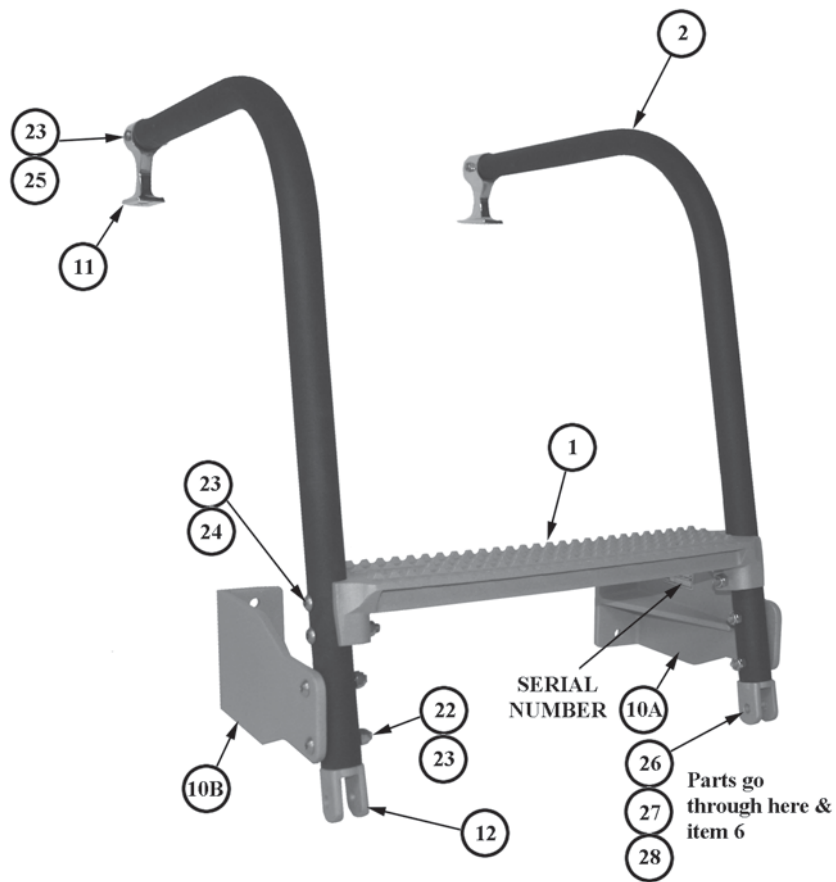
**\*Dimensions shown are for the standard RL-x-x**

ITEM NO.	PART NO.	DESCRIPTION	QTY.
1	3096-005-101	Ladder Rung - Standard	A/R
	3096-200-101	Ladder Rung - 12" Ladder	
	3096-300-101	Ladder Rung - 15" ladder	
2	3096-005-103	Fixed Rail	2
3	3096-005-105	Main Rail	2
4	3096-005-107	Folding Rail	2
5	3096-005-109	Lower Joint A	2
6	3096-005-111	Clevis Joint, Male	4
7	3096-055-112	Lower Hinge Bracket	2
8	3096-055-118	Scissor Lock Link, Outbd. (Std. Length)	2
9	3096-055-142	Scissor Lock Link, Outbd. (Short)	
10A	3096-055-136	Upper Bracket, RH (Facing Ladder)	1
10B	3096-055-138	Upper Bracket, LH (Facing Ladder)	1
11	3096-005-121	End Post	2
12	3096-005-123	Clevis Joint, Female	2
13	X	X	X
14	3096-005-133	Scissor Connector Rod, Std. Ladder	1
	3096-200-133	Scissor Connector Rod, 12" Ladder	
	3096-300-133	Scissor Connector Rod, 15" Ladder	
15	3096-005-125	Bumper, 1" Dia., 3/8-16 Thread	2
16	3096-005-127	Tube Plug	2
17	3096-055-116	Scissor Lock Link, Inbd. (Std. Length)	2
18	3096-055-140	Scissor Lock Link, Inbd. (Short)	
19	3097-105-126	Support, Retainer Handle	1
20	3097-105-109	Handle	1
21	3097-145-125	Housing, Long	1
22	9110-503132	Screw, Button Hd. Sckt Cap, 5/16-18 x 2" Lg. SS	4
23	9113-103100	Nut, Hex., Nylock, 5/16-18 SS	54
24	9110-503136	Screw, Button Hd., 5/16-18 x 2 1/4" Lg. SS	32
25	9110-503128	Screw, Button Hd., 5/16-18 x 1 3/4" Lg. SS	2
26	9180-003727	Pin, Clevis, 3/8 x 1 11/16" (1 15/32 Grip)	6
27	9114-113700	Flatwasher, 3/8ø NOM. SS	14
28	9070-001212	Cotter Pin, 1/8ø x 3/4 Lg. SS	6
29	3097-105-118	Setscrew, Hollowlock, 7/8-14 x 7/16 Sckt, SZP	1
30	3097-105-113	Spring, Compression	1
31	3096-005-135	Sleeve, .385 ID x 5/8 OD x 7/16 Lg.	4
32	9110-103728	Scissor Pivot Screw, 3/8-16 x 1 3/4 Hex Hd., SS	2
33	9180-003732	Pin, Clevis 3/8ø x 2" SS	2
34	9113-173700	Nut, 3/8-16 Hex, Nylock, SS	2
35	9114-203700	Lockwasher, 3/8ø NOM. SS	4
36	9010-3350104	Screw, Socket Head Cap, 1/2-13 x 6 1/2	1
37	9010-333132	Screw, Socket Head Cap 5/16-18 x 2, SZP	2
38	X	X	X
39	3097-105-160	Wear Straip, Retainer Handle	1
40	9112-203700	Nut, Hex, 3/8-16 Jam, SS	2
41	9110-313720	Screw, Shoulder, SS 3/8ø x 1 1/4	2
42	9114-113100	Flatwasher, 5/16ø NOM.	2
43	9110-503124	Screw, Button Sckt Cap, 5/16-18 x 1 1/2	8
44	3096-005-102	Bottom Rung, Standard Ladder	1
	3096-200-102	Bottom Rung, 12" Ladder	
	3096-300-102	Bottom Rung, 15" Ladder	
45	1045-275-113	Bumper, Rubber	2
46	9025-221910	Screw, 10-24 x 5/8 Phil Hd, Thread Forming	2

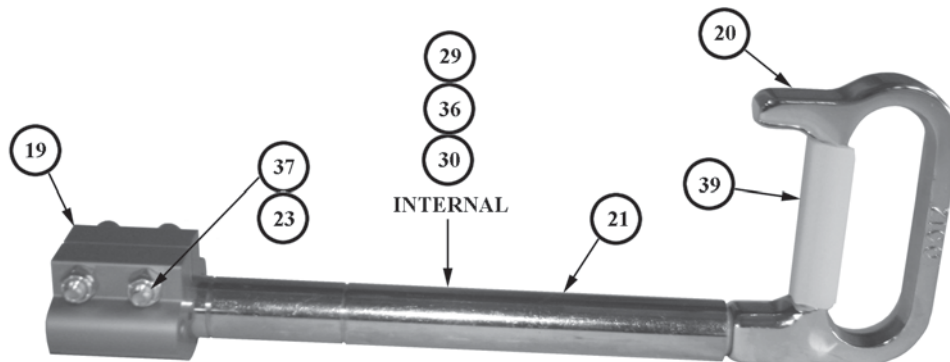


## PARTS LISTING AND ITEM NUMBER REFERENCES

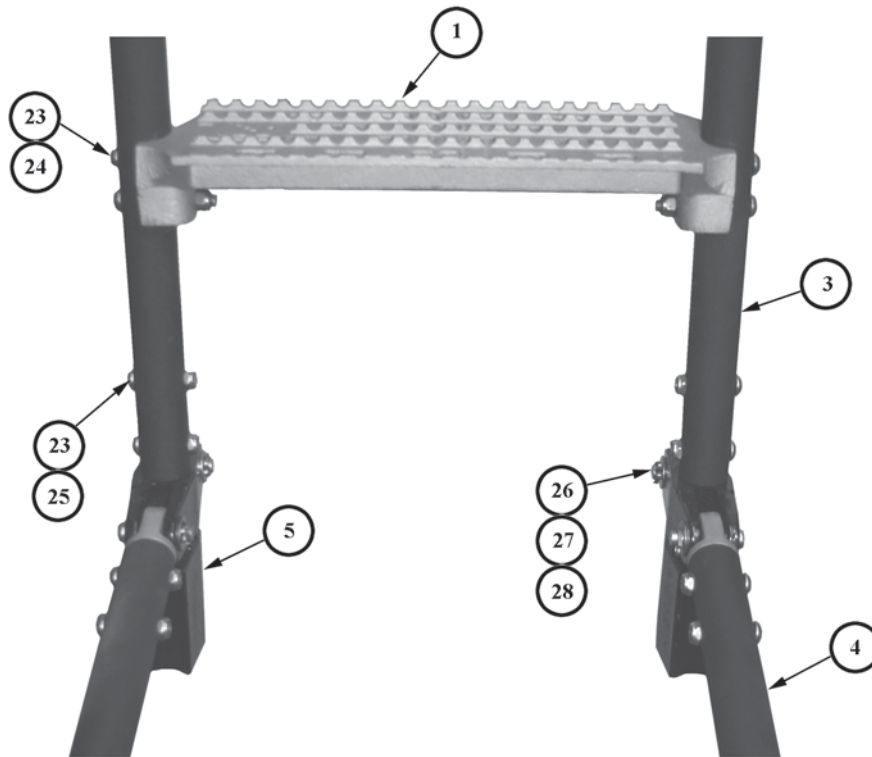
**Photos on following pages will  
reference above item numbers.**



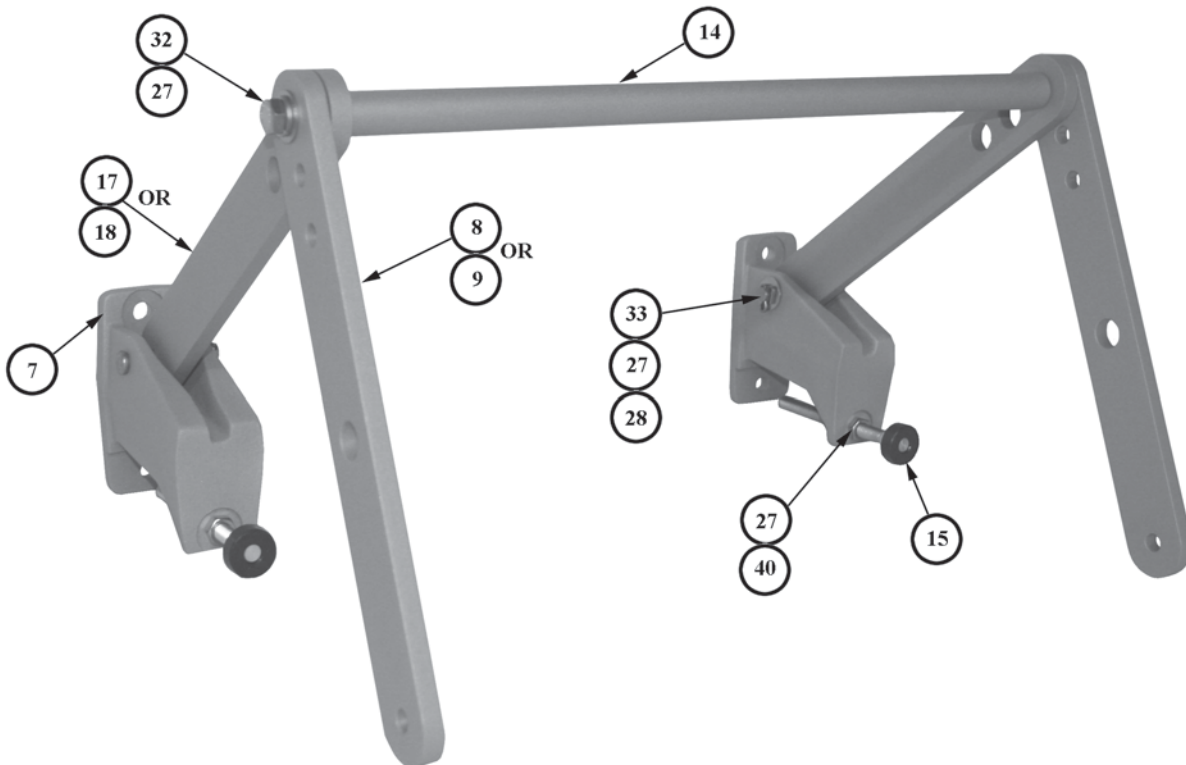
**PHOTO 1: UPPER BRACKET AND FIXED RAILS**



**PHOTO 2: HANDLE ASSEMBLY**

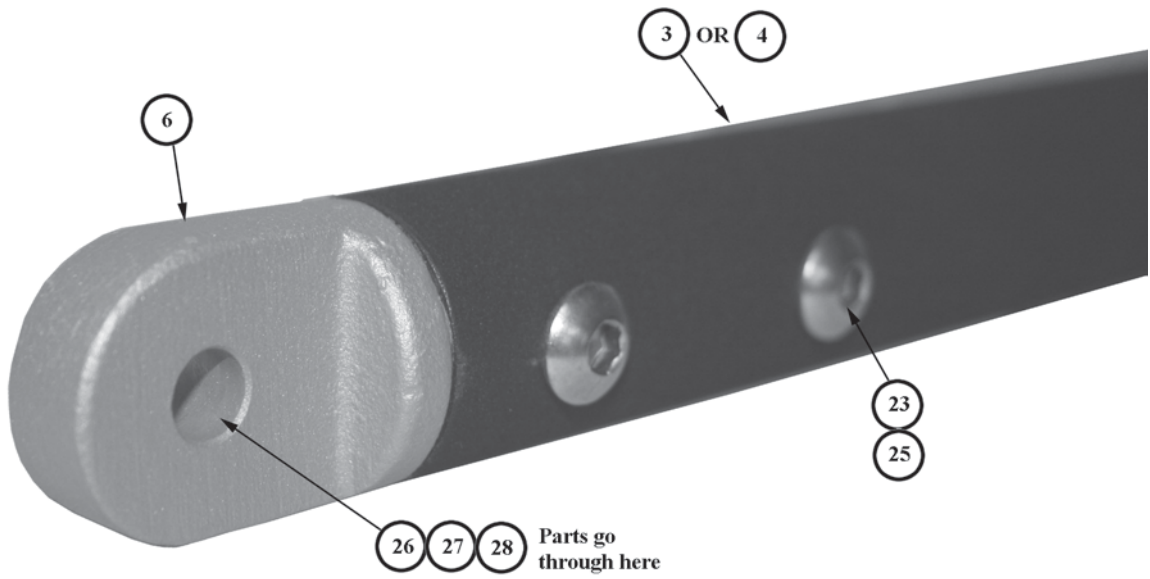


**PHOTO 3: FOLDING RAIL (FOREGROUND) ATTACHED TO MAIN RAIL**

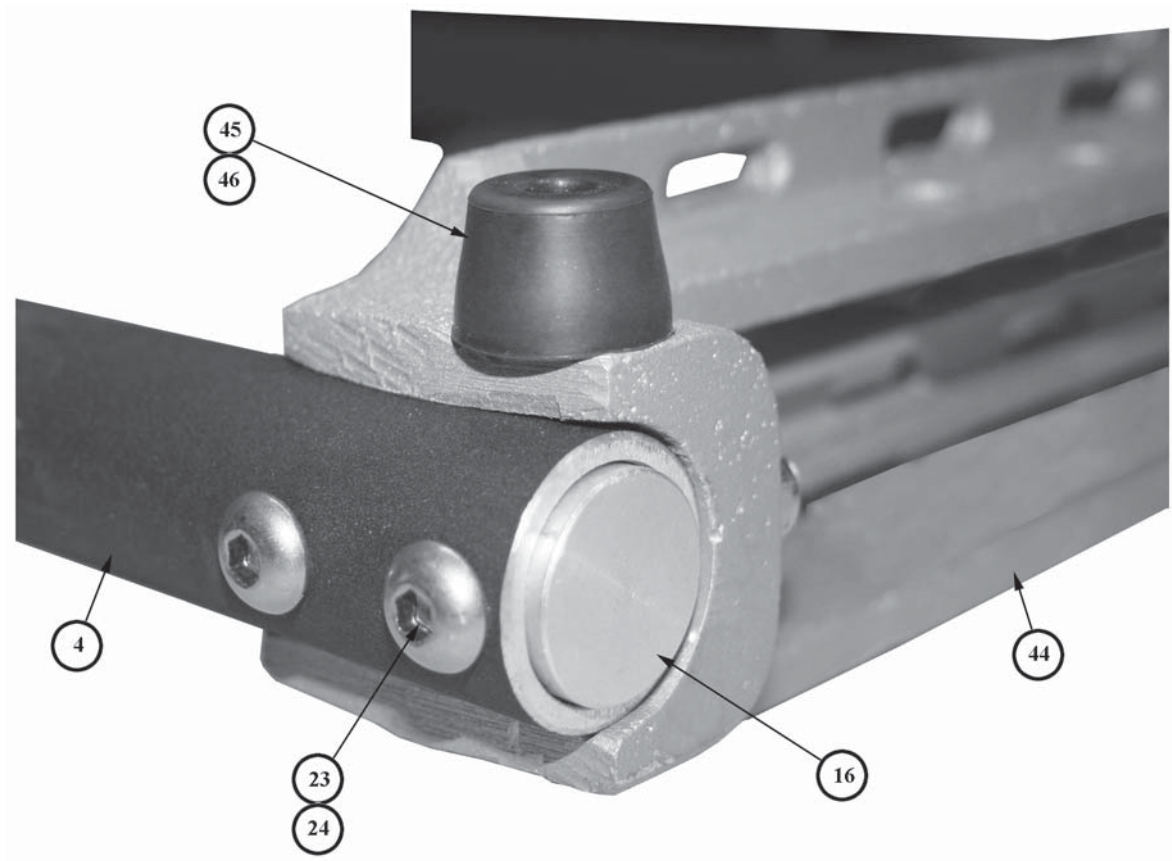


**PHOTO 4: LOWER HINGE BRACKET ASSEMBLY**





**PHOTO 5: CLEVIS JOINT, MALE IN END OF FOLDING RAIL**



**PHOTO 6: TUBE PLUG IN END OF FOLDING RAIL**

**Serial Number** \_\_\_\_\_

Please record the serial number for your system here. The serial number may be found on the Upper Bracket (Photo 1, page 5).

We will require the serial number when you call with any questions pertaining to your ladder system or whenever you are ordering parts.

You may also want to keep a set of the drawings, for your system, with this booklet as shown on page 3.

### **Recommended Installation Instructions**

1. Before beginning installation, confirm truck dimensions match provided Zico installation drawing. A template is provided for the installation of the mounting brackets. It is suggested in cases where the Quic Ladder is to be installed on thin sheet metal that an additional metal plate should be mounted on opposite side of sheet metal at bracket mounting points to ensure structural integrity of ladder-to-truck attachment.
2. Attach Upper Brackets (10, photo 1, page 5) and Fixed Rails (2, Photo 1, page 5) Assembly and Lower Hinge Brackets (7, Photo 4, page 6) Assembly to Main Ladder (3, Photo 3, page 6) Assembly using the hardware provided.
3. Hang assembled Quic Ladder (in stored position) in desired location on truck.
4. Drill holes to attach End Posts (11, Photo 1, page 5) to the Fixed Rails (2), if not already done.
5. Assemble to top of truck. In cases where Fixed Rails (2) are not included in order, attach only the Upper Bracket (10) to the truck in this step.
6. Drill holes for Upper Brackets (if not already completed) and Lower Hinge Brackets after locating the proper placement for the brackets. For the locking linkage to function properly the lower hinge brackets must be parallel to one another. The Lower Hinge Brackets should be mounted onto truck so that when the Folding Rail (4, Photo 3, page 6) is in the stored position, the center linkage hole between the Scissor Lock Link Out (8, Photo 4, page 6) and the Scissor Lock Link In (17, Photo 4, page 6) should be about halfway between the Main Ladder and the truck wall. Attach Upper Bracket and Lower Hinge Bracket to the truck.
7. Find proper placement on the truck for the Handle Assembly (Photo 2, page 5) to ensure support for the Ladder Rung of the Folding Rail in the stored position. Drill holes and attach Handle Assembly to truck.



**Ziamatic Corp.**

10 West College Avenue, P.O. Box 337, Yardley, PA 19067-0587 • (215) 493-3618 • FAX: (215) 493-1401

[www.ziamatic.com](http://www.ziamatic.com)

TOLL FREE: 800-711-3473

\*ZICO is a registered trademark for fire, safety and marine products made by Ziamatic Corp.

Copyright Ziamatic Corp. 5-06