

# **Zico**

Ziamatic Corp



## Quic-Lock Manual

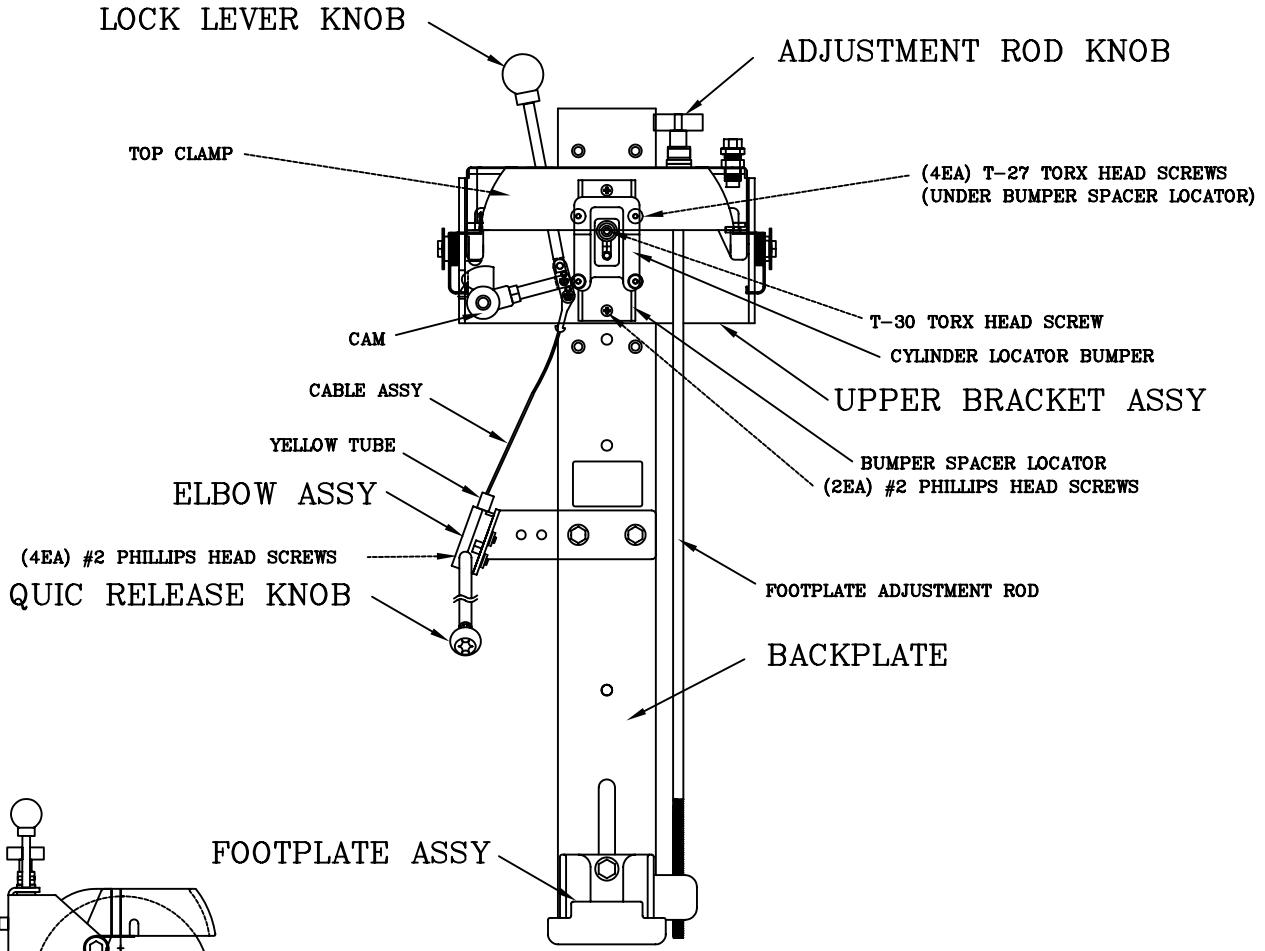
Tel: 1-800-711-FIRE  
[www.ziamatic.com](http://www.ziamatic.com)

## **Quic-Lock Set-up Instructions**

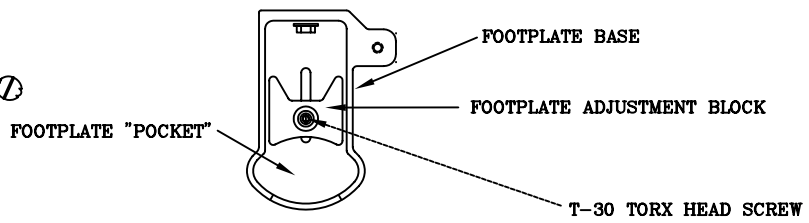
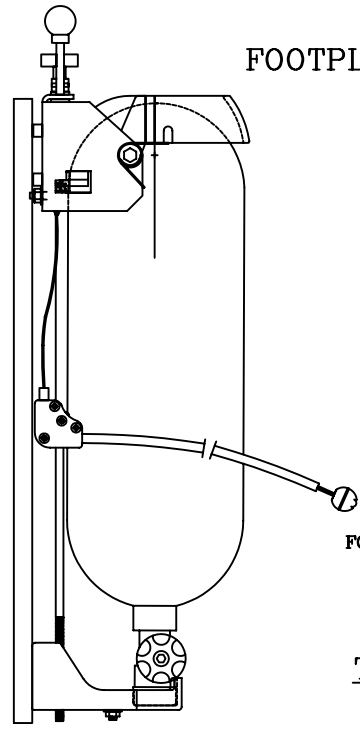
1. Loosen the T-30 torx head screw holding the Footplate Adjustment Block to the Footplate just enough so that the Adjustment Block can slide back and forth on the Footplate. If you are using a MSA bottle the Adjust Block will need to be rotated 180°.
2. Place the bottom of your SCBA Air Cylinder Valve in the Footplate Assembly. While keeping the Air Cylinder Valve Assembly as far forward as it will go in the Footplate “pocket”, slide the Adjustment Block so there is approximately 3/8” clearance between the Adjustment Block and the bottom of the Air Cylinder Valve.
3. Remove the SCBA Air Cylinder from the Footplate and re-tighten the T-30 torx head screw holding the Footplate Adjustment Block.
4. Locate your specific SCBA combination (Brand, Model, Air Cylinder size and Type) on the Quic-Lock SCBA Fit Chart which starts on page 7. If your SCBA combination is not on the chart please call Ziamatic Corp. at 1-800-711-FIRE for this information.
5. Using the information found in the Quic-Lock SCBA Fit Chart (pg. 9 through 12) and the set-up drawing (pg. 4) determine where the Upper Bracket Assembly should be located. The QLM-U is shipped in Position B. If this is the correct position for your SCBA skip to step 9.
6. If you need to move the Upper Bracket Assembly to Position A or C, loosen the T-30 torx head screw on the Cylinder Locator Bumper and slide the Cylinder Locator Bumper to a position that gives access to both #2 phillips head screws on the Bumper Spacer Locator. (See figure 1, pg. 5) Remove the two screws, and set the Bumper Spacer Locator & Cylinder Locator Bumper aside. (See figure 2 & 3, pg 5)
7. Remove the (4) T-27 torx head screws that are holding the Upper Bracket Assembly in place.
8. Turn the Adjustment Rod Knob to allow the Upper Bracket Assembly to line up to the desired mounting location (Position A or C). Be careful not to bend the Adjustment Rod.
9. If you are moving the Upper Bracket Assembly to Position A, loosen (4) #2 phillips head screws on the Elbow Assembly and slide the Yellow Tube up 2 inches further past the Elbow Assembly. Re-tighten the (4) #2 phillips head screws on the Elbow Assembly after the Yellow Tube has been repositioned. (See figure 4, pg 5)

## **Quic-Lock Set-up Instructions (Continued)**

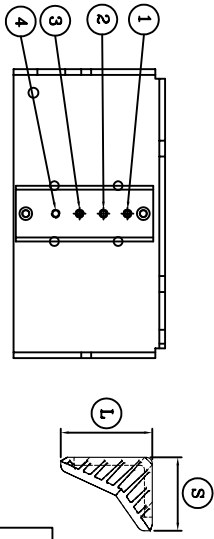
10. Re-attach the Upper Bracket Assembly in the new position using the (4) T-27 torx screws.
11. Re-attach the Bumper Spacer Locator to the Upper Bracket Assembly with the (2) #2 phillips head screws you removed earlier.
12. Snug-up the T-30 torx head screw holding the Cylinder Locator Bumper but leave it loose enough to allow the Cylinder Locator Bumper to slide up and down on the Bumper Spacer Locator.  
Make sure the Cam Release knob is in the “Down” Position.
13. Place the SCBA Air Cylinder Valve in the Footplate and hold the SCBA upright while pulling down the Top Clamp onto the top of the air cylinder.
14. Adjust the Footplate height using the Adjustment Rod Knob until there is approximately a 1/4” gap between the top of the Air Cylinder and the top of the Top Clamp.
15. Slide the Cylinder Locator Bumper up or down until it touches the Air Cylinder and keeps it held firmly toward the front of the Top Clamp. Remove the Air Cylinder and tighten the T-30 torx head screw on the Cylinder Locator Bumper.
16. If the Air Cylinder can’t be held firmly against the front of the Top Clamp by the Cylinder Locator Bumper, it may be necessary to change the location of the T-30 torx head screw holding the Cylinder Locator Bumper to one of the different positions (1, 2, or 3) in order to get the correct fit described in steps 11 and 12. (A little experimentation may be necessary.)
17. Place the SCBA into the bracket and pull the Lock Lever Knob “Up” firmly to lock the SCBA in place. The SCBA should be held firmly in place. If it is not, repeat steps 9-11 and fine-tune until you get a satisfactory final adjustment.



FRONT VIEW OF QLM-U



TOP VIEW OF QLM-U FOOTPLATE ASSY



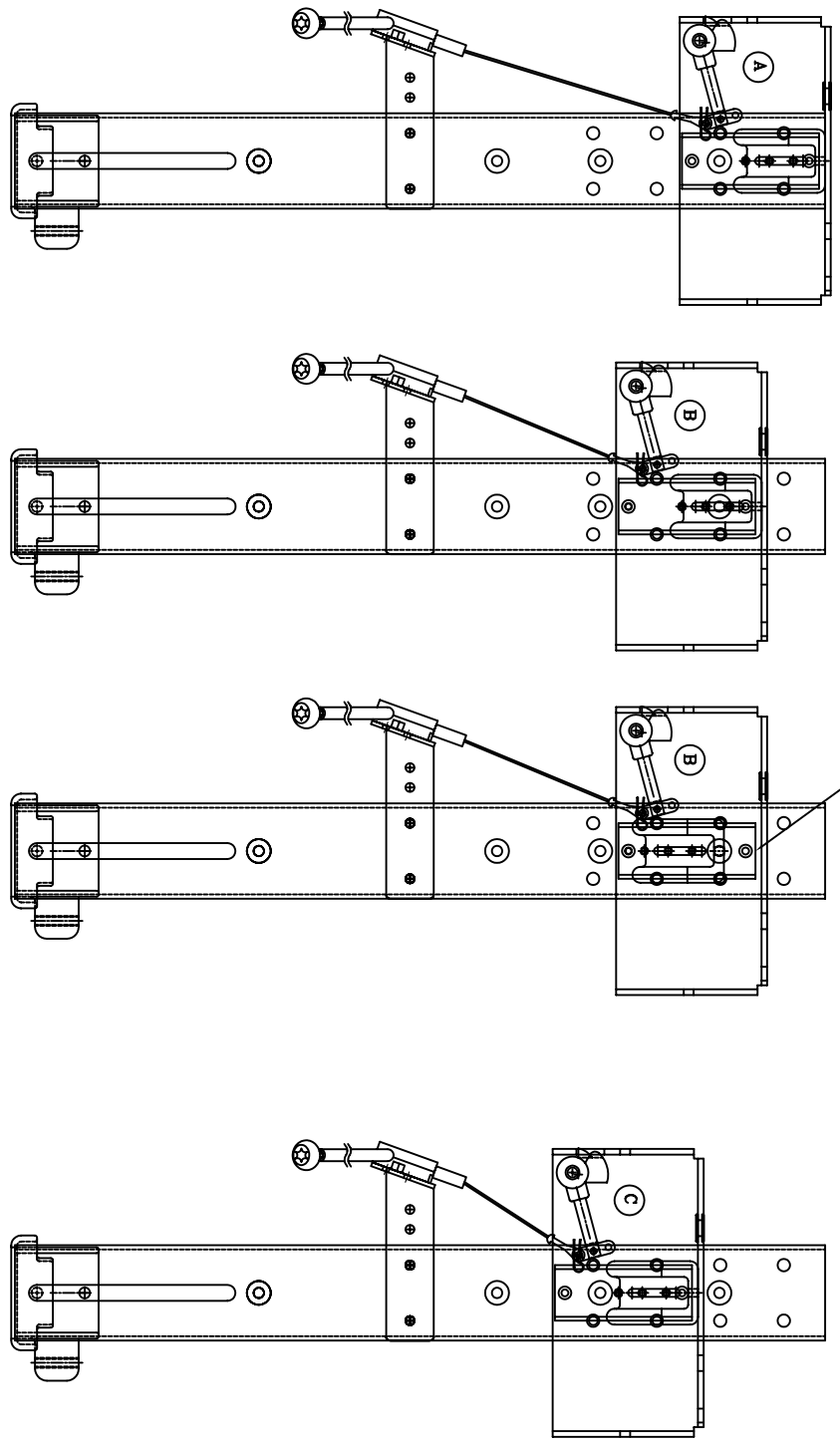
Bottle Length  
22.625 MIN  
25.250 MAX

Bottle Length  
18.750 MIN  
23.250 MAX

Bottle Length  
18.750 MIN  
23.250 MAX

Bottle Length  
18.750 MIN  
21.250 MAX

IN CASE SMALL DIAMETER BOTTLE DOES NOT REACH BUMPER, TURN SPACER BLOCK 180 DEG.



- 1) BOTTLE SHOULD BE FITTED TO BRACKET AS PER INSTRUCTION.
- 2) BACK PLATE MOUNT TO SEAT SO FOOT PLATE IS LEVEL OR CLOSE AS POSSIBLE TO TOP OF SEAT CUSHION.

Figure 1

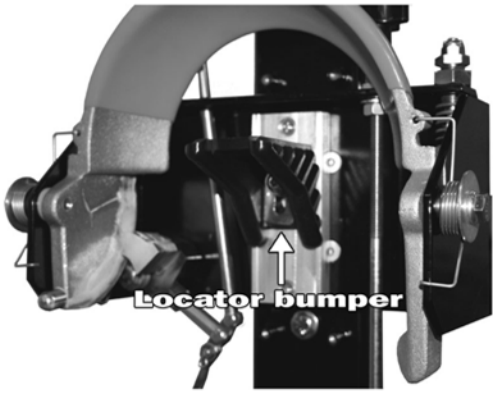


Figure 2



Figure 3

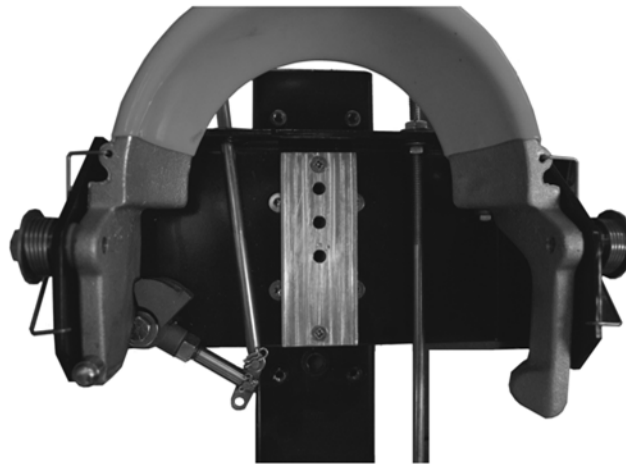
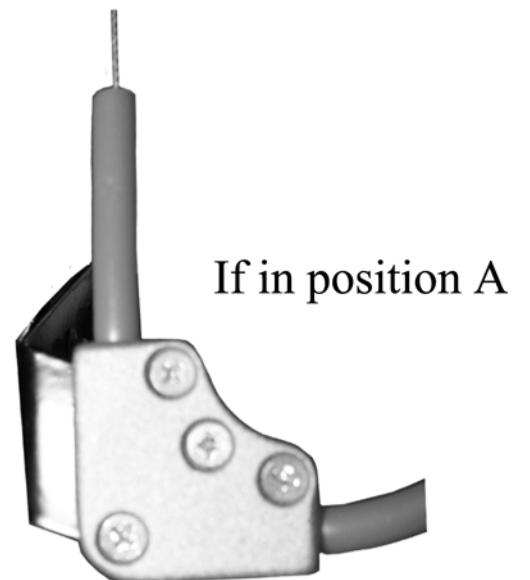
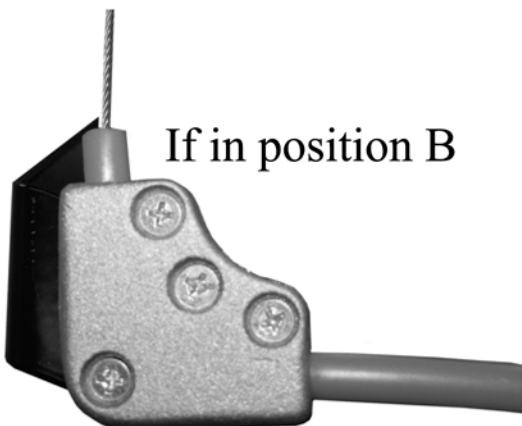
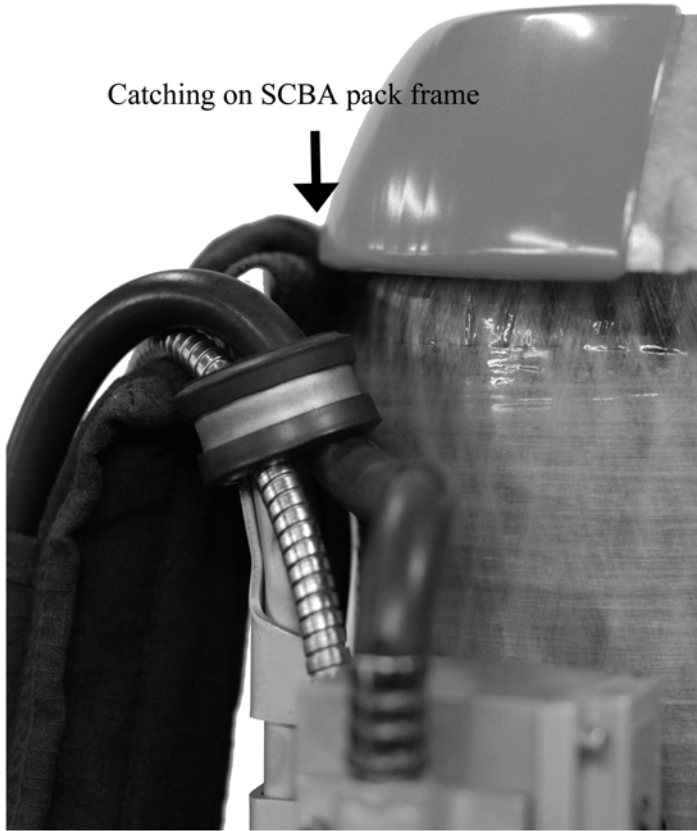


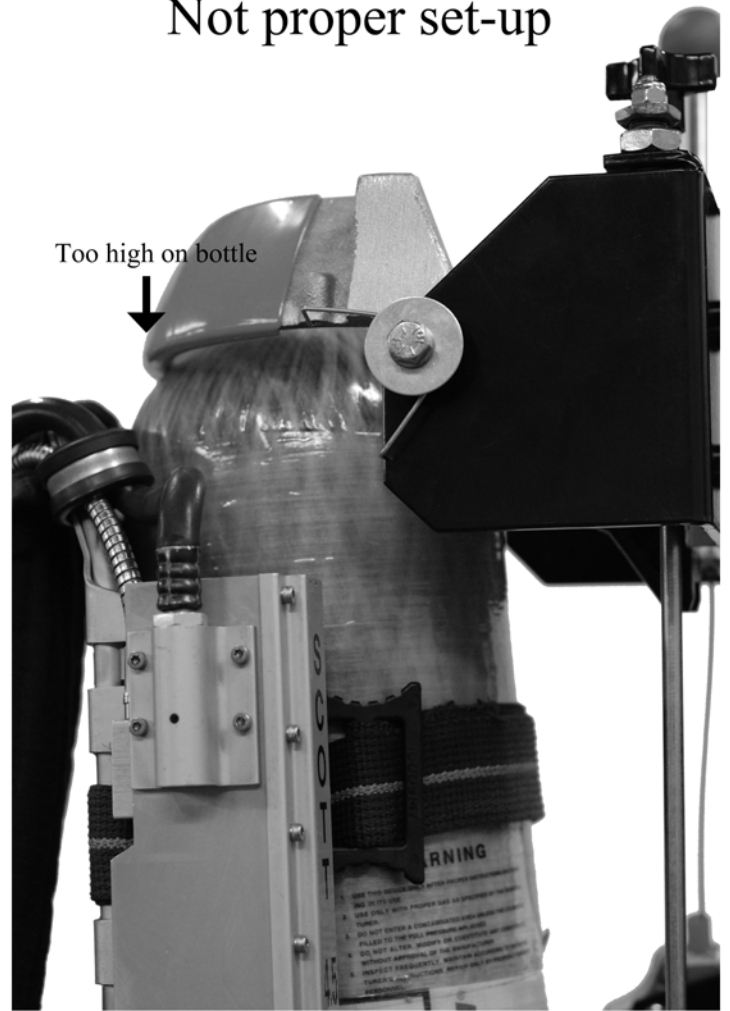
Figure 4



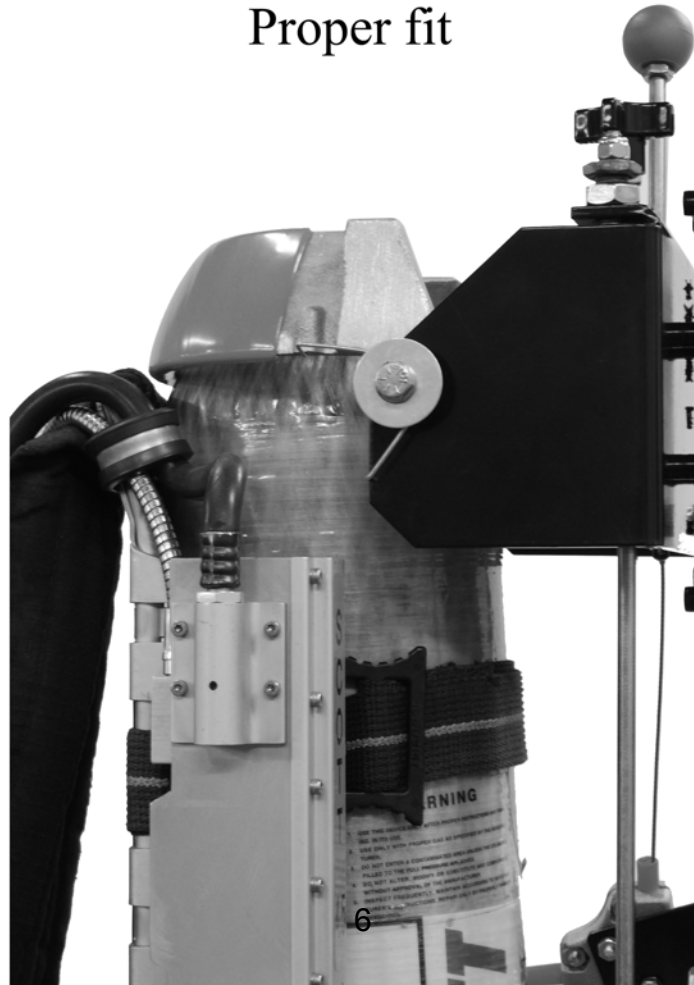
Not proper set-up



Not proper set-up



Proper fit

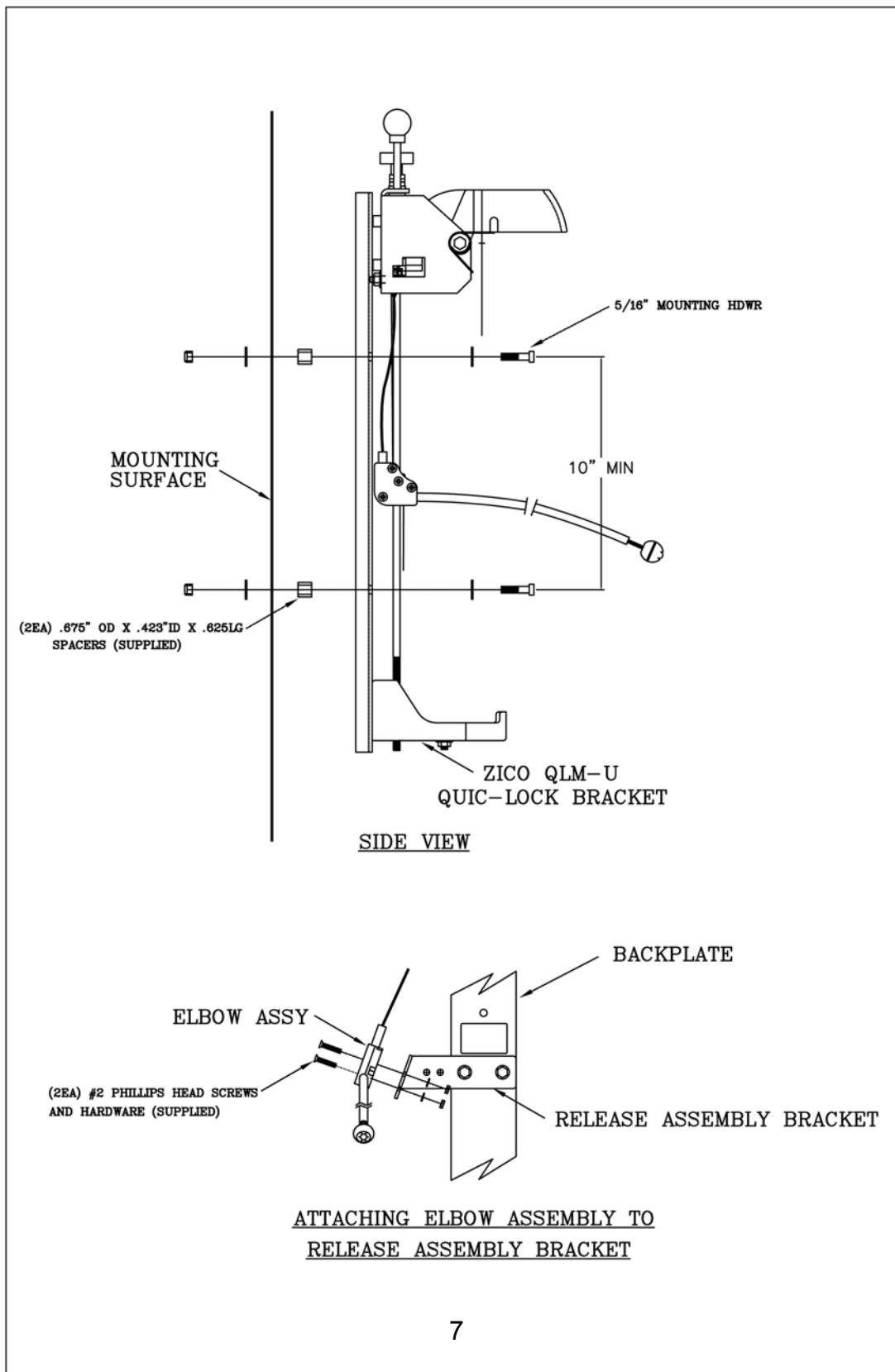


## Minimum Mounting Requirements for Quic-Lock

Minimum of (2) mounting points at least 10" apart using 5/16" O.D. screws.

Spacer required between Quic-Lock Backplate and mounting surface. (provided)

Mounting surface must be able to withstand a pull-out force of 450 lbs.





Quic-Lock SCBA Setup Chart

SCBA Type	Tank Dia	Tank Type	Upper Bracket Location	Bumper Location	Bumper Position
			A, B, C	1,2,3	S, L
<b>Drager</b>					
Drager PSS 100	Air Boss Evolution Plus 30 Min 4500 PSI	5-5/16"D X 23" Carleton	B	2	L
Drager PSS 100	Air Boss Evolution Plus 45 Min 4500 PSI	6.5" D X 22" Carleton	B	2	S
Drager PSS 100	Air Boss Evolution Plus 60 Min 4500 PSI	6.8" D X 25" Carleton	B	2	S
<b>GLOBAL</b>					
Drager	Air Boss Evolution 30 Min 4500 PSI	5-5/16"D X 23" Carleton	B	3	L
Drager	Air Boss Evolution 45 Min 4500 PSI	6.5" D X 22" Carleton	B	2	S
Drager	Air Boss Evolution 60 Min 4500 PSI	6.8" D X 25" Carleton	A, B, C	1	S
<b>GLOBAL</b>					
Global Safety Pioneer	30 Min 4500 PSI	5.3"D X 23" Carleton	B	3	L
<b>GLOBAL (Cont)</b>					
Global Safety Pioneer	45 Min 4500 PSI	6.5" D X 21" Carleton	B	2	S
Global Safety Pioneer	60 Min 4500 PSI	6.9" D X 24-3/4" Carleton	A	2	S
<b>ISI</b>					

Quick-Lock SCBA Setup Chart

ISI	Viking DXL	30 Min 4500 PSI	5.4" D X	23-1/4" Carton	A	3	L
ISI	Viking DXL	45 Min 4500 PSI	6.4" D X	23" Carton	B	2	S
ISI	Viking DXL	60Min 4500 PSI	6-7/8" D X	24-3/4" Carton	A	2	S
<b>MSA</b>							
MSA Firehawk		30Min 4500 PSI	5.4" D X	21-1/2" Luxfer	B	2	L
MSA Firehawk		30Min 3000 PSI	6.75" D X	22-1/2" Luxfer	B	2	L
MSA Firehawk		45 Min 4500 PSI	6.8"D X	21-1/4" Luxfer	B	2	S
	<b>SCBA Type</b>	<b>Tank Dia</b>	<b>Tank Type</b>	<b>Upper Bracket Location</b>	<b>Bumper Location</b>	<b>Bumper Position</b>	
				<b>A, B, C</b>	<b>1,2,3</b>	<b>S, L</b>	
<b>MSA (Con't)</b>							
MSA Firehawk		45 Min 4500 PSI Low Profile	6.3" X 1/4" Luxfer	23-1/4" D 7.1" D X	A	2	S
MSA Firehawk		60Min 4500 PSI	24" Luxfer	5.4" D X	A	2	S
MSA Stealth		30Min 4500 PSI	21-1/2" Luxfer	6.75" D X	B	2	L
MSA Stealth		30Min 2216 PSI	22-1/4" Luxfer	6.75" D X	B	2	S
MSA Stealth		30Min 3000 PSI	22-1/2" Luxfer	6.75" D X	A	2	S

Quick-Lock SCBA Setup Chart

MSA Stealth	45 Min 4500 PSI	6.8"D X 21-1/4" Luxfer	C	2	S
MSA Stealth	60Min 4500 PSI	7.1" D X 24" Luxfer	A	2	S
<b>Scott</b>					
Scott AP-50	30Min 4500 PSI	5.4" D X 21-1/2" Luxfer	B	3	L
Scott AP-50	30Min 2216 PSI	6-9/16"D X 23-1/2" Luxfer	A	2	S
<b>Scott (Con't)</b>					
Scott AP-50	45Min 4500 PSI	6.2" D X 23-1/2" SCI	A	2	S
Scott AP-50	60Min 4500 PSI	6-7/8"D X 24-3/4" Luxfer	A	2	S
Scott NXG2	30Min 4500 PSI	5.4" D X 21-1/2" Luxfer	B	3	L
Scott NXG2	30Min 2216 PSI	6-9/16"D X 23-1/2" Luxfer	A	2	S
Scott NXG2	45Min 4500 PSI	6.2" D X 23-1/2" SCI	A	3	S
Scott NXG2	Carbon 60Min 4500 PSI	6-7/8"D X 24-3/4" Luxfer	A	2	S

Quick-Lock SCBA Setup Chart

Scott NXG2	Kevlar 60Min 4500 PSI	7-1/8"D X 25-1/4" Luxfer	A	1	S
<b>Survivair</b>					
Survivair Panther	30Min 4500 PSI	5.4" D X 21-3/4" Luxfer	B	2	L
<b>Survivair (Cont')</b>					
	<b>Tank Dia</b>	<b>Tank Type</b>	<b>Upper Bracket Location A, B, C</b>	<b>Bumper Location 1,2,3</b>	<b>Bumper Position S, L</b>
Survivair Panther	45Min 4500 PSI	6.25" D X 23" Luxfer	A	2	S
Survivair Panther	45Min 4500 PSI	6.75" D X 20-3/4" Luxfer	C	2	L
Survivair Panther	60Min 4500 PSI	6.85" D X 24-1/2" Luxfer	A	2	S
Survivair Warrior	30Min 4500 PSI	5.4" D X 21-3/4" Luxfer	A	3	S
Survivair Warrior	45Min 4500 PSI	6.25" D X 23" Luxfer	A	2	S
Survivair Warrior	45Min 4500 PSI	6.75" D X 20-3/4" Luxfer	B	3	L
Survivair Warrior	60Min 4500 PSI	6.85" D X 24-1/2" Luxfer	B	2	L