

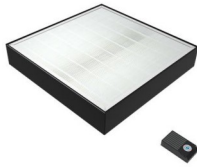
CrewProtect Series

CREWPROTECT CARTRIDGE

CC-305

RFID CARTRIDGE

\$250.00 List Price



FEATURES

CrewProtect™ filters are a compact filtering solution with several embedded layers, capable of reacting with different types of contaminants, primarily particulates, volatile organic compounds (VOCs) and bioburden such as viruses, bacteria and mold (including SARS-CoV-2, the virus that causes COVID-19). The lifetime of the filter is 6 months of intermittent usage or 1,800 hours of cumulative filtration. Since the technology inactivates viruses and volatile organic compounds, the filters are safe to dispose on normal refuse.

SPECIFICATIONS

Weight 1.8

Pre-filter,

Media Molecular,
Puraward, HEPA

DOCUMENTS

Online Videos

[CREWPROTECT PRODUCT DEMONSTRATION: REDUCE THE AIRBORNE COVID AND CANCER-CAUSING THREATS IN YOUR FIRE APPARATUS CAB \(MP4\)](#)

[TFT CREWPROTECT MULTI-THREAT AIR FILTRATION \(MP4\)](#)

[TFT-CANCER IN THE FIRE SERVICE \(MP4\)](#)

Technical Specifications and Drawings

[CC-305 ITEM SPECIFICATION \(DOC\)](#)

ABOUT THE CREWPROTECT SERIES

A crewprotect 20 and crewprotect 100 unit sit side by side in scale



WHAT IS CREWPROTECT?

You and your crew are exposed to harmful airborne contaminants even after leaving a call. Your firefighting gear carries contaminants that can release in the cab via a process called off-gassing. CrewProtect protects you, your firefighting crew, and your extended first responder crew from the air contamination and airborne threats that you face each day.

CrewProtect addresses three significant air contamination concerns for firefighters: particulates, volatile organic compounds (VOCs), and aerosols that carry bacteria and viruses. This includes SARS-CoV-2, the virus that causes COVID-19. The CrewProtect system is a comprehensive solution that protects your crew from multiple carcinogenic contaminants that other air filtration systems miss. Plus, CrewProtect is safe! Some competing products are ineffective at removing particulates and VOCs and may unintentionally add more harmful elements, such as ozone and formaldehyde, to the environment.

[CrewProtect product demonstration video](#)



[\[Watch a CrewProtect Product Demonstration\]](#)

CrewProtect Options

- CrewProtect 100 mounts on the ceiling, doghouse, or wall of your larger firefighting apparatus and runs at 100 CFM (Cubic Feet per Minute).
- CrewProtect 20 installs in your smaller vehicles such as the Chief's vehicle, tiller cab, or wildland truck. This unit runs at 20 CFM.

HOW DOES CREWPROTECT WORK?

- **Mounts** inside your apparatus
- **Connects** to the truck's power
- **Runs** automatically when the apparatus is in use
- **Removes** particulates, VOCs, and aerosols carrying harmful viruses and bacteria

MULTI-STAGE CARTRIDGE SYSTEM

[Multi-Stage-Filtration-\(2\).png](#)



1. **Preliminary**: collects 3.0-10.0 micron particulate sizes
2. **Molecular**: reduces gaseous pollutants via chemisorption
3. **Antimicrobial**: reduces airborne viruses, bacteria, and mold
4. **HEPA**: collects particulates down to 0.3 micron

□

CREWPROTECT IS DESIGNED FOR YOUR FIRE & EMS CREWS

The CrewProtect unit is made of steel and powder coated to withstand environments inside emergency vehicles. Each unit is compact, rugged, and includes a three-year limited warranty. The PuraShield system by [Purafil](#) is a patented technology and the only fire apparatus and ambulance product that reduces particulates, VOCs, and aerosols using a single unit.

You can easily install CrewProtect in an existing apparatus at an apparatus service shop. You can also specify installation on a new apparatus through your chosen OEM or apparatus dealer.

[CrewProtect FAQ](#)

□

[Request Your Product Demonstration](#)