



Capacitive Sensors Series 95 - AC / DC

Housing \varnothing 32 mm

- Housing material: POM
- Sensing distance 2...25 mm adjustable
- Normally open and normally closed function
- Potential-free change-over contact
- Switch-on and switch-off delay changeable
- Adjustable timer 1 sec - 10 min.

Certificate:



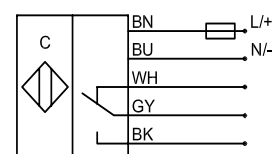
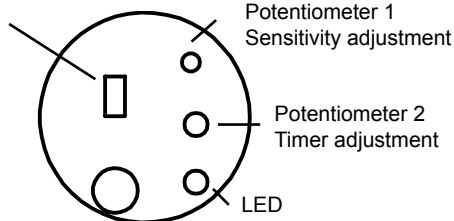
Technical data

Non-flush mountable

| | |
|-------------------------------------------|------------------------------------|
| Operating distance S_n | 20 mm |
| Operating distance min. / max. adjustable | 2...25 mm |
| Electrical version | 5-wire AC / DC |
| Output | Relay, 1 CO |
| Type | KAS-95-32-1CO-K-POM-TD |
| Art.-No. | KA 0761 |
| Operating voltage (U_b) | 20...250 AC / DC |
| Load max. AC (I, U) | 1 A, 250 V |
| Load max. DC (I, U, P) | 1 A, 220 V, 60 W |
| No-load current (I_o) | 2.1 mA |
| Frequency of operating cycles max. | 2 Hz |
| Permitted ambient temperature | -25...+70 °C |
| LED-display | Yellow |
| Protective circuit | Built-in |
| Degree of protection IEC 60529 | IP 67* |
| Norm | EN 60947-5-2 |
| Connection cable | 2 m, PVC, 5 x 0.34 mm ² |
| Housing material | POM |
| Active surface | POM |
| Lid | PBT |

*With sealed potentiometer

Change-over switch
Switch-on / Switch-off
delay



All specifications are subject to change without notice. (15.11.2012)

Made in Germany