



Capacitive Sensors Series 90 - AC/DC

Housing Ø 64 mm

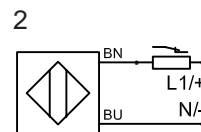
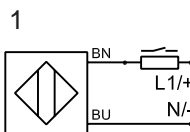
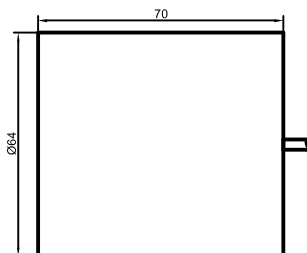
- Housing material: PA
- Non-flush mountable
- Sensing distance 3...50 mm adjustable

Certificate



Technical data

Operating distance S_n [mm], flush mounting	35, no	35, no
Operating distance min./max. [mm] adjustable	3...50	3...50
Electrical version	2-wire AC/DC	2-wire AC/DC
Output	NO	NC
Type	KAS-90-61-S	KAS-90-61-Ö
Art.-No.	905 200	905 300
Connection diagram No.	1	2
Operating voltage (U_b)	20...250 V AC/DC	20...250 V AC/DC
Output current max. (I_o)	330 mA	330 mA
Load current min.	5 mA	5 mA
Voltage drop max. (U_d)	≤ 6 V	≤ 6 V
Permitted residual ripple max.	-	-
No-load current (I_o)	typ. 2.5 mA	typ. 2.5 mA
Frequency of operating cycles max.	25 Hz	25 Hz
Permitted ambient temperature	-25...+70°C	-25...+70°C
LED-display	yellow	yellow
Protective circuit	built-in	built-in
Degree of protection IEC 529	IP 67	IP 67
Connection cable	2 m 2 x 0.75 mm ²	2 m 2 x 0.75 mm ²
Housing material	PA	PA
Active surface	PA	PA
Lid	PA	PA



All specifications are subject to change without notice. (05/2004)