



## Capacitive Sensors

### Series 80 - IL - Analogue Output

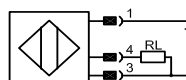
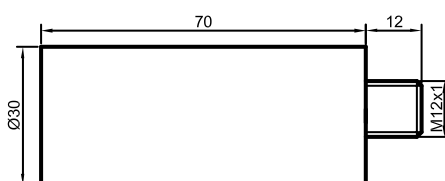
- Housing  $\varnothing$  30 mm
- Housing material: PTFE
- Operating range 0...30 mm
- With flange connector M 12 x 1

Certificate:



Technical data	Flush mountable
Operating range	0...30 mm
Linear range	0...20 mm
Electrical version	3-pin DC
Output function	Analogue
Type Analog	KAS-80-30-IL-PTFE-Y5
Art.-No.	KA 0259
Operating voltage ( $U_b$ )	15...30 V DC
Output current max. ( $I_o$ )	$\geq 20$ mA... $\leq 4$ mA
Permitted residual ripple max.	5 %
No-load current ( $I_o$ )	$\leq 40$ mA
Output current active surface free	$\geq 20$ mA
Output current active surface covered	$\leq 20$ mA... $\leq 4$ mA
Load resistor	$R_L = 0...300$ Ohm
Permitted ambient temperature	0...+60° C
LED-display	Green/yellow/green
Protective circuit	Built-in
Degree of protection IEC 60529	IP 67
Norm	EN 60947-5-2
Connection	Flange connector M 12 x 1
Housing material	PTFE
Active surface	PTFE
Lid	PA/PPO

All specifications are subject to change without notice. (31.05.2007)



**Made in Germany**