

Capacitive Sensors

Series 80 - IL - Analogue Output

Housing Ø 30 mm

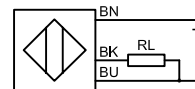
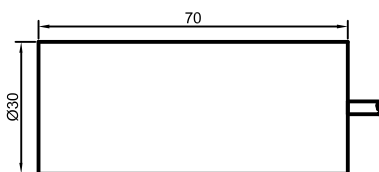
- Housing material: brass
- Flush mountable
- Operating range 0...30 mm

Certificate:



Technical data

Operating range [mm], flush mounting	0...30, yes
Linear range [mm]	0...20
Electrical version	3-wire DC
Output function	analogue
Type Analog	KAS-80-30-IL
Art.-No.	815 000
Connection diagram No.	see below
Operating voltage (U_B)	15...30 V DC
Output current max. (I_o)	$\geq 20\text{mA} \dots \leq 4\text{mA}$
Permitted residual ripple max.	5 %
No-load current (I_o)	$\leq 40\text{ mA}$
Output current active surface free	$\geq 20\text{ mA}$
Output current active surface covered	$\leq 20\text{mA} \dots \leq 4\text{ mA}$
Load resistor	$R_L = 0 \dots 300\text{ Ohm}$
Permitted ambient temperature	0...+60°C
LED-display	green/yellow/green
Protective circuit	built-in
Degree of protection IEC 529	IP 67
Connection cable	2 m 3 x 0.75 mm ²
Housing material	brass
Active surface	PTFE
Lid	PA



All specifications are subject to change without notice. (05/2004)