



## Capacitive Sensors

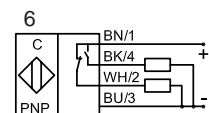
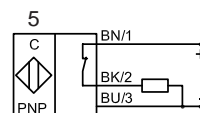
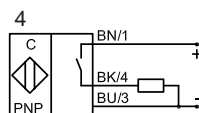
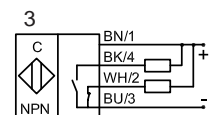
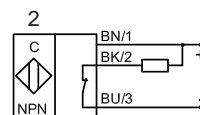
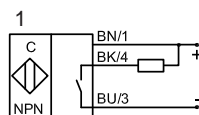
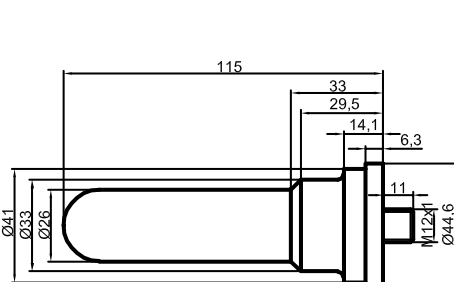
### Series 80 - PNP

- Housing  $\varnothing = 26$  mm
- Housing material PTFE
- SIP / CIP 121° C
- Ideal of detection of chemically aggressive media
- Suitable for foods and pharmaceutical applications
- Housing optimised for fitting system (e.g. with art. no. 196360, art. no. 196361 and art. no. 196362)
- With flange connector M 12 x 1

Certificate:



Technical data	Non-flush mountable
Operating distance $S_n$	5 mm
Operating distance min./max. adjustable	0...20 mm
Electrical version	4-pin DC
Output	Antivalent (NO + NC)
<b>Type NPN</b>	
<b>Art.-No.</b>	
Connection diagram No..	
<b>Type PNP</b>	<b>KAS-80-26-A-PTFE-PFS1-Y5</b>
<b>Art.-No.</b>	<b>KA 0549</b>
Connection diagram No.	6
Operating voltage ( $U_b$ )	10...35 V DC
Output current max. ( $I_o$ )	2 x 250 mA
Load current min.	-
Voltage drop max. ( $U_d$ )	$\leq 2.0$ V
Permitted residual ripple max.	10%
No-load current ( $I_o$ )	Typ. 15 mA
Frequency of operating cycles max.	50 Hz
Permitted ambient temperature	-25...+100° C / CIP 121° C (zero-current)
LED-display	Green/yellow
Protective circuit	Built-in
Degree of protection IEC 60529	IP 67
Norm	EN 60947-5-2
Connection	Flange connector M 12 x 1
Housing material	PTFE (FDA 21 CFR 177.1550)
Active surface	PTFE (FDA 21 CFR 177.1550)
Lid	PA



**Made in Germany**

All specifications are subject to change without notice. (26.01.2009)