



Capacitive Sensors

Series 80 - PNP

Housing M 22 x 1

- Housing material: PTFE / Brass
- Sensing distance 1,9 mm fix adjusted
- With flange connector M 12 x 1

Certificate:



Technical data

Non-flush mountable

Operating distance S_n 1.9 mm \pm 10 %

Operating distance min. / max. adjustable

Electrical version 4-pin DC

Output function Antivalent (NO + NC)

Type NPN

Art.-No.

Connection diagram No.

Type PNP

KAS-80-14-A-M12/M22-PTFE/MS-100°C-Y5-NL

Art.-No.

KA 0839

Connection diagram No.

6

Operating voltage (U_B) 12...30 V DC

Output current max. (I_o) 2 x 200 mA

Voltage drop max. (U_d) \leq 2.0 V

Permitted residual ripple max. 5 %

No-load current (I_o) Typ. 15 mA

Frequency of operating cycles max. 50 Hz

Permitted ambient temperature -25...+100 °C

Permitted ambient temperature -40...+100 °C (zero-current)

LED-display -

Protective circuit Built-in

Degree of protection IEC 60529 IP 67

Norm EN 60947-5-2

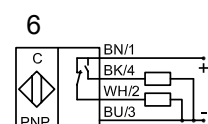
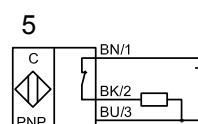
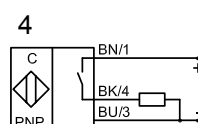
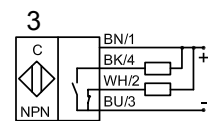
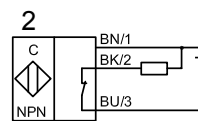
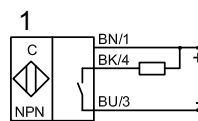
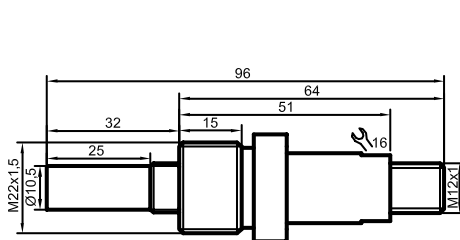
Connection Connector M 12 x 1

Housing material PTFE / Brass

Active surface PTFE (FDA 21 CFR 177.1550)

Lid -

All specifications are subject to change without notice. (29.01.2010)



Made in Germany