

Deluge Valve - Model H

UL Listed

TECHNICAL DATA :

MODEL	H
NOMINAL SIZE	200, 150, 100 and 80 NB
MAXIMUM SERVICE PRESSURE	12 Bar (175 psi)
THREADED OPENING	BSPT
MOUNTING	Vertical or Horizontal mounting
FACTORY HYDROSTATIC TEST PRESSURE	25 Kg./sq.cm. (355 psi)
FLANGE CONNECTION	ANSI B 16.5 #150
RECOMMENDED FLOW RATE	200NB- 300 to 1150 m ³ /hr 150NB - 170 to 650 m ³ /hr 100NB - 50 to 225 m ³ /hr 80NB - 30 to 110 m ³ /hr
FRICTIONAL LOSS IN TERMS OF EQUIVALENT LENGTH OF PIPE (C-120)	200NB - 44.00metres 150NB - 35.00metres 100NB - 15.00metres 80NB - 10.50metres
WET PILOT SPRINKLER HEIGHT LIMITATION	As per graph in the catalogue.
NET WEIGHT WITHOUT TRIM	200NB - 172 Kg. 150NB - 101 Kg. 100NB - 69 Kg. 80NB - 46 Kg.
FINISH	Fire red epoxy painted
APPROVAL	Except 200NB all other sizes are UL listed.
ORDERING INFORMATION	1. Size of valve. 2. Flange specification. 3. Valve trim vertical or horizontal. 4. Trim type - Dry pilot, Wet pilot, Electric, Test and alarm.



DESCRIPTION

Deluge Valve is known as a system control valve in a deluge system, used for fast application of water in a spray system. To protect areas such as power transformer installation, storage tank, conveyor protection and other industrial application etc. With the addition of foaming agent they do protect Aircraft hangar and inflammable liquid fire.

VALVE OPERATION

RD Deluge valve is a quick release, hydraulically operated diaphragm valve. It has three chambers, isolated from each other by the diaphragm operated clapper and seat seal. While in SET position, water pressure is transmitted through an external bypass check valve and restriction orifice from the system supply side to the top chamber, so that supply pressure in the top chamber act across the diaphragm operated clapper which holds the seat against the inlet supply pressure because of the differential pressure design. On detection of fire the top chamber is vented to atmosphere through the outlet port via opened actuation devices. The top chamber pressure cannot be replenished through the restricted inlet port, and the upward force of the supply pressure lifts the clapper allowing the water flow to the system piping network and alarm devices.

TRIM DESCRIPTION

a) BASIC TRIM

The basic trim is required on all RD Deluge valve regardless of release system. It contains those components which are required in all types of installation, such as the Main drain valve, Priming connection, Drip check valve, Emergency release valve and pressure gauges.

Deluge Valve - Model H

UL Listed

b) DRY PILOT TRIM (PNEUMATIC RELEASE)

Dry pilot operation uses a pilot line of closed Sprinkler/ QB detector containing air under pressure, located in the area to be protected. It requires regulated dry air supply with main supply point through restricted orifice. The air pressure to be maintained as specified in the catalogue of Dry Pilot Actuator, Model-H. The pilot line is connected to air inlet side of actuator. The top chamber of the deluge valve is connected to water inlet side of actuator.

When there is an air pressure drop, or due to release of any of the release device on detection of fire, the diaphragm of actuator is lifted and allows the water to drain. This releases the water pressure in the top chamber of the deluge valve, allowing the deluge valve to open and water to flow into the system piping & alarm devices. Recommended air supply pressure for dry pilot trim system is 3 to 4 kg/sq.cm.

c) WET PILOT TRIM (HYDRAULIC RELEASE)

Wet pilot operation uses a pilot line of closed sprinklers containing pressurized water, supplied through the upstream side of the Deluge valve, through a restricted orifice. All the release lines are connected to a common release line. Due to release of any one of the release device, the water pressure in the top chamber of the Deluge valve drops, and the Deluge valve opens.

d) ELECTRIC RELEASE TRIM

To actuate a Deluge valve electrically, a solenoid valve is provided to drain the water from the top chamber of the Deluge valve. A pressure switch is provided to activate an electric alarm, to shut down the desired equipment or to give "Tripped" indication to the Deluge valve. In addition to this a pressure switch can also monitor "Low air pressure" and "Fire condition" when used in dry pilot air line.

e) TEST AND ALARM TRIM WITH SPRINKLER ALARM

This trim is supplied with the sprinkler alarm bell, which bells on actuation of the Deluge valve. A test valve is provided to test the normal operation of the sprinkler alarm bell.

RESETTING PROCEDURE FOR THE DELUGE VALVE

- (i) Close the upstream side stop valve provided below the deluge valve.
- ii) Open both the drain valves and close when the flow of water has ceased.
- (iii) Close the release device/replace the Sprinkler if release was through Sprinkler/Q.B.Detector.
- iv) Inspect and release if required, or close the section of the detection system subjected to "Fire condition".
- (v) In case of dry pilot detection system, open the air supply valve to build-up air pressure. Open the

priming valve fully. Open the upstream side of the stop valve provided below the Deluge valve. No water should flow into the system.

Note : The valve can be reset without undergoing above procedure, by just closing / replacing the release device as valve is auto reset type. The reset time may be long or cause vibration while closing depending on back pressure at the outlet of the valve.

CAUTION

- (a) Do not close the priming valve, down stream and upstream stop valves, while the system is in service.
- (b) The releasing device must be maintained in the open position, when actuated, to prevent the deluge valve from closure.
- (c) While using a Deluge valve in the wet pilot system the height and the length of the wet pilot detection line is to be limited as shown in the wet pilot sprinkler height limitation graph.
- (d) Do not connect the Sprinkler Alarm outlet drainline to close a common drain as it may create back pressure and Sprinkler Alarm may not function.
- (e) Deluge valve must have support to absorb sudden opening or closing vibration shock to the piping.
- (f) The responsibility of maintenance of the protection system and devices in proper operating condition lies with the owner of the system.

SYSTEM TESTING PROCEDURE

- (i) Keep the upstream side of the stop valve partially open. To avoid water flow to system side close the system side stop valve. This valve is to be kept in open position after the testing is completed.
- (ii) Let any of the release devices to trip. This will result in a sudden drop of water pressure in the deluge valve top chamber resulting the deluge valve to open. Close the upstream side stop valve immediately.
- (iii) Reset the valve as per the procedure given under heading "RESETTING PROCEDURE FOR THE DELUGE VALVE".

INSPECTION AND MAINTENANCE

Installed system piping network must be flushed properly before placing the Deluge valve in service.

A qualified and trained person must commission the system. After few initial successful test an authorized person must be trained to perform inspection and testing of the system. It is recommended to have regular inspection and test run of the system as per NFPA

Deluge Valve - Model H UL Listed

guideline or in accordance to the organisation having local jurisdiction.

(i) WARNING

Inspection and testing is to be carried out only by authorised and trained personnel. DO NOT TURN OFF the water supply or close any valve to make repair(s) or test the valve, without placing a roving fire patrol in the area covered by the system. Also inform the local security personnel and central alarm station, so that there is no false alarm signal.

It is recommended to carry out physical inspection of the system at least twice in a week. The inspection should verify that all the control valves are in proper position as per the system requirement and no damage has taken place to any component.

(ii) NORMAL CONDITION

- (a) All main valves are open and are sealed with tamper proof seal.
- (b) Drain valves must be kept closed.
- (c) No leak or drip is detected from the drip valve.
- (d) All the gauges except the system side water pressure gauge, should show the required pressure.
- (e) There should be no leakage in the system.

(iii) NORMAL CONDITION TEST

- (a) The system should be checked for normal condition at least once in a week.
- (b) Test the sprinkler alarm bell or electric alarm by turning the alarm test valve to the test position. The alarm should sound. This test should be carried out at least once in a week.
- (c) Depress the drip valve knob. Significant water accumulation indicates a possible seat leakage.
- (d) Conduct the water flow test as per the procedure of system testing at least once a month.

(iv) PERIODIC CHECK

Conduct the water flow test by actuating few of the release devices provided in the system. Clean all strainer(s) and priming line restriction. This test is to be carried out at least once in three months.

ABNORMAL CONDITION

(i) ALARM FAILS TO SOUND

- (a) Check for any obstruction in the alarm test line, make certain that the sprinkler alarm is free to operate.
- (b) If an electric alarm is provided, check the electrical circuitry to the alarm.

(ii) FALSE TRIPS

- (a) Check for clogging in priming line, restriction orifice check valve, priming valve & strainer.
- (b) Leakage in the release system.
- (c) The deluge air panel orifice clogged or low supply pressure.

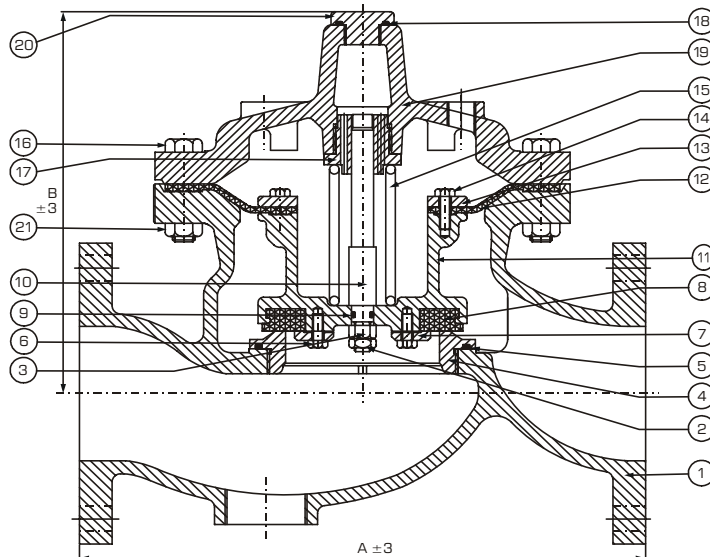
(iii) LEAKAGE THROUGH THE DELUGE VALVE

- (a) Damaged deluge valve seat or obstruction on the seat face by foreign object.
- (b) Leakage in release system.
- (c) Partly clogged priming line restriction orifice check valve.
- (d) Low air pressure on release system line or leakage in release system.

Deluge Valve - Model H

UL Listed

DELUGE VALVE MODEL-H SIZE 200 / 150 / 100 / 80 NB



DIMENSION in millimeter (Approximate)

VALVE NOMINAL SIZE	'A'	'B'
200 NB	552	360
150 NB	462	321
100 NB	412	290
80 NB	372	272

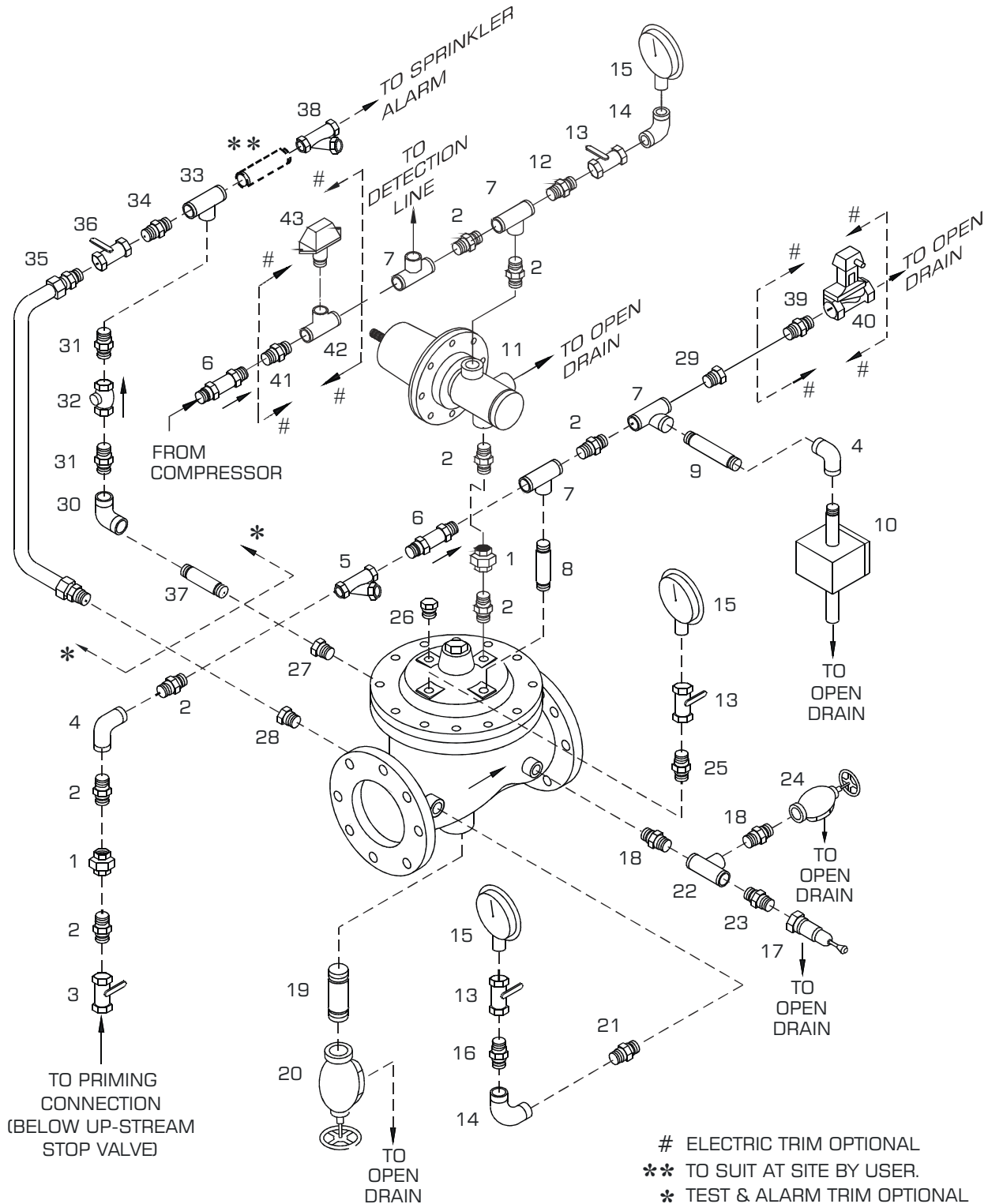
PART LIST

ITEM	PART NO.				DESCRIPTION	QTY.				MATERIAL SPECIFICATION
	200 NB	150 NB	100 NB	80 NB		200 NB	150 NB	100 NB	80 NB	
1	3641	2421	2501	2781	HOUSING	1	1	1	1	CAST STEEL /ASTM A216 WCB
2	9147	9147	9147	9147	LOCK NUT	1	1	1	1	STAINLESS STEEL 304
3	9135	9135	9135	9135	HEX NUT	1	1	1	1	STAINLESS STEEL 304
4	3646	2426	2506	2785	SEAT	1	1	1	1	BRONZE IS:318 LTB-II/ASTM B62
5	8537	9783	9784	9791	"O" RING	1	1	1	1	NEOPRENE RUBBER
6	9112	9112	9112	-	HEX HEAD BOLT	6	4	4	-	STAINLESS STEEL 304
7	3645	2425	2505	2789	RUBBER CLAMP	1	1	1	1	BRONZE IS:318 LTB-II/STM B 62
8	3648	2428	2508	2787	RUBBER SEAT	1	1	1	1	NEOPRENE RUBBER
9	9986	9986	9986	9986	"O" RING	1	1	1	1	NEOPRENE RUBBER
10	3650	2432	2511	2791	SPINDLE	1	1	1	1	S.S. 304/ASTM A276 TYPE-304
11	3643	2423	2503	2784	CLAPPER	1	1	1	1	BRONZE IS:318 LTB-II/ASTM B62
12	3647	2427	2507	2786	DIAPHRAGM	1	1	1	1	NEOPRENE RUBBER
13	3644	2424	2504	2788	CLAMP RING	1	1	1	1	BRONZE IS:318 LTB-II/ASTM B62
14	8806	9151	9151	9151	HEX HEAD BOLT	8	8	8	8	STAINLESS STEEL 304
15	3651	2433	2512	2792	SPRING	1	1	1	1	STAINLESS STEEL 316
16	9047	9047	9047	9058	HEX HEAD BOLT	12	12	12	12	IS:1363/STEEL ISO 4018 (GALVANISED)
17	3655	2431	2510	2793	SPINDLE ADAPTOR	1	1	1	1	BRASS IS:319-I/ASTM B16
18	9982	9787	9788	9982	"O" RING	1	1	1	1	NEOPRNE RUBBER
19	3649	2429	2509	2783	COVER	1	1	1	1	CAST STEEL / ASTM A216 GR WCB
20	2514	2514	2514	2514	PLUG	1	1	1	1	STEEL PLATED
21	9019	9019	9019	9018	HEX NUT	12	12	12	12	IS:1363/STEEL IS 4018 (GALVANISED)

Deluge Valve - Model H

UL Listed

PNEUMATIC & ELECTRIC RELEASE TRIM FOR HORIZONTAL MOUNTING DELUGE VALVE MODEL - H, 200/150/100/80 NB



NOTE: WHEN TEST & ALARM TRIM IS SUPPLIED THEN SL.NO.27 & 28 PLUG NOT REQUIRED.
WHEN ELECTRIC TRIM IS SUPPLIED THEN SL.NO.29 PLUG NOT REQUIRED.

Rapidrop Global



Deluge Valve - Model H UL Listed

DRY PILOT BASIC TRIM , WITH TEST AND ALARM TRIM & ELECTRIC RELEASE TRIM MODEL -A

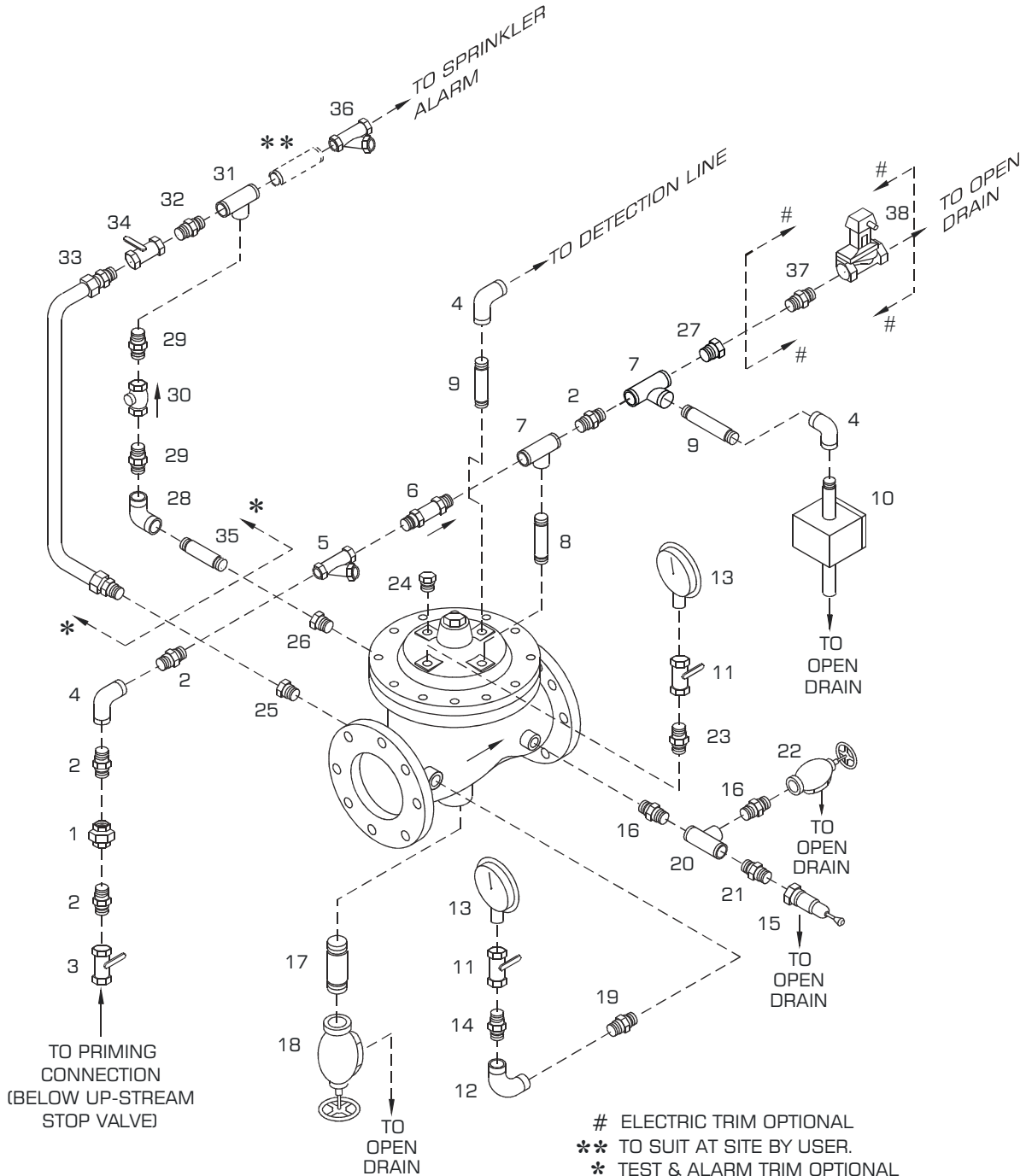
NO	CODE	DESCRIPTION	SIZE	200NB	150NB	100NB	80NB
1	8627	UNION	½"	2	2	2	2
2	9365	HEX NIPPLE	½"	8	8	8	8
3	9423	BALL VALVE	½"	1	1	1	1
4	8616	ELBOW	½"	2	2	2	2
5	9381	'Y' TYPE STRAINER	½"	1	1	1	1
6	1906	RESTRICTION CHECK VALVE	'RD' MAKE MODEL-A	2	2	2	2
7	8619	TEE	½"	4	4	4	4
8	9480	PIPE NIPPLE	½" X 80 MM	1	1	1	1
9	9397	PIPE NIPPLE	½" X 100 MM	1	1	1	1
10	1921	EMERGENCY RELEASE STATION	'RD' MAKE MODEL-MR	1	1	1	1
11	1561	DRY PILOT ACTUATOR	'RD' MAKE MODEL-DPA	1	1	1	1
12	9413	REDUCING HEX NIPPLE	½" X ¼"	1	1	1	1
13	9477	GAUGE VALVE	¼"	3	3	3	3
14	9374	ELBOW	¼"	2	2	2	2
15	9526	PRESSURE GAUGE	¼"	3	3	3	3
16	9363	HEX NIPPLE	¼"	1	1	1	1
17	1911	DRIP VALVE	'RD' MAKE MODEL-A	1	1	1	1
18	9367	HEX NIPPLE	1"	2	2	2	2
19	8950	PIPE NIPPLE	2" X 80 MM	1	1	1	-
19	8952	PIPE NIPPLE	1-1/4" X 80 MM	-	-	-	1
20	9394	ANGLE VALVE	2"	1	1	1	-
20	9392	ANGLE VALVE	1-1/4"	-	-	-	1
21	9552	REDUCING NIPPLE	¼"X1/2"X65 MM	1	1	1	1
22	8621	TEE	1"	1	1	1	1
23	9486	REDUCING HEX NIPPLE	1" X ½"	1	1	1	1
24	9391	ANGLE VALVE	1"	1	1	1	1
25	9413	REDUCING HEX NIPPLE	½" X ¼"	1	1	-	-
25	9552	REDUCING NIPPLE	¼"X½"X65 MM	-	-	1	1
26	8629	PLUG	½"	1	1	1	1
27	8630	PLUG	¾"	1	1	1	1
28	8629	PLUG	½"	1	1	1	1
29	8629	PLUG	½"	1	1	1	1
TEST AND ALARM TRIM (OPTIONAL)							
30	8617	ELBOW	¾"	1	1	1	1
31	9366	HEX NIPPLE	¾"	2	2	2	2
32	9421	SWING CHECK VALVE	¾"	1	1	1	1
33	8620	TEE	¾"	1	1	1	1
34	9553	REDUCING HEX NIPPLE	¾" X ½"	1	1	1	1
35	3653	COPPER TUBE ASSY	½"	1	-	-	-
35	2438	COPPER TUBE ASSY	½"	-	1	-	-
35	2518	COPPER TUBE ASSY	½"	-	-	1	-
35	2796	COPPER TUBE ASSY	½"	-	-	-	1
36	9423	BALL VALVE.	½"	1	1	1	1
37	9441	PIPE NIPPLE	¾"X 80 MM	-	-	1	1
37	9406	PIPE NIPPLE	¾"X 100 MM	1	1	-	-
38	9382	'Y' TYPE STRAINER	¾"	1	1	1	1
ELECTRIC TRIM FOR SOLENOID VALVE (OPTIONAL)							
39	9365	HEX NIPPLE	½"	1	1	1	1
40	-	SOLENOID VALVE	½" TWO WAY	1	1	1	1
ELECTRIC TRIM FOR PRESSURE SWITCH (OPTIONAL)							
41	9365	HEX NIPPLE	½"	1	1	1	1
42	8619	TEE	½"	1	1	1	1
43	-	PRESSURE SWITCH	½"	1	1	1	1



Deluge Valve - Model H

UL Listed

HYDRAULIC & ELECTRIC RELEASE TRIM FOR HORIZONTAL MOUNTING DELUGE VALVE MODEL - H, 200/150/100/80 NB



NOTE: WHEN TEST & ALARM TRIM IS SUPPLIED THEN SL.NO.25 & 26 PLUG NOT REQUIRED.
WHEN ELECTRIC TRIM IS SUPPLIED THEN SL.NO.27 PLUG NOT REQUIRED.

Deluge Valve - Model H

UL Listed

HYDRAULIC & ELECTRIC RELEASE TRIM FOR HORIZONTAL MOUNTING DELUGE VALVE MODEL - H, 200/150/100/80 NB

NO.	CODE	DESCRIPTION	SIZE	200NB	150NB	100NB	80NB
1	8627	UNION	½"	1	1	1	1
2	9365	HEX NIPPLE	½"	4	4	4	4
3	9423	BALL VALVE	½"	1	1	1	1
4	8616	ELBOW	½"	4	4	4	4
5	9381	'Y' TYPE STRAINER	½"	1	1	1	1
6	1906	RESTRICTION CHECK VALVE	'RD' MAKE MODEL - A	1	1	1	1
7	8619	TEE	½"	2	2	2	2
8	9480	PIPE NIPPLE	½" X 80 MM	1	1	1	1
9	9397	PIPE NIPPLE	½" x 100 MM	2	2	2	2
10	1921	EMERGENCY RELEASE STATION	'RD' MAKE MODEL - MR	1	1	1	1
11	9477	GAUGE VALVE	¼"	2	2	2	2
12	9374	ELBOW	¼"	1	1	1	1
13	9526	PRESSURE GAUGE	¼"	2	2	2	2
14	9363	HEX NIPPLE	¼"	1	1	1	1
15	1911	DRIP VALVE	'RD' MAKE MODEL-A	1	1	1	1
16	9367	HEX NIPPLE	1"	2	2	2	2
17	8850	PIPE NIPPLE	2" X 80 MM	1	1	1	-
17	8952	PIPE NIPPLE	1-¼" X 80 MM	-	-	-	1
18	9394	ANGLE VALVE	2"	1	1	1	-
18	9392	ANGLE VALVE	1 - ¼"	-	-	-	1
19	9552	REDUCING NIPPLE	¼"X½"X65 MM	1	1	1	1
20	8621	TEE	1"	1	1	1	1
21	9486	REDUCING NIPPLE	1" X ½"	1	1	1	1
22	9391	ANGLE VALVE	1"	1	1	1	1
23	9413	REDUCING HEX NIPPLE	½"X¼"	1	1	-	-
23	9552	REDUCING NIPPLE	¼"X½"X65 MM	-	-	1	1
24	8629	PLUG	½"	1	1	1	1
25	8629	PLUG	½"	1	1	1	1
26	8630	PLUG	¾"	1	1	1	1
27	8629	PLUG	½"	1	1	1	1
TEST AND ALARM TRIM (OPTIONAL)							
28	8617	ELBOW	¾"	1	1	1	1
29	9366	HEX NIPPLE	¾"	2	2	2	2
30	9421	SWING CHECK VALVE	¾"	1	1	1	1
31	8620	TEE	¾"	1	1	1	1
32	9553	REDUCING HEX NIPPLE	¾" X ½"	1	1	1	1
33	3653	COPPER TUBE ASSY	½"	1	1	1	1
33	2438	COPPER TUBE ASSY	½"	1	1	1	1
33	2518	COPPER TUBE ASSY	½"	1	1	1	1
33	2796	COPPER TUBE ASSY	½"	1	1	1	1
34	9423	BALL VALVE.	½"	1	1	1	1
35	9441	PIPE NIPPLE	¾" X 80 MM	-	-	1	1
35	9406	PIPE NIPPLE	¾" X 100 MM	1	1	-	-
36	9382	'Y' TYPE STRAINER	¾"	1	1	1	1
ELECTRIC TRIM FOR SOLENOID VALVE (OPTIONAL)							
37	9365	HEXNIPPLE	½"	1	1	1	1
38	-	SOLENOID VALVE	½"X TWO WAY	1	1	1	1

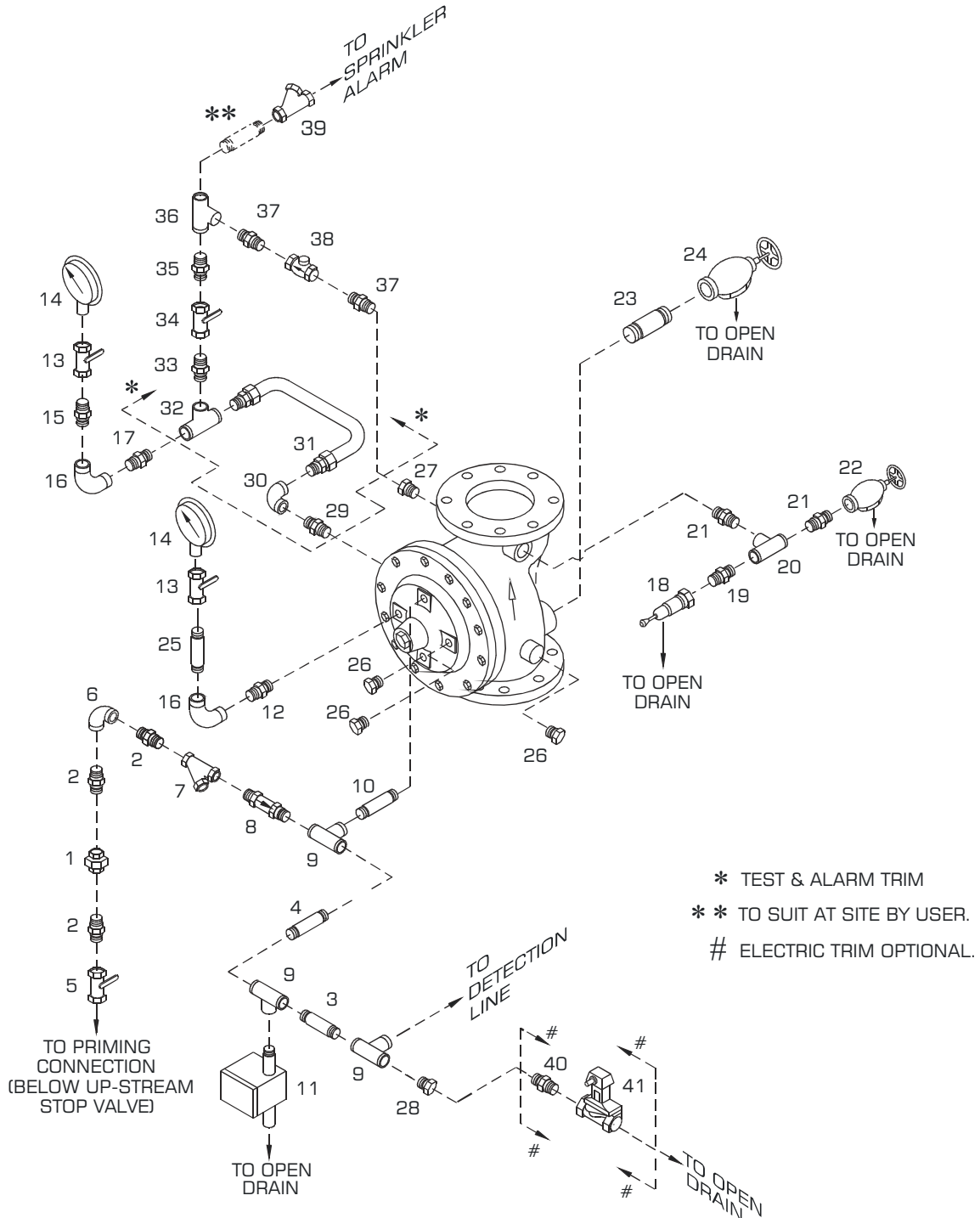
Deluge Valve - Model H UL Listed

PNEUMATIC & ELECTRIC RELEASE TRIM FOR VERTICAL MOUNTING DELUGE VALVE MODEL - H, 200/150/100/80 NB

NO	CODE	DESCRIPTION	SIZE	200NB	150NB	100NB	80NB
1	8627	UNION	1/2"	3	3	3	3
2	9365	HEX NIPPLE	1/2"	9	9	9	9
3	9561	PIPE NIPPLE	1/2" X 60 MM	-	1	1	1
3	9569	PIPE NIPPLE	1/2" X 90 MM	1	-	-	-
4	9568	PIPE NIPPLE	1/4" X 90 MM	1	1	1	1
5	9423	BALL VALVE	1/2"	1	1	1	1
6	8616	ELBOW	1/2"	1	1	1	1
7	9381	'Y' TYPE STRAINER	1/2"	1	1	1	1
8	1906	RESTRICTION CHECK VALVE	'RD' MAKE MODEL - A	2	2	2	2
9	8619	TEE	1/2"	5	5	5	5
10	9480	PIPE NIPPLE	1/2" X 80 MM	1	1	1	1
11	1921	EMERGENCY RELEASE STATION	'RD' MAKE MODEL - MR	1	1	1	1
12	1561	DRY PILOT ACTUATOR	'RD' MAKE MODEL - DPA	1	1	1	1
13	9413	REDUCING HEX NIPPLE	1/2" X 1/4"	2	2	2	2
14	9477	GAUGE VALVE	1/4"	3	3	3	3
15	9526	PRESSURE GAUGE	1/4"	3	3	3	3
16	9363	HEX NIPPLE	1/4"	1	1	1	1
17	9374	ELBOW	1/4"	2	2	2	2
18	9552	REDUCING NIPPLE	1/4" X 1/2" X 65MM	1	1	1	1
19	1911	DRIP VALVE	'RD' MAKE MODEL-A	1	1	1	1
20	9486	REDUCING HEX NIPPLE	1" X 1/2"	1	1	1	1
21	8621	TEE	1"	1	1	1	1
22	9367	HEX NIPPLE	1"	2	2	2	2
23	9391	ANGLE VALVE	1"	1	1	1	1
24	8950	PIPE NIPPLE	2" X 80 MM	1	1	1	-
24	8952	PIPE NIPPLE	1-1/4" X 80 MM	-	-	-	1
25	9394	ANGLE VALVE	2"	1	1	1	-
25	9392	ANGLE VALVE	1-1/4"	-	-	-	1
26	8629	PLUG	1/2"	3	3	3	3
27	8630	PLUG	3/4"	1	1	1	1
28	8629	PLUG	1/2"	1	1	1	1
TEST AND ALARM TRIM (OPTIONAL)							
29	8616	ELBOW	1/2"	1	1	1	1
30	3654	COPPER TUBE ASSY.	1/2"	1	-	-	-
30	2411	COPPER TUBE ASSY.	1/2"	-	1	-	-
30	2519	COPPER TUBE ASSY.	1/2"	-	-	1	-
30	2797	COPPER TUBE ASSY.	1/2"	-	-	-	1
31	8619	TEE	1/2"	1	1	1	1
32	9365	HEX NIPPLE	1/2"	1	1	1	1
33	9423	BALL VALVE	1/2"	1	1	1	1
34	9553	REDUCING HEX NIPPLE	3/4" X 1/2"	1	1	1	1
35	8620	TEE	3/4"	1	1	1	1
36	9366	HEX NIPPLE	3/4"	2	2	2	2
37	9421	SWING CHECK VALVE	3/4"	1	1	1	1
38	9382	'Y' TYPE STRAINER	3/4"	1	1	1	1
39	9365	HEX NIPPLE	1/2"	1	1	1	1
ELECTRIC TRIM FOR SOLENOID VALVE (OPOTIONAL)							
40	9365	HEX NIPPLE	1/2"	1	1	1	1
41	-	SOLENOID VALVE	1/2" TWO WAY	1	1	1	1
ELCTRIC TRIM FOR PRESSURE SWITCH (OPTIONAL)							
42	9365	HEX NIPPLE	1/2"	1	1	1	1
43	8619	TEE	1/2"	1	1	1	1
44	-	PRESSURE SWITCH	1/2"	1	1	1	1

Deluge Valve - Model H UL Listed

HYDRAULIC & ELECTRIC RELEASE TRIM FOR VERTICAL MOUNTING DELUGE VALVE MODEL - H, 200/150/100/80 NB



NOTE: WHEN TEST & ALARM TRIM IS SUPPLIED THEN SL.NO.27 PLUG NOT REQUIRED.
WHEN ELECTRIC TRIM IS SUPPLIED THEN SL.NO.28 PLUG NOT REQUIRED.

Deluge Valve - Model H UL Listed

HYDRAULIC & ELECTRIC RELEASE TRIM FOR VERTICAL MOUNTING

DELUGE VALVE MODEL - H, 200/150/100/80 NB

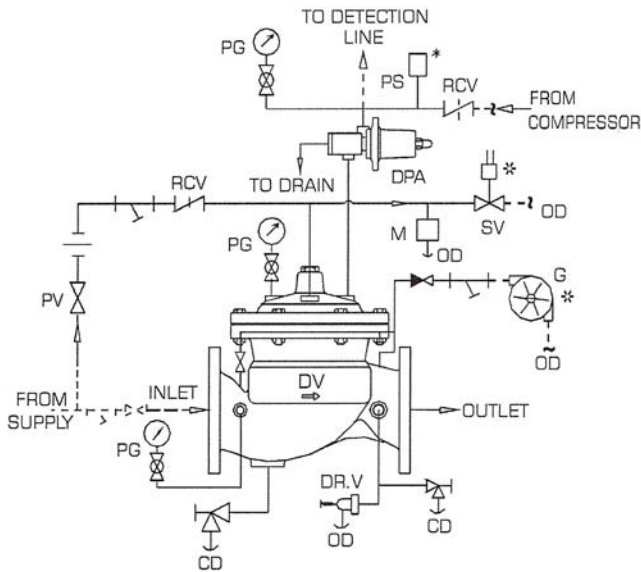
NO	CODE	DESCRIPTION	SIZE	200NB	150NB	100NB	80NB
1	8627	UNION	½"	1	1	1	1
2	9365	HEX NIPPLE	½"	3	3	3	3
3	9561	PIPE NIPPLE	½" X 60MM	-	1	1	1
3	9569	PIPE NIPPLE	½" X 90MM	1	-	-	-
4	9397	PIPE NIPPLE	½" X 100 MM	-	-	1	1
4	9399	PIPE NIPPLE	½" X 130 MM	1	1	-	-
5	9423	BALL VALVE	½"	1	1	1	1
6	8616	ELBOW	½"	1	1	1	1
7	9381	'Y' TYPE STRAINER	½"	1	1	1	1
6	1906	RESTRICTION CHECK VALVE	'RD' MAKE MODEL - A	1	1	1	1
9	8619	TEE	½"	3	3	3	3
10	9480	PIPE NIPPLE	½" X 80 MM	1	1	1	1
11	1921	EMERGENCY RELEASE STATION	'RD' MAKE MODEL - MR	1	1	1	1
12	9413	REDUCING HEX NIPPLE	½" X ¼"	1	1	1	1
13	9477	GAUGE VALVE	¼"	2	2	2	2
14	9526	PRESSURE GAUGE	¼"	2	2	2	2
15	9363	HEX NIPPLE	¼"	1	1	1	1
16	9374	ELBOW	¼"	2	2	2	2
17	9552	REDUCING NIPPLE	¼" X ½" X 65 MM	1	1	1	1
18	1911	DRIP VALVE	'RD' MAKE MODEL-A	1	1	1	1
19	9486	REDUCING HEX NIPPLE	1 X ½"	1	1	1	1
20	8621	TEE	1"	1	1	1	1
21	9367	HEX NIPPLE	1"	2	2	2	2
22	9391	ANGLE VALVE	1"	1	1	1	1
23	8950	PIPE NIPPLE	2" X 80 MM	1	1	1	-
23	8952	PIPE NIPPLE	1-¼" X 80 MM	-	-	-	1
24	9394	ANGLE VALVE	2"	1	1	1	-
24	9392	ANGLE VALVE	1-¼"	1	-	-	1
25	9568	PIPE NIPPLE	¼" X 90 MM	1	1	1	1
26	8629	PLUG	½"	3	3	3	3
27	8630	PLUG	¾"	1	1	1	1
28	8629	PLUG	½"	1	1	1	1
TEST AND ALARM TRIM (OPTIONAL)							
29	9365	HEX NIPPLE	½"	1	1	1	1
30	8616	ELBOW	½"	1	1	1	1
31	3654	COPPER TUBE ASSY.	½"	1	-	-	-
31	2411	COPPER TUBE ASSY.	½"	-	1	-	-
31	2519	COPPER TUBE ASSY.	½"	-	-	1	-
31	2797	COPPER TUBE ASSY.	½"	-	-	-	1
32	8619	TEE	½"	1	1	1	1
33	9365	HEX NIPPLE	½"	1	1	1	1
34	9423	BALL VALVE	½"	1	1	1	1
35	9553	REDUCING HEX NIPPLE	¾" X ½"	1	1	1	1
36	8620	TEE	¾"	1	1	1	1
37	9366	HEX NIPPLE	¾"	2	2	2	2
38	9421	SWING CHECK VALVE	¾"	1	1	1	1
39	9382	'Y' TYPE STRAINER	¾"	1	1	1	1
ELECTRIC TRIM FOR SOLENOID VALVE (OPTIONAL)							
40	9365	HEX NIPPLE	½"	1	1	1	1
41	-	SOLENOID VALVE	½" TWO WAY	1	1	1	1

Deluge Valve - Model H

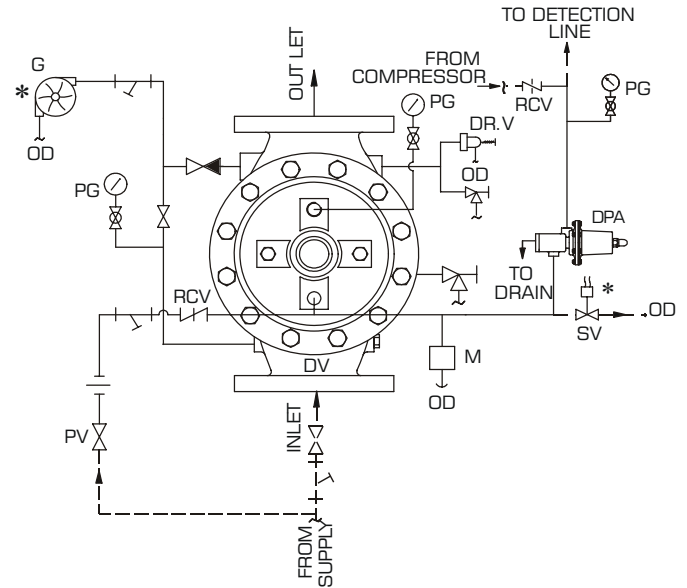
UL Listed

ELECTRIC & PNEUMATIC RELEASE TRIM - SCHEMATIC DELUGE VALVE - 200/150 / 100 / 80 NB

HORIZONTAL MOUNTING

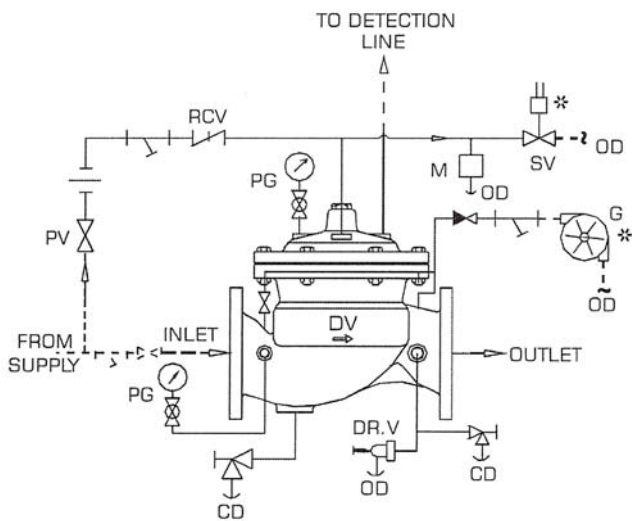


VERTICAL MOUNTING

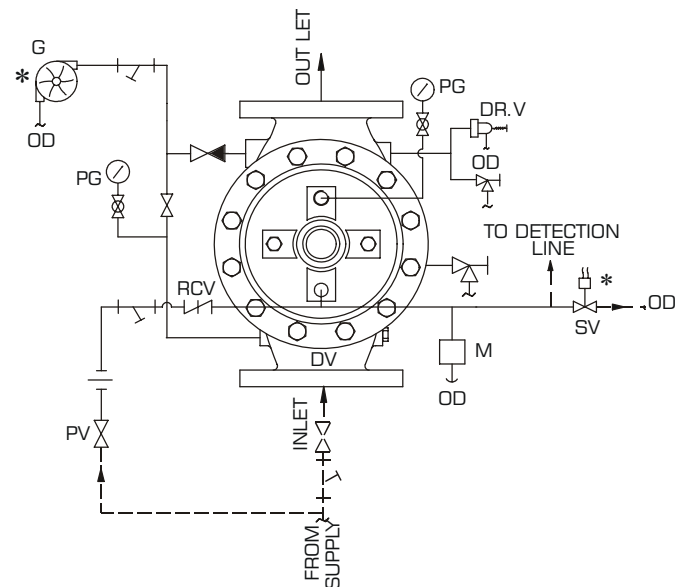


ELECTRIC & HYDRAULIC RELEASE TRIM - SCHEMATIC DELUGE VALVE - 200/150 / 100 / 80 NB

HORIZONTAL MOUNTING



VERTICAL MOUNTING



- VALVE
- STRAINER
- OPTIONAL
- GAUGE VALVE
- ANGLE VALVE

- STOP VALVE
- BY USER
- SV - SOLONOID VALVE
- PS - PRESSURE SWITCH
- M - SIX WAY MANIFOLD

- DR.V - DRIP VALVE
- CD - COMMON DRAIN
- F - FUNNEL
- DV - DELUGE VALVE
- PG - PRESSURE GAUGE

- NON RETURN VALVE
- OD - OPEN DRAIN
- ER - EMERGENCY RELEASE BOX
- RCV - RESTRICTION CHECK VALVE

Rapidrop Global

Rutland Business Park, Newark Road, Peterborough, PE1 5WA, United Kingdom
 Tel: +44 (0) 1733 847 510 Fax: +44 (0) 1733 553 958
 e-mail: rapidrop@rapidrop.com web: www.rapidrop.com

© 2009 Rapidrop
 Rapidrop® is a registered trade mark.
 Rapidrop Global Limited
 Registered in England No. 5503278

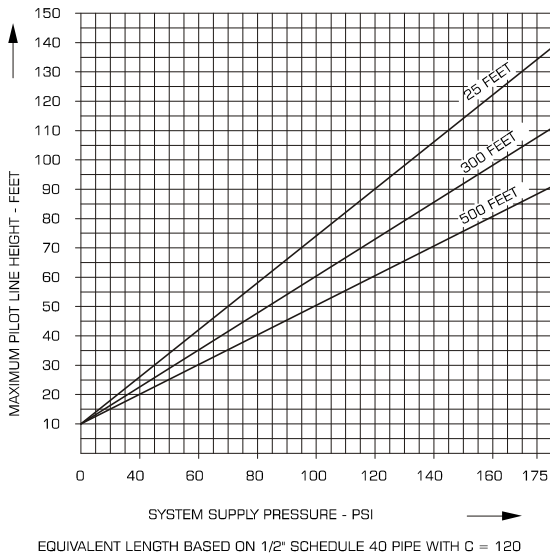
Continued Overleaf
 Page 13 of 14



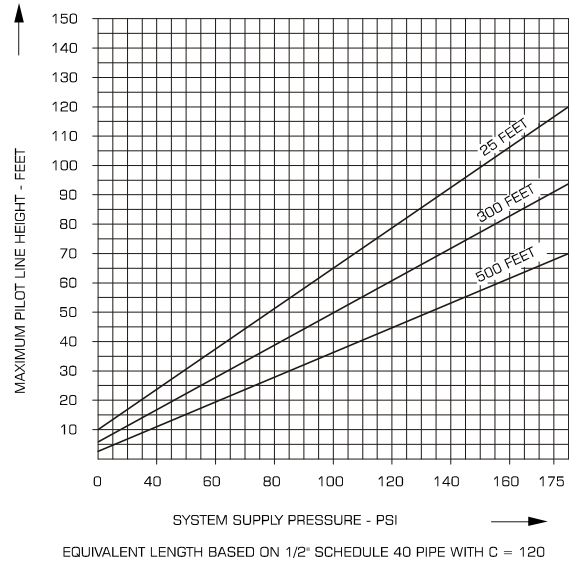


Deluge Valve - Model H UL Listed

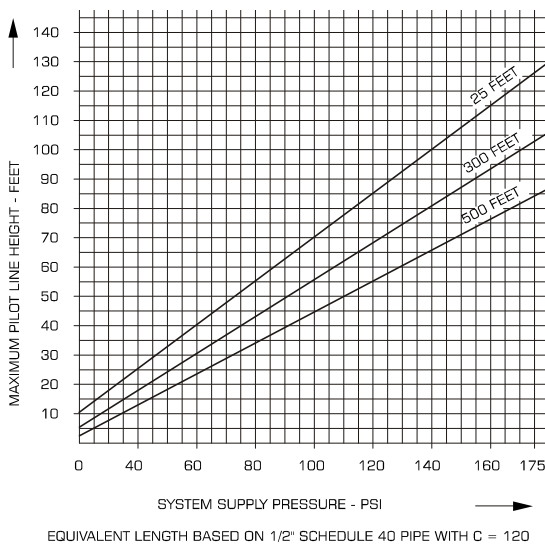
WET PILOT SPRINKLER HEIGHT LIMITATION OF 150 NB



WET PILOT SPRINKLER HEIGHT LIMITATION OF 100 NB



WET PILOT SPRINKLER HEIGHT LIMITATION OF 80 NB



LIMITED WARRANTY

Products supplied by Rapidrop (RD), are warranted against defects in material and workmanship for a period of Two (2) years from the date of shipment. RD's obligation under this warranty is limited to replace or repair the products or its parts, which are shown to RD's examination to be in a defective condition attributable to RD. No warranty is given for products or components which have been subject, to misuse, improper installation, corrosion, wear and tear, improper storage, modification or repaired. If the defect attributable to RD cannot be rectified by repair or replacement, then RD may elect to refund the purchase price of the equipment in complete discharge of its obligation under this Limited Warranty.

IN NO EVENT SHALL RAPIDROP, BE LIABLE IN CONTRACT, STRICT LIABILITY OR ANY OTHER LEGAL THEORY, FOR INCIDENTAL, IN-DIRECT, SPECIAL OR CONSEQUENTIAL DAMAGES, INCLUDING DAMAGES, FOR INJURY TO PERSON OR DEATH OR DAMAGE TO PROPERTY AND OR PENALTIES RESULTING FROM ANY PRODUCTS OR COMPONENT MANUFACTURED OR ASSEMBLED BY RD. THIS IS LIMITED WARRANTY ONLY. RD DISCLAIMS WITH RESPECT TO THE PRODUCTS ALL IMPLIED WARRANTIES OF MERCHANTABILITY AND ALL IMPLIED WARRANTIES OF FITNESS FOR A PARTICULAR PURPOSE. THERE IS NO WARRANTY OF ANY NATURE MADE BY RD BEYOND ASSTATED ABOVE.

NOTICE :

The equipment presented in this bulletin is to be installed in accordance with the latest publication standards of NFPA or other similar organisations and also with the provision of government codes or ordinances wherever applicable. The information provided by us are to the best of our knowledge and belief, and are general guidelines only. Site handling and installation control is beyond our reach. Hence we give no guarantee for result and take no liability for damages, loss or penalties whatsoever, resulting from our suggestion, information, recommendation or damages due to our product. Product development is a continuous programme of Rapidrop and hence the right to modify any specification without prior notice is reserved with the company.

