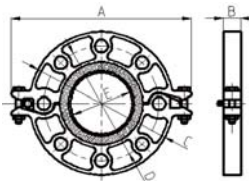


## Grooved Split Flange Adaptor

### 321-PN16

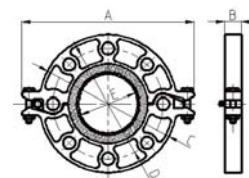
GROOVED FLANGE



Nominal Size mm/in	Pipe O.D mm/in	Working Pressure PSI/MPa	Dimensions					Bolt/Nut		Certificate
			A mm/in	B mm/in	C mm/in	D mm/in	E mm/in	No.-SIZE mm		
40 1½	48.3 1.900	225 1.6	195 7.68	24 0.95	150 5.90	110 4.33	45.4 1.78	M10X50-2 4-M16	UL FM	
50 2	60.3 2.375	225 1.6	220 8.66	24 0.95	165 6.50	125 4.92	57.5 2.26	M10X50-2 4-M16	UL FM	
65 2½	76.1 3.000	225 1.6	235 9.25	24 0.95	185 7.28	145 5.71	72.7 2.86	M10X50-2 4-M16	UL FM	
80 3	88.9 3.500	225 1.6	252 9.92	24 0.95	200 7.87	160 6.30	85.5 3.37	M10X50-2 8-M16	UL FM	
100 4	108.0 4.250	225 1.6	280 11.02	25.5 1.00	220 8.66	180 7.09	104.5 4.11	M12X55-2 8-M16	UL FM	
100 4	114.3 4.500	225 1.6	280 11.02	25.5 1.00	229 9.00	180 7.09	110.5 4.35	M12X55-2 8-M16	UL FM	
125 5	133.0 5.250	225 1.6	312 12.28	25.5 1.00	250 9.84	210 8.27	129.2 5.08	M12X65-2 8-M16	UL FM	
125 5	139.7 5.500	225 1.6	320 12.60	25.5 1.00	254 10.00	210 8.27	135.5 5.33	M12X65-2 8-M16	UL FM	
150 6	159.0 6.25	225 1.6	346 13.62	25.5 1.00	280 11.00	240 9.45	154.8 6.10	M12X65-2 8-M20	UL FM	
150 6	165.1 6.500	225 1.6	346 13.62	25.5 1.00	280 11.00	240 9.45	160.8 6.33	M12X65-2 8-M20	UL FM	
150 6	168.3 6.625	225 1.6	346 13.62	25.5 1.00	280 11.00	240 9.45	164.3 6.47	M12X65-2 8-M20	UL FM	
200 8	219.1 8.625	225 1.6	414.3 16.31	30 1.18	341.4 13.44	295 11.61	214.9 8.46	3/8X70-2 12-M20	UL FM VdS	
250 10	273.0 10.750	225 1.6	481.2 18.94	30.3 1.19	405.6 15.97	355 13.98	268.9 10.59	3/8X70-2 12-M24	UL FM VdS	
300 12	323.9 12.750	225 1.6	530.5 20.88	30.3 1.19	460 18.11	410 16.14	318.9 12.56	3/8X70-2 12-M24	UL FM	

### 321A-ANSI 125/150

GROOVED FLANGE



Nominal Size mm/in	Pipe O.D mm/in	Working Pressure PSI/MPa	Dimensions					Bolt/Nut		Certificate
			A mm/in	B mm/in	C mm/in	D mm/in	E mm/in	No.-SIZE mm		
50 2	60.3 2.375	300 2.07	206 8.11	22 0.86	152 5.98	121 4.76	57.5 2.26	M10X50-2 4-5/8	UL FM	
65 2½	73.0 2.875	300 2.07	230 9.05	22 0.86	178 7.00	140 5.51	69.8 2.74	M10X50-2 4-5/8	UL FM	
80 3	88.9 3.500	300 2.07	242 9.53	24 0.95	191 7.52	152 5.98	85.5 3.37	M10X50-2 4-5/8	UL FM	
100 4	114.3 4.500	300 2.07	280 11.02	24 0.95	229 9.00	191 7.52	110.5 4.35	M12X55-2 8-5/8	UL FM	
125 5	141.3 5.563	300 2.07	325 12.79	24.5 0.96	254 10.00	216 8.50	137.4 5.41	M12X65-2 8-3/4	UL FM	
150 6	168.3 6.625	300 2.07	346 13.62	25.5 1.00	280 11.00	241.3 9.50	164.3 6.47	M12X65-2 8-3/4	UL FM	
200 8	219.1 8.625	300 2.07	414.3 16.31	30 1.18	341.4 13.44	298.5 11.75	214.9 8.46	3/8X70-2 8-3/4	UL FM	
250 10	273.0 10.750	300 2.07	481.2 18.94	30.3 1.19	405.6 15.97	361.95 14.25	268.9 10.59	3/8X70-2 12-7/8	UL FM	
300 12	323.9 12.750	300 2.07	553.3 21.78	30.4 1.20	482.6 19.00	431.8 17.00	318.9 12.56	3/8X70-2 12-7/8	UL FM	



Ref: 566

Rapidrop Global

Rutland Business Park, Newark Road, Peterborough, PE1 5WA, United Kingdom

Tel: +44 (0) 1733 847 510 Fax: +44 (0) 1733 553 958

e-mail: [rapidrop@rapidrop.com](mailto:rapidrop@rapidrop.com) web: [www.rapidrop.com](http://www.rapidrop.com)