



There are many reasons for choosing Mini-TriOptic beacons:

- Superior warning effect in rain, snow, fog or sunshine
- Electronic speed regulator
- Small footprint
- Low weight: max. 780 g
- Low-noise, minimal noise during operation
- Protection class: IP 56
- Magnet design with very good adhesive properties, scratch-resistant and non-slip
- Good price-performance ratio
- Impact-proof color dome
- No high voltage, rendering it safe even in case of collision

The **Mini-TriOptic** combines all the positive characteristics of the Xenon flash and rotating mirror beacons. Excellent warning properties are achieved in short and long-distance applications. Blue and amber is also detected at great distances as "blue" or "amber" color. Users quickly notice the lightweight design of the "Kojak-style" beacon which only weighs half as much as conventional magnet-base beacons. The **Mini-TriOptic** can be quickly and easily mounted on vehicle roofs without causing any damage. There are many reasons to choose the **Mini-TriOptic**:

- Lighting technology in Fresnell lens system. This produces 80% greater light visibility.  
The result: a good warning effect in close range and over long distances.
- The triple-lens technology allows the required blinking frequency of 2-4 Hz to be achieved while only rotating at 1/3 the speed of mirror rotating beacons. The result: The light beam stays visible three times longer than usual. This ensures better recognition of the colored light.



088 027 913-000 (07/09 GB)

### Technical data

Operating voltage:	12 V <sub>DC</sub>
Current consumption:	<5A
Lamp:	"H1" : 12V/55 W
Dome color:	blue, amber
Spiral cable:	3 m and 5 m, stretched length
Weight:	approx. 765 g
Highest permitted speed:	250 kph
Dimensions (Ø x h):	131 mm x 160 mm
Approvals:	Light : E1-00491 EMC : e1-023610 Germanischer Lloyd (GL) : 12-021-98HH

#### Magnet-base version



#### Order numbers

with 3m of spiral cable  
002 263 401-651 (12V - blue)  
002 263 400-651 (12V - amber)

with 5m of spiral cable  
002 282 701-651 (12V - blue)  
002 282 700-651 (12V - amber)

Pintsch Bamag reserves the right to make technical changes.

### Technical data

Operating voltage:	12 V <sub>DC</sub>
Current consumption:	<5A
Lamp:	"H1" : 12V/55 W
Dome color:	blue, amber
Weight:	approx. 670 g
Dimensions (Ø x h):	131 mm x 195 mm
Approvals:	Light : E1-00491 EMC : e1-023610 Germanischer Lloyd (GL) : 12-021-98HH

### Tube Mounting



### Order numbers

002 263 101-651 (12V - blue)  
002 263 100-651 (12V - amber)

### Accessories

Assembly pipe for welding  
007 528 100-652

Threaded assembly pipe  
M25 x 1.5  
007 528 110-652 (1-pole)  
007 528 111-652 (2-pole)

Hinged foot  
(deflects in case branches struck)  
007 528 150-652

Pintsch Bamag reserves the right to make technical changes.

## Technical data

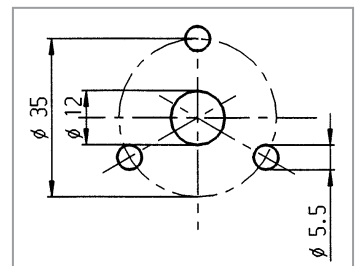
Operating voltage:	12 V <sub>DC</sub> and 24 V <sub>DC</sub>
Current consumption:	at 12 V <sub>DC</sub> : <5A at 24 V <sub>DC</sub> : <3A
Lamp: (lighting equipment not included in scope of supply)	"H1" : 12V/55 W or "H1" : 24V/70 W
Dome color:	blue, amber
Weight:	approx. 605 g
Dimensions (Ø x h):	131 mm x 163 mm
Approvals:	Light : E1-00491 EMC : e1-023610  Germanischer Lloyd (GL) : 12-021-98HH

3-hole assembly  
(35mm bolt pattern)



### Order numbers

002 263 201-651 (12V - blue)  
002 263 200-651 (12V - amber)  
002 282 607-653 (24V - amber)



Pintsch Bamag reserves the right  
to make technical changes.

## Technical data

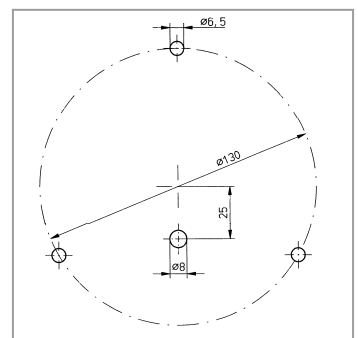
Operating voltage:	12 V <sub>DC</sub> and 24 V <sub>DC</sub>
Current consumption:	at 12 V <sub>DC</sub> : <5A at 24 V <sub>DC</sub> : <3A
Lamp: (lighting equipment not included in scope of supply)	"H1" : 12V/55 W or "H1" : 24V/70 W
Dome color:	blue, amber
Weight:	approx. 714 g
Dimensions (Ø x h):	131 mm x 170 mm
Approvals:	Light : E1-00491 EMC : e1-023610  Germanischer Lloyd (GL) : 12-021-98HH

3-hole assembly with adapter  
(130mm bolt pattern)



### Order numbers

002 274 301-651 (12V - blue)  
002 274 300-651 (12V - amber)  
002 282 507-653 (24V - amber)



Pintsch Bamag reserves the right  
to make technical changes.

