

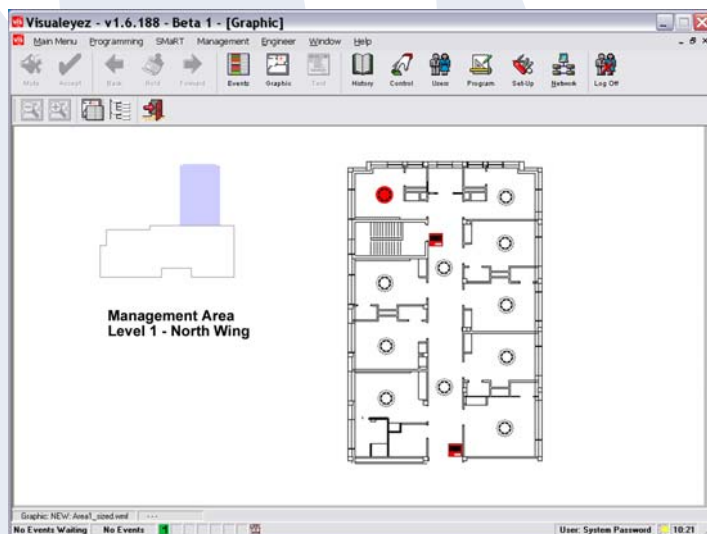
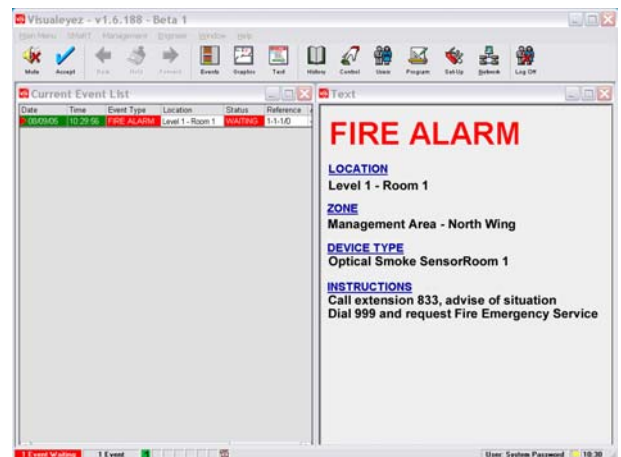
features

- Secure System.
- Multiple Users.
- Multiple Workstations.
- Picture, Schematic or Text Displays.
- Simple Navigation.
- Easy system Control.
- Comprehensive Event Log.
- In-Depth History Analysis.
- Integrates with ZX Series Control Panels.
- Windows™ XP, 2000 Compatible.

In an emergency, information and control are paramount. Without knowing what has occurred and where it happened it is difficult to provide effective resolution of the situation.

VisualeyeZ is designed to present information in a simple, clear and user friendly environment. Alarm information can be presented to users as both graphical and text instructions, allowing rapid comprehension of the situation.

Clear, concise information and instructions with optional control functions are available to manage the incident. (Visualise the situation.)



MORLEY  **IAS**
FIRE SYSTEMS
by Honeywell

Charles Avenue
Burgess Hill
West Sussex
RH15 9UF UK

T : +44 (0) 1444 23 55 56
F : +44 (0) 1444 25 44 10
E : sales@morleyias.co.uk
www.morley-ias.co.uk

visualeyez

Alarm Management System Data Sheet

Incident management is just one element. Document and audit the history of the system using the powerful comprehensive logging facilities. Classify each alarm according to it's nature – False alarm due to burnt toast, False alarm with good intentions, etc ... Utilise the built in classifications or create your own. Highlight areas that generate the highest number of alarms to improve your system's performance.

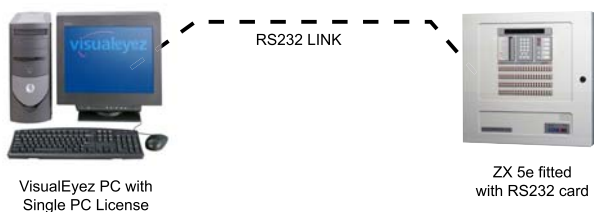
Time	Event/Alarm Type	Location	Reference	Classification	Serial No.
15:18:46	PANEL STATUS EVENT	Alarms Silenced	1-0-2/15		MTE-0000078
15:19:02	PANEL STATUS EVENT	Internal Buzzer Muted	1-0-1/15		MTE-0000079
15:20:15	DEVICE IN FAULT	bedroom 1	3-1-1/6		MTE-0000080
15:20:15	PANEL STATUS EVENT	Panel In Fault	3-0-6/15		MTE-0000081
15:21:20	DEVICE IN FAULT	bedroom 1	3-1-1/6		MTE-0000082
15:29:04	DEVICE IN FAULT	bedroom 1	3-1-1/6		MTE-0000083
15:30:13	FIRE ALARM	No Location phrase	3-1-1/9/0		MTE-0000084
15:31:23	DEVICE IN FAULT	bedroom 1	3-1-1/6		MTE-0000085
15:32:04	FIRE ALARM	mcp loop one	1-1-2/1/0		MTE-0000086
15:32:18	FIRE ALARM	No Location phrase	3-1-1/9/0		MTE-0000087
15:32:26	INPUT 2	plant rm	3-1-4/5		MTE-0000088
15:33:32	DEVICE IN FAULT	bedroom 1	3-1-1/6		MTE-0000089
15:33:33	DEVICE IN FAULT	Optical Detector	3-1-2/6		MTE-0000090
15:33:35	DEVICE IN FAULT	Optical Detector	3-1-3/6		MTE-0000091
15:33:36	DEVICE IN FAULT	Heat Detector	3-1-5/6		MTE-0000092
15:33:38	DEVICE IN FAULT	Optical Detector	3-1-1/2		MTE-0000093
15:34:31	PRE-ALARM	bedroom 1	1-0-9/15		MTE-0000094
16:18:25	PANEL STATUS EVENT	Master Panel Offline or Not Responding			
16:20:41	SYSTEM STATUS EVENT	Dongle Error	0-0-12/6		MTE-0000095

Date	Time	Event/Alarm Type	Location
25/07/05	15:29:04	DEVICE IN FAULT	bedroom 1
25/07/05	15:30:13	FIRE ALARM	No Location phrase
25/07/05	15:31:23	DEVICE IN FAULT	bedroom 1
25/07/05	15:32:04	FIRE ALARM	Optical Detector
25/07/05	15:32:18	FIRE ALARM	mcp loop one
25/07/05	15:32:26	INPUT 2	SOUTH
25/07/05	15:32:26	INPUT 2	Call Point
25/07/05	15:33:32	DEVICE IN FAULT	No Location phrase
25/07/05	15:33:32	DEVICE IN FAULT	plant rm
25/07/05	15:33:32	DEVICE IN FAULT	UO Unit
25/07/05	15:33:33	DEVICE IN FAULT	bedroom 1
25/07/05	15:33:35	DEVICE IN FAULT	Optical Detector
25/07/05	15:33:36	DEVICE IN FAULT	corridor os bed 1
25/07/05	15:33:38	DEVICE IN FAULT	Optical Detector
25/07/05	15:34:31	PRE-ALARM	plant rm
25/07/05	16:18:25	PANEL STATUS EVENT	Optical Detector
25/07/05	16:18:25	PANEL STATUS EVENT	bedroom 1
25/07/05	16:18:25	PANEL STATUS EVENT	Optical Detector
25/07/05	16:18:25	PANEL STATUS EVENT	Master Panel Offline or Not Responding
25/07/05	16:18:25	PANEL STATUS EVENT	Master Panel

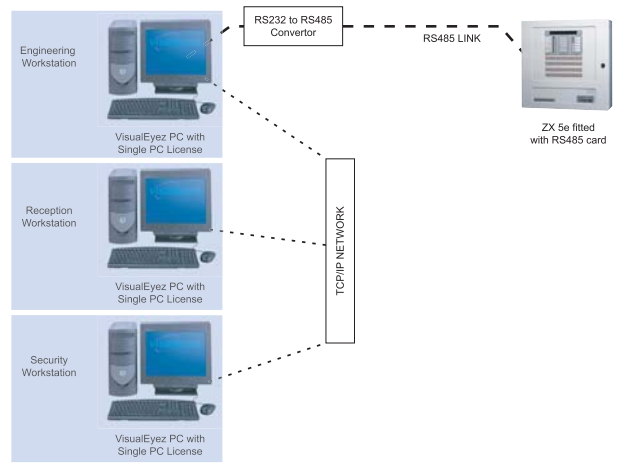
Visualeyez is an aid to help you manage your building. Configure the system to match your needs – Multiple authorised users, multiple workstations in different locations. It can be programmed to suit any application (or most applications) including : Hospitals, Universities, Prisons, Hotels, Commercial Buildings, Factories and Museums to name, but a few.

typical installations

Single Workstation



Multiple Workstations



minimum pc specification

- Processor : Intel Pentium or Equivalent, 2GHz.
- Memory : 512Mb Minimum.
- Disk Space : 20Gb Minimum.
- Graphics Card : 1024 x 768 (XGA), 16 Million colours.
- Monitor : XGA or higher, > 80Hz refresh rate.
- Sound Card : Windows compatible.
- Loudspeakers : Compatible with sound card and windows.
- Pointing Device : 2 button mouse.
- Keyboard : Required.
- Serial Ports : 1-6 (configuration dependent).
- Parallel Port : Required for Hardware key.
- Printer : Windows compatible (Optional).
- LAN Connection : 10/100 Mps (required for Multiple Workstations).
- CD ROM : Required for software installation, min 4x Read recommended.
- BackUp Device : Recommended.
- Operating System : Windows 2000 (SP4), XP Professional (SP2).

part numbers

795-088-100

Visualeyez (Basic Edition).

PC Based Mimic display. [For connection to a single panel]

795-088-200

Visualeyez (Standard Edition).

[For connection to a single network of up to 10 panels maximum, Single Workstation License only]

795-088-210

Visualeyez (Standard Edition + Groups).

[For connection to a single network of up to 10 panels maximum, Single Workstation License for Multiple Workstation System]

795-088-300

Visualeyez (Premium Edition).

[For connection to a single network of up to 99 panels maximum, Single Workstation License only]

795-088-310

Visualeyez (Premium Edition + Groups).

[For connection to a single network of up to 99 panels maximum, Single Workstation License for Multiple Workstation System]