

**MCD**

**1.5 ALU40 IZY**



# ALU40 IZY

## DESCRIPTION

The ALU 40 IZY only available in the front roll version, is made to measure with double-walled installable slats of extruded aluminium 40mm height.

As distinct from the standard Alu 40 door, the IZY version is delivered pre-assembled like a block which can be connected the tracks, to insert the whole shutter into the compartment. This system saves a considerable amount of mounting time (about 20 min of installation per shutter).



**WARNING**

To do this, the compartment must have a specific construction and precise dimensions as there is low tolerance (-0 to +3 mm).

The standard finish is in RAL 7035 satin finish powder coated gray, but can also be delivered in RAL 9010, anodized, mill or in another choice of RAL.

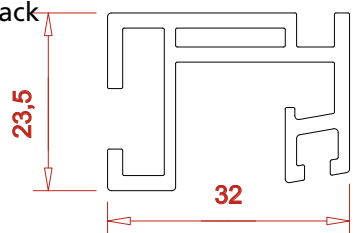
Different kinds of closing systems and options compatible with ALU40 IZY are available in the following chapters 3 and 4 of this documentation.



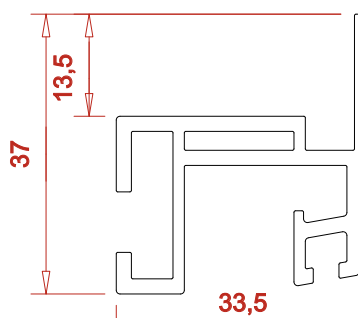
| Usage dimensions                 |                  |
|----------------------------------|------------------|
| Maximum height                   | 2200 mm          |
| Maximum width                    | 2500 mm          |
| Minimum width                    | 550 mm           |
| Maximum area                     | 4 m <sup>2</sup> |
| Door weight for 1 m <sup>2</sup> | 11 kg            |

### Two kinds of track available

#### IZY Standard track

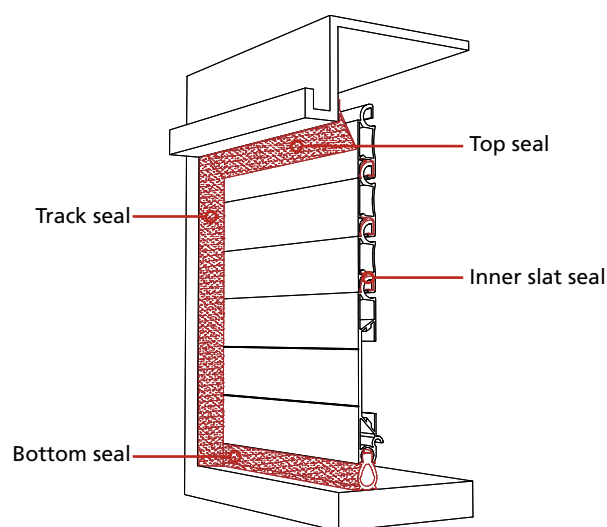


#### IZY Overlapping track(\*)

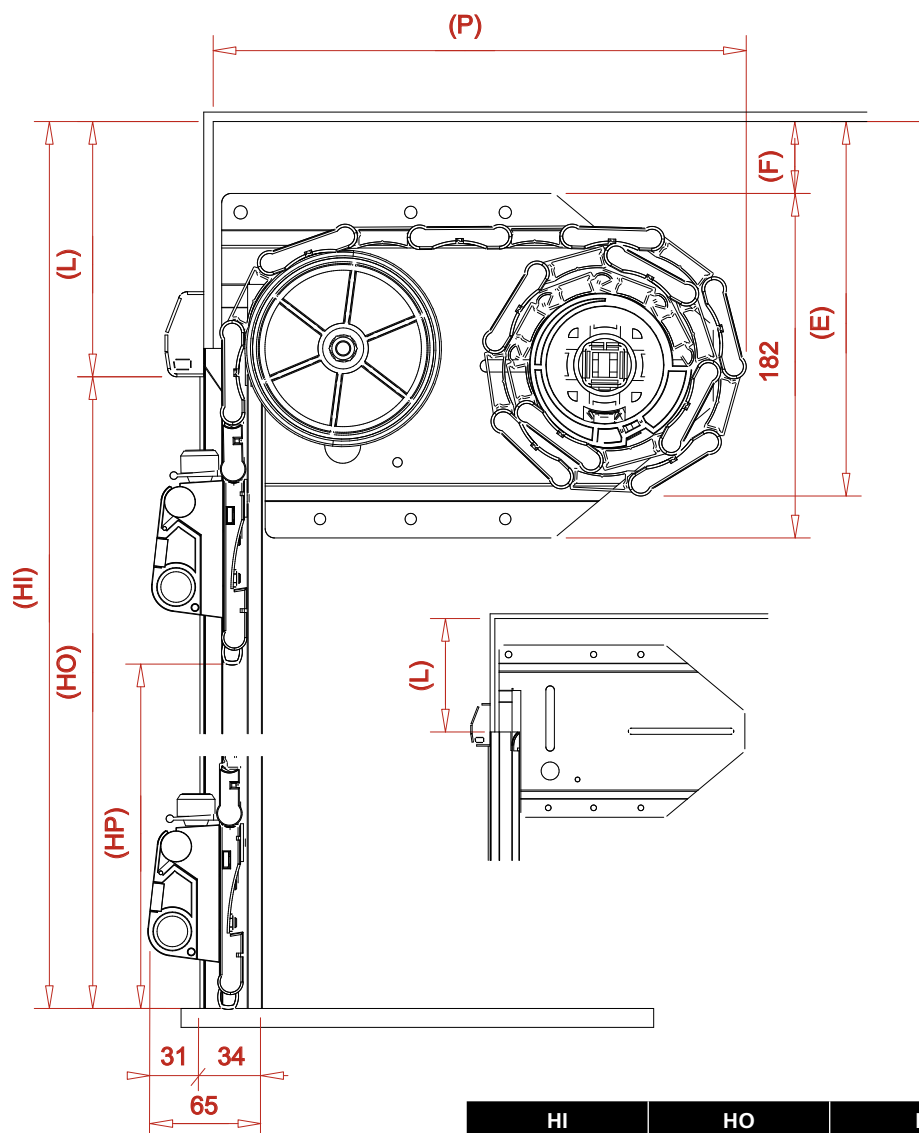


\* Warning : the header's thickness do not exceed 9 mm to use the overlapping track.

### Waterproof by 4 seals (Detail page 4.7.1)



# SETTING UP



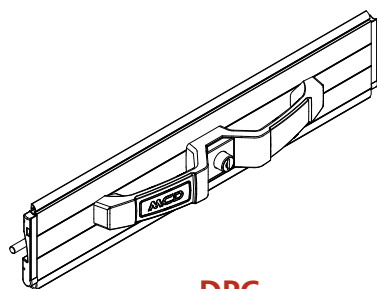
|     | Description     |
|-----|-----------------|
| HI  | Interior Height |
| HO  | Opening Height  |
| HP  | Passing Height  |
| L   | Header          |
| P   | Depth           |
| LP  | Passing Width   |
| LER | Total Width     |

### Formulae to remember:

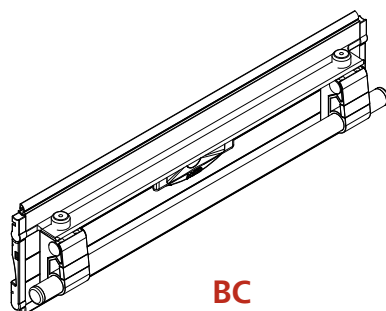
$HI = HO + L$   
 $HP = HO - 100 \text{ mm}$   
 $L \text{ minimum} = 75 \text{ mm}$   
 $LP = LER - 50 \text{ mm}$

| HI             | HO          | L      | P             | E             |
|----------------|-------------|--------|---------------|---------------|
| 500 to 2200 mm | HI - 100 mm | 100 mm | 280 to 320 mm | 170 to 220 mm |

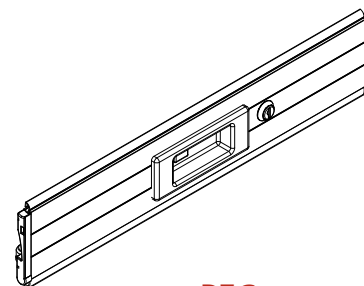
## Compatible closing systems with ALU40 IZY



**DPC**  
Double handle with key  
(see page 3.1.1)

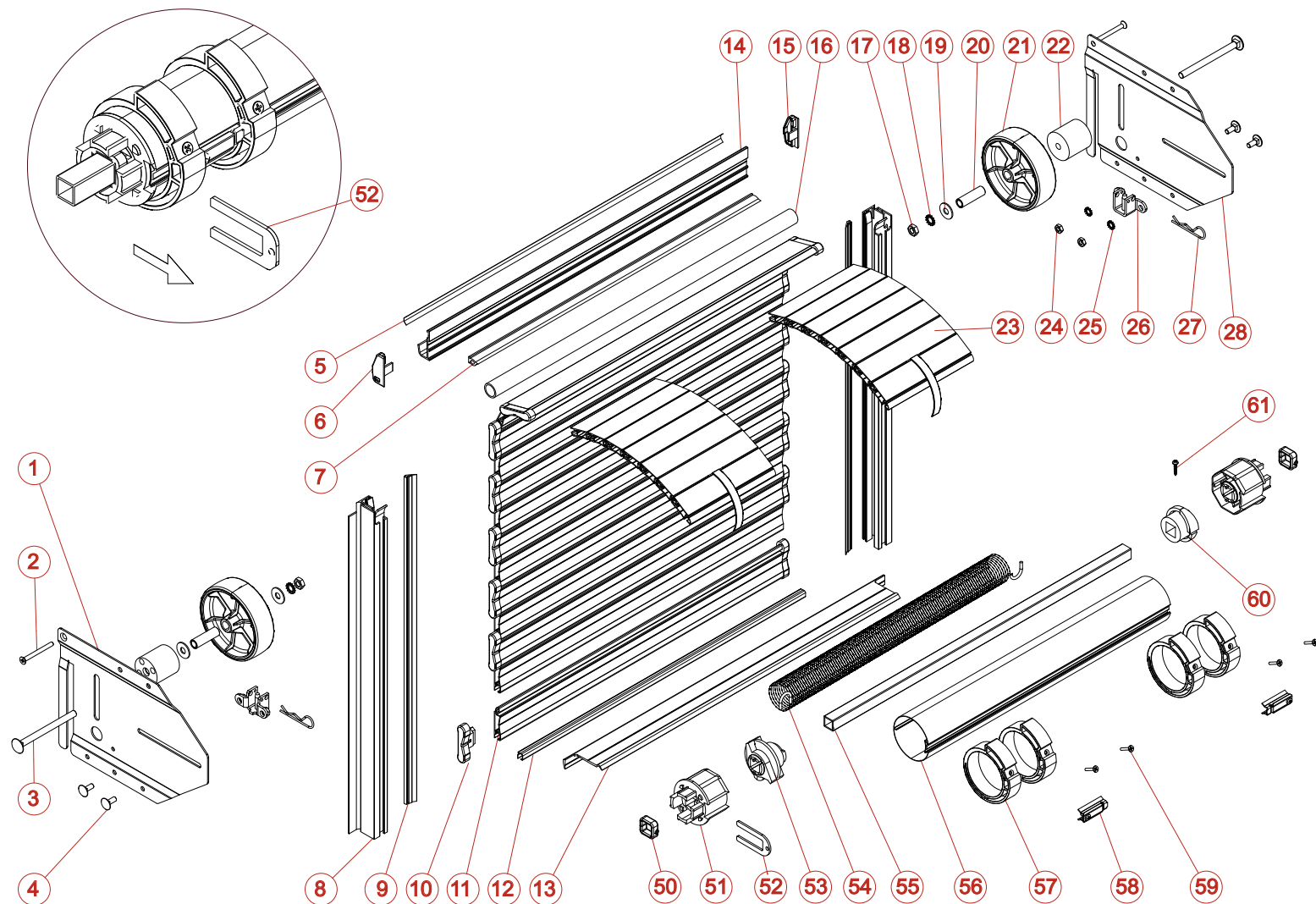


**BC**  
Bar lift handle with key  
(see page 3.2.1)



**PEC**  
Built-in handle with key  
(see page 3.3.1)

# EXPLODED VIEW ALU40 IZY



| REP | CODE | DESCRIPTION                    |
|-----|------|--------------------------------|
| 1   | 3141 | LEFT IZY 40 SIDE PANEL         |
| 2   | 3361 | SCREW TF POZIDRIV 5 X 50       |
| 3   | 3339 | STAINLESS SCREW TRCC M 8 X 100 |
| 4   | 3340 | STAINLESS SCREW TRCC M 6 X 16  |
| 5   | 2043 | DRIP CHANNEL PVC SEAL          |
| 6   | 4013 | DRIP CHANNEL LEFT CAP          |
| 7   | 2047 | TOP SEAL TA 17 (M)             |
| 8   | 1303 | IZY OVERLAPPING TRACK (M)      |
| 9   | 2023 | TRACK SEAL (M)                 |
| 10  | 4002 | SLAT LEFT CAP                  |
| 11  | 1004 | ABE SLAT 40 (M)                |
| 12  | 2004 | INNER SLAT SEAL (M)            |
| 13  | 1501 | SILL PLATE                     |
| 14  | 1600 | DRIP CHANNEL (M)               |
| 15  | 4012 | DRIP CHANNEL RIGHT CAP         |
| 16  | 1400 | ROUND ALUMINIUM TUBE (M)       |
| 17  | 3377 | ZINC-COATED NUT HU M 8         |
| 18  | 3243 | STAINLESS RING AZ 8            |
| 19  | 3505 | ZINC-COATED RING L 8           |
| 20  | 3109 | STEEL SPACER                   |

| REP | CODE | DESCRIPTION                                 |
|-----|------|---|
| 21  | 4114 | WHEEL 100 DIA                               |
| 22  | 4107 | PLASTIC SPACER                              |
| 23  | 8137 | LOOPS GUIDE ALU40                           |
| 24  | 3353 | STAINLESS NUT HU M 6                        |
| 25  | 3331 | STAINLESS RING AZ 6                         |
| 26  | 3139 | ROLLER SUPPORT                              |
| 27  | 3371 | STAINLESS BETA PIN 2.5                      |
| 28  | 3142 | RIGHT IZY 40 SIDE PANEL                     |
| 50  | 3163 | STIRRUP                                     |
| 51  | 4100 | TERMINAL CAP FOR TUBE 62                    |
| 52  | 3108 | BLOCKING FORK                               |
| 53  | 4102 | MOBILE ROLLER SPRING ATTACHMENT FOR TUBE 62 |
| 54  |      | SPRING                                      |
| 55  | 3100 | STEEL TUBE 16 X 16 X 1.5 (M)                |
| 56  | 3102 | ROUND TUBE 62 (M)                           |
| 57  | 4108 | ROLLER RING 62                              |
| 58  | 3106 | ROLLER CLIP DIAM 62                         |
| 59  | 3327 | SCREW TF POZIDRIV Z 4 X 18                  |
| 60  | 4104 | FIXED ROLLER SPRING ATTACHMENT FOR TUBE 62  |
| 61  | 3309 | STAINLESS SCREW TCL POZIDRIV 3.9 X 19       |

Elements list and exploded view of closing system are introduced in the chapter 3 of this documentation.