

MCD

1.4 ALU30 IZY



ALU30 IZY

DESCRIPTION

The ALU 30 IZY only available in the front roll version, is made to measure with double-walled installable slats of extruded aluminium 30mm height.

As distinct from the standard Alu 30 door, the IZY version is delivered pre-assembled like a block which can be connected to the tracks, to insert the whole shutter into the compartment. This system saves a considerable amount of mounting time (about 20 min of installation per shutter).

WARNING

To do this, the compartment must have a specific construction and precise dimensions as there is low tolerance (-0 to +3 mm).

The standard finish is in RAL 7035 satin finish powder coated grey, but can also be delivered in RAL 9010, anodized, mill or in another choice of RAL.

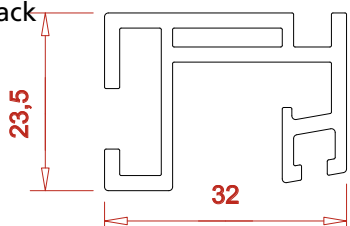
Different kinds of closing systems and options compatible with ALU30 IZY are available in the following chapters 3 and 4 of this documentation.



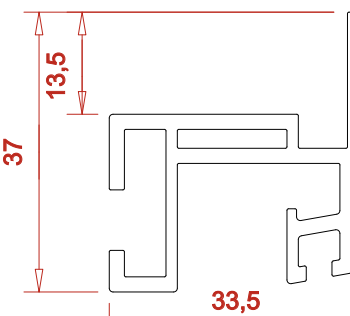
Usage dimensions	
Maximum height	2200 mm
Maximum width	2500 mm
Minimum width	550 mm
Maximum area	4 m ²
Door weight for 1 m ²	12 kg

Two kinds of track available

IZY Standard track

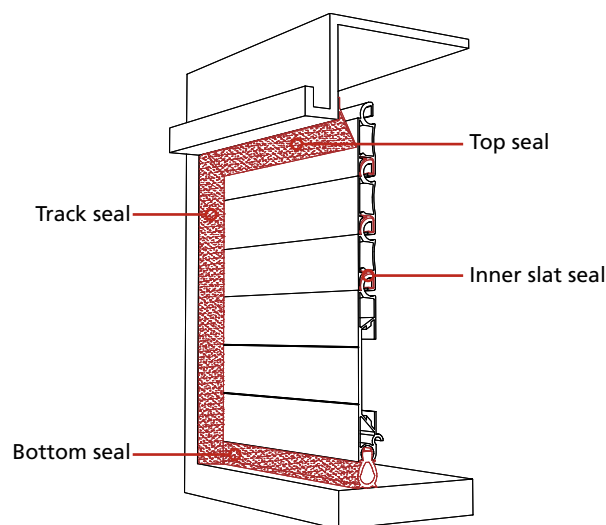


IZY Overlapping track(*)

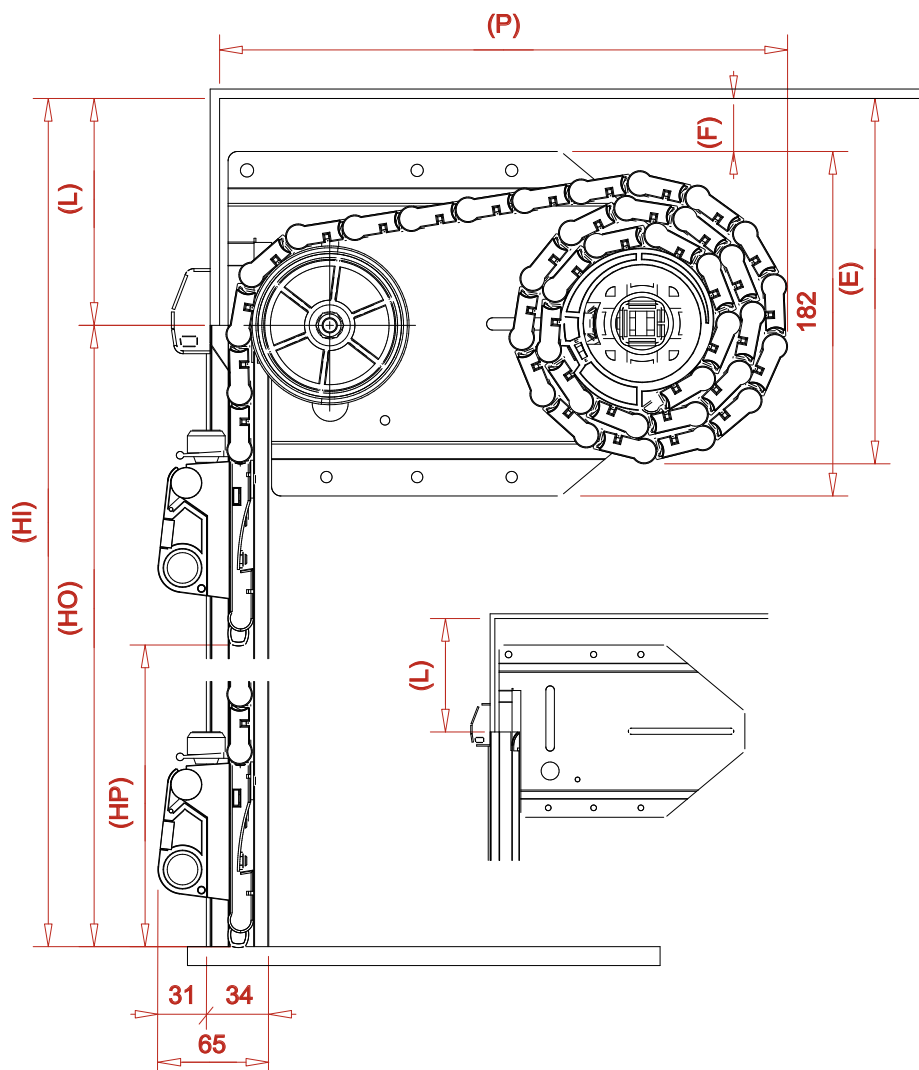


* Warning : the header's thickness do not exceed 9 mm to use the overlapping track.

Waterproof with 4 seals (Detail page 4.7.1)



SETTING UP



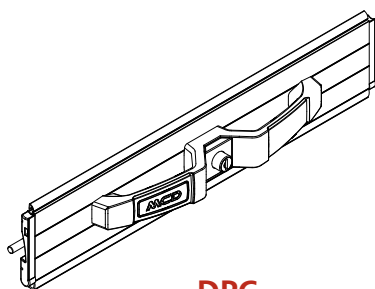
	Description
HI	Interior Height
HO	Opening Height
HP	Passing Height
L	Header
P	Depth
LP	Passing Width
LER	Total Width

Formulae to remember:

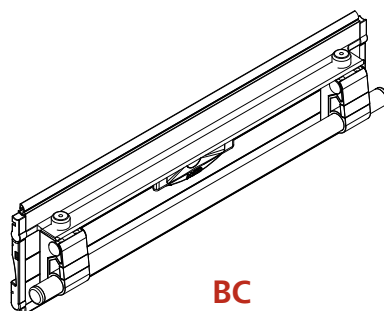
$HI = HO + L$
 $HP = HO - 100 \text{ mm}$
 $L \text{ minimum} = 75 \text{ mm}$
 $LP = LER - 50 \text{ mm}$

HI	HO	L	P	E
500 to 2200 mm	HI - 100 mm	100 mm	280 to 320 mm	170 to 220 mm

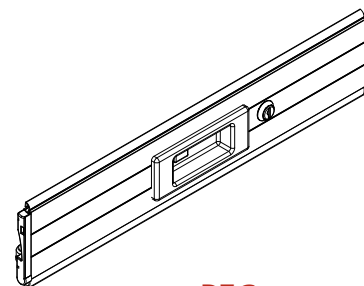
Compatible closing systems with ALU30 IZY



DPC
Double handle with key
(see page 3.1.1)

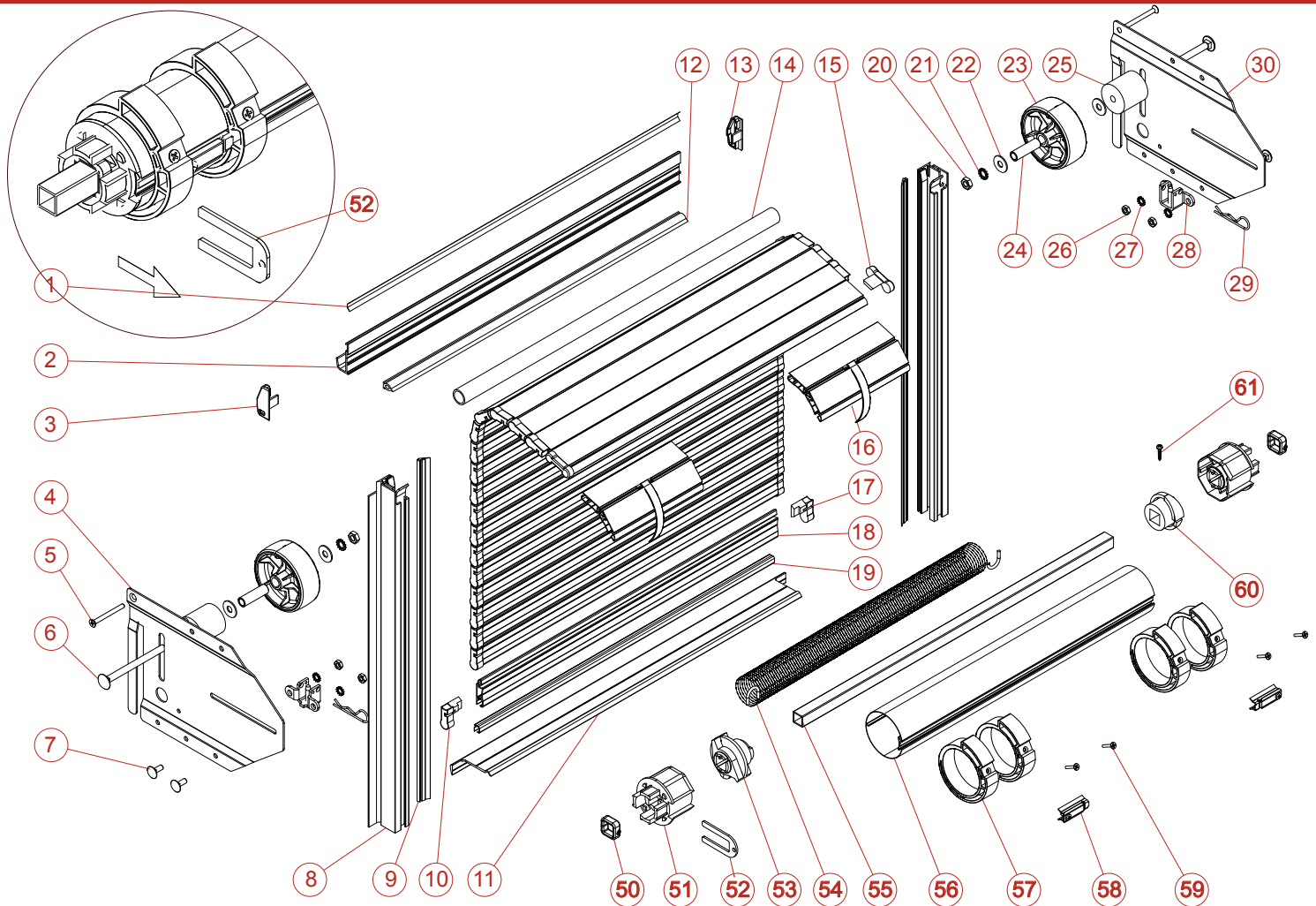


BC
Bar lift handle with key
(see page 3.2.1)



PEC
Built-in handle with key
(see page 3.3.1)

EXPLODED VIEW ALU30 IZY



REP	CODE	DESCRIPTION
1	2043	DRIP CHANNEL PVC SEAL
2	1600	DRIP CHANNEL (M)
3	4013	DRIP CHANNEL LEFT CAP
4	3130	LEFT IZY 30 SIDE PANEL
5	3361	SCREW TF POZIDRIV 5 X 50
6	3339	STAINLESS SCREW TRCC M 8 X 100
7	3340	STAINLESS SCREW TRCC M 6 X 16
8	1303	IZY OVERLAPPING TRACK (M)
9	2023	TRACK SEAL (M)
10	4002	SLAT LEFT CAP
11	1501	SILL PLATE
12	2047	TOP SEAL TA 17 (M)
13	4012	DRIP CHANNEL RIGHT CAP
14	1400	ROUND ALUMINIUM TUBE (M)
15	4004	SLAT SPECIAL CAP
16	8114	LOOPS GUIDE
17	4003	SLAT RIGHT CAP
18	1001	ABE SLAT 30 (M)
19	2004	INNER SLAT SEAL (M)
20	3242	STAINLESS NUT HU M 8
21	3243	STAINLESS RING AZ 8

REP	CODE	DESCRIPTION
22	3301	STAINLESS RING L 8
23	4110	WHEEL 80 DIA
24	3109	STEEL SPACER
25	4107	PLASTIC SPACER
26	3353	STAINLESS NUT HU M 6
27	3331	STAINLESS RING AZ 6
28	3139	ROLLER SUPPORT
29	3371	STAINLESS BETA PIN 2.5
30	3131	RIGHT IZY 30 SLIDE PANEL
50	3163	STIRRUP
51	4100	TERMINAL CAP FOR TUBE 62
52	3108	BLOCKING FORK
53	4102	MOBILE ROLLER SPRING ATTACHMENT FOR TUBE 62
54		SPRING
55	3100	STEEL TUBE 16 X 16 X 1.5 (M)
56	3102	ROUND TUBE 62 (M)
57	4108	ROLLER RING 62
58	3106	ROLLER CLIP DIAM 62
59	3327	SCREW TF POZIDRIV Z 4 X 18
60	4104	FIXED ROLLER SPRING ATTACHMENT FOR TUBE 62
61	3309	STAINLESS SCREW TCL POZIDRIV 3.9 X 19

Elements list and exploded view of closing systems are introduced in the chapter 3 of this documentation.