

TURNTABLE LADDER DLK 37 CS

TURNTABLE LADDER



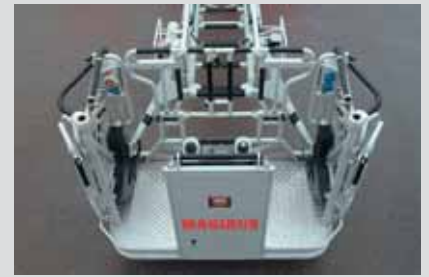
**IVECO
MAGIRUS**



For stretcher support (KTL) the left-hand or right-hand multi-function column can be used, depending on actual requirements. Alternatively with continuous brake and 150 kg payload.



The cage monitor with 2000 l/min output has a continuously adjustable hollow and spray jet nozzle (optional).



Two separate cage entrances with doors opening and folding sideways and safety bar for free access. Important for PA operators.



Our new "Workplace Model": More innovation, more function, more convenience, more performance



The new Magirus 3-person rescue cage RK 270 CS features a large number of practical innovations:

- ▶ Two multi-function columns respectively located at the side of the cage
- ▶ Control panel in the centre of the cage
- ▶ Four power sockets (1x 380V, 3 x 220V)

▶ Searchlight integrated into the cage front (optional)
For stretcher support (KTL) the left-hand or right-hand multi-function column can be used, depending on actual requirements. Alternatively a stretcher support with continuous brake and 150 kg payload can be used for this purpose.

The cage monitor with 2000 l/min output and continuously adjustable hollow and spray jet nozzle (optional).

Two separate cage entrances with doors opening and folding sideways and safety bar provide for free access.

THE ONLY TURNTABLE LADDER WITH A UNIVERSITY DIPLOMA!

ACTIVE MAGIRUS
VIBRATION ABSORPTION
MORE SAFETY
MORE FUNCTIONS
MORE COMFORT

With our new Magirus DLK 37 CS, we have developed a turntable ladder offering a number of unique and innovative new features.



The advantages of the new DLK 37 CS at a glance:

- ▶ Unique vibration damping system Magirus CS (**Computer Stabilized**). All turntable ladder movements are immediately detected by the computer as soon as they occur, and then actively damped in fractions of a second by means of pre-calculated computation models. This also applies to wind gusts or vibrations due to the application situation (e.g. person jumps into the cage).
- ▶ New electronic monitoring system for the entire ladder (CANBUS) with loadable menu programs for special customer requests as well as remote diagnosis and service information. GPS and SMS as an optional.
- ▶ Platform superstructure built with the AluFire system, complete with integrated work area lighting (optional), safety steps at the centre and the rear of the vehicle, as well as 4 m³ equipment lockers volume.
- ▶ Torsion-proof substructure for optimum stability.
- ▶ Stainless steel profiles for the ladder guides guarantee a corrosion-free ladder extension.
- ▶ Cathodic full immersion painting at 180°C for substructure, ladder set, and cage guarantee maximum corrosion protection against environmental influences.
- ▶ Completely new, modular structure, 5-section ladder set with laser-welded spar profiles made of high tensile fine grain steels.
- ▶ Clear improvement of the operation range (rescue range)
 - underfloor from - 12° to - 17°
 - elevation angle from 73° to 75°
 - levelling compensation from 7° to 10°



- Ergonomically formed weather-proof seat
- Automatically adjustable seat inclination
- Multi-functional joysticks for controlling the ladder



Depending on requirements, the operator can change the inclination angle of the display housing and adapt the same to his/her requirements.



The full colour control display: plain text view for all ladder functions and status messages, full colour movement diagrams, and logical pictograms for easy handling. Slide-open cover protects against weather and damage.



Options for individual requirements:

- ▶ raised podium locker
- ▶ side panelling between cab and superstructure
- ▶ panel at raised podium locker
- ▶ panelling at ladder set
- ▶ rear panel made of GRP with integrated surrounding lights (instead of aluminium)
- ▶ work area lighting
- ▶ various possibilities to varnish and mark cab and platform



The advantages of the new DLK 37 CS at a glance:

- ▶ **More safety** for operators and persons to be rescued
- ▶ **More convenience:**
Increased material locker volume
Ergonomical control panel
New 3 person rescue cage
- ▶ **More performance:**
Shorter rescue times due to increased ladder movement speeds
35 cm more jacking width provide for 1,0 m additional outreach

▶ **Compact vehicle with maximum technology concentration:**

Width: 246 cm,
Height: 340 cm,
Length: 970 cm.

▶ **working height 39 m**
▶ **simultaneous lift and cage operation**

▶ **An excellent vehicle handling,** due to the ergonomic superstructure design and a unique smoothness of the engine when operating the ladder, characterize furthermore the new DLK 37 CS.

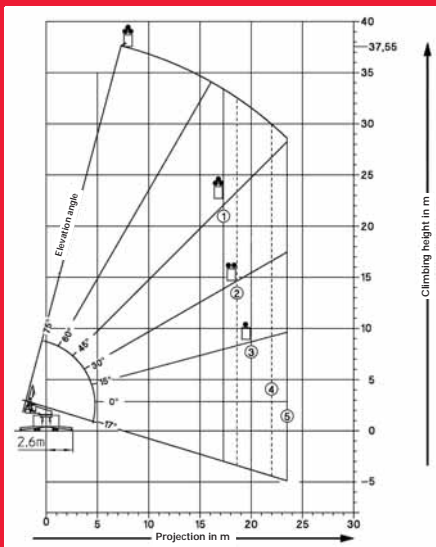
- ▶ Clearly designed jacking control panel with ergonomically formed joystick (suitable for use with gloves), integrated into the rear of the vehicle with full protection against the weather.
- ▶ Alternatively permanent installed telescopic water pipe routing into the ladder set with rear feed-in.
- ▶ Individually fitted supports for units and devices on the turntable (e.g. power generator, blower, swivelling monitor).
- ▶ Midship pump (optional).

As optional also available with lift.



TECHNICAL DATA

Diagram DLK 37 CS



TURNTABLE LADDER DLK 37 CS

The new Magirus DLK value added formula:
35 cm more jacking width + CS = 100 cm more
outreach for the 3-person rescue cage!

IVECO MAGIRUS
BRANDSCHUTZTECHNIK GMBH
MAGIRUSSTRASSE 16
D-89077 ULM
FAX 07 31/4 08-24 10

E-Mail: magirus@iveco.com
www.iveco-magirus.de

IVECO MAGIRUS
BRANDSCHUTZTECHNIK GMBH
C.-D.-MAGIRUS-STRASSE 20
D-79367 WEISWEIL
FAX 076 46/899-50

BRANDSCHUTZTECHNIK
GÖRLITZ GMBH
DR.-KAHLBAUM-ALLEE 15
D-02826 GÖRLITZ
FAX 035 81/654-180

LOHR MAGIRUS
FEUERWEHRTECHNIK GMBH
HÖNIGTALER STRASSE 46
A-8301 KAINBACH/GRAZ
FAX + 43 31 33/20 77-31

www.lohr-magirus.at

IVECO MEZZI SPECIALI SPA.
VIA S. POLO 31
I-25124 BRESCIA
FAX + 39 (0) 30/23 93-2 68

CAMIVA S.A.
689, AVENUE DE CHAMBERY
F-73230 SAINT-ALBAN-LEYSSE
FAX + 33 479/70 54 40

www.camiva.com

The vehicles shown here comprise additional or special requests by customers that are not within the basic scope of supply. We reserve the right to carry out modifications and improvements at any time without prior notice. The information presented here may be subject to errors.

PRINTED IN GERMANY 05 / 05 (MA)