

Morning Pride® EDGE Turnout Gear

Honeywell



Proven Performance  
and Reliability



**MORNING PRIDE**

by Honeywell



**MORNING PRIDE**

by Honeywell

**PROVEN  
PERFORMANCE  
AND RELIABILITY**

**ADVANCED DESIGN  
MEETS CLASSIC  
STYLING.**

DESIGNED WITH AMPLE  
DISPLACEMENT FOR  
ALL-AROUND  
**MOBILITY,  
COMFORT, AND  
PERFORMANCE.**





MORNING PRIDE® EDGE IS MADE FOR THE FIREFIGHTER WHO WANTS THE LATEST TECHNOLOGY, YET WISHES TO KEEP A TRADITIONAL CUT. PROVEN AND VERSATILE IN ALL ENVIRONMENTS, EDGE DELIVERS THE HIGH LEVEL OF PERFORMANCE YOU NEED TO DEPEND ON.

# EDGE AT A GLANCE

## Available Coat and Pant Closure Systems

- All paired with hook and loop
- Zipper under flap
  - Hooks and dees inside flap



**Flex-back Pleats**  
Allow better movement and reach

**Underarm Gussets in All Three Layers**

- Maximize comfort
- Minimize coat rise

**Stand-up Collar and Linkable Throat Tab**  
Allow fast donning

**Bar-tack Reinforced Stress Points**  
For maximum durability

**Ergonomically Curved Two-piece Arm Design**  
Follows the line of the arm for effortless movement

**Full-cut Body Design**  
For great all-around comfort

**Full-bellows Coat Pockets (9" x 9")**  
For ample capacity

**Uninterrupted Zip-in Liner**

- Eliminates gaps in thermal protection
- Prevents detachment of liner
- Is easily removed for washing or decontamination



**Side Adjustment Pull-tabs in Tough and Durable Nomex® Webbing**  
Waist adjustment of 4" to 6" provides a better, tailored fit

**Button Suspenders**

**Internal Adjustable Belt System**

- Offers flexible adjustability without bulk
- Allows waist size to adjust up to 4"
- Does not interfere with an SCBA belt

**Uninterrupted Zip-in Liner**

- Eliminates gaps in thermal protection
- Prevents detachment of liner
- Is easily removable for washing or decontamination

**Full-bellows Pant Pocket (10" x 10")**  
For ample capacity

**Choice of Oversized Knee and Cuff Reinforcements**  
Customizable to your needs, for enhanced protection

**Offset Seams Between Each Layer**  
**Reduce Abrasion**  
Seams on all three layers are offset to prevent abrasion and increase comfort

**DuPont™ Nomex®** | **DuPont™ Kevlar®**

DuPont™ Nomex® and Kevlar® are trademarks or registered trademarks of E.I. du Pont de Nemours and Company.

## Continuous Zip-in Liner Provides **Uninterrupted Protection**



Gaps between the outer shell and inner liner can leave a firefighter with only one layer of protection, exposing the wearer to an increased risk of thermal injury.

EDGE utilizes an engineered zipper system to attach the outer shell to the moisture barrier and thermal liner, completely eliminating the risk of gaps between the outer shell and the thermal liner frequently found in snap-in liner systems.

### ZIP-IN LINER FEATURES

- Eliminates gaps in thermal protection
- Prevents detachment of liner
- Easily removed for washing or decontamination
- Liner overlap design delivers enhanced comfort

## In-collar DRD™ Proprietary Design **Allows Easy Access** Even with a Gloved Hand



Designed to aid in the rescue of an incapacitated or injured wearer, the Drag Rescue Device (DRD) is a critical safety component of any turnout jacket. EDGE offers the only in-collar DRD on the market. This proprietary design places the DRD access port in the collar instead of further down the back of the jacket, ensuring clear visibility and easy access – even when the downed firefighter wears a breathing apparatus.

### IN-COLLAR DRD FEATURES

- Reflective lettering for high visibility in low light conditions
- Flexible Kevlar® webbing for strength and comfort
- Unique, non-removable design prevents loss and improper installation
- Performance exceeds NFPA 1971

## Articulating DRD Designed to **Evenly Distribute the Weight**



The Morning Pride® patented Articulating Drag Rescue Device is unlike any other DRD on the market.

The articulating nature of this design means that both underarms are engaged when the rescuer must pull from an angle. In contrast, non-articulating designs will only pull on both underarm areas if the rescuer can make a straight pull. Engaging both sides of the downed firefighter should help minimize the chance of pulling the coat off or failing to gain effective leverage on the victim.

DuPont™  
**Kevlar®**

DuPont™ and Kevlar® are trademarks or registered trademarks of E.I. du Pont de Nemours and Company.

# INNOVATIVE FEATURES

TES™ (Thermal Enhancement System)  
**Creates Extra Thermal Protection**  
 Without Adding Bulk

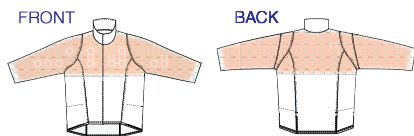


The TES™ (thermal enhancement system) design dramatically increases TPP (thermal protective performance) with no significant impact on THL (total heat loss). This means extra protection without added bulk.

TES™ consists of a layer of Nomex® mesh engineered into the garment design on the upper torso and arms – all areas typically exposed to compression and the highest thermal load.

**TES™ Advantages**

- Superior protection of the entire upper torso and arms when compared to other thermal enhancement systems
- Increased thermal protection with no significant impact on THL



Flex-back Pleats  
**Allow Maximum Movement and Reach**



Dynamic Flex-Back Pleat was designed to allow the sleeve to expand freely in order to increase the reach and movement in the arms without adding fabric bulk. This construction is replicated in the thermal liner and moisture barrier, thus fully optimizing the Flex-Back design benefits.

In addition to the Dynamic Flex-Back Pleat, EDGE features underarm gussets in all three Layers, offering optimal comfort and minimum coat rise. A perfect fit!

Dead Air Panels  
**Provide Lightweight, Non-restrictive Insulation**



Using X-9 engineered thermal padding, dead air panels, found only in Morning Pride® garments, increases conductive compressive heat resistance (CCHR) in critical areas significantly higher than the NFPA standard. No other system combines such results with a lightweight, highly vapor-permeable design, and the low cost found in Morning Pride® dead air panels.

**MORE THAN 2x**  
**THE NFPA MINIMUM PROTECTION REQUIREMENT**

## Hybrid Wristlet Increases Comfort and Dexterity of the Hand



The hybrid wristlet helps create additional comfort for the firefighter and will not get in the way of movement. This wristlet is attached to the waterwell that is then attached to the outer shell.

Thanks to this design exclusive to Morning Pride® EDGE gear, you won't have to worry about contaminated water running down your sleeves from your waterwells when you raise your arms. You stay safe and dry!

## Dyna-Fit "Rig Friendly" Removeable Suspenders Hold Pants Securely



These patented suspenders have no mid-back hardware and comfortably stay in place because of an interplay of the suspender loops. They feature rig-friendly snap attachments (instead of buttons) preventing suspender rotation when the pants are being donned.

## Internal Adjustable Belt System Improves Comfort and Adjustability



What is the most inconvenient part of a belt on your turnout gear pants? For many it's the buckle: it can be bulky, it doesn't offer the adjustability you're looking for and often enough it's uncomfortable when moving.

Morning Pride® EDGE offers a unique Internal Adjustable Belt System that integrates an elasticized belt in the back of the pants, between the thermal liner and the outer shell. The belt is secured with loops and allows you to adjust your waist size up to 4 inches. The best part...it's comfortable, expandable and removable. With the Internal Adjustable Belt System, you control the fit of your waist!

# MORE OPTIONS MORE CUSTOMIZATION



# HIGH-PERFORMANCE OPTIONAL FEATURES



# CERTIFIED BELTS AND HARNESSES

UL classified to NFPA 1983, current edition  
Components UL classified to NFPA 1971, current edition



Shown with external leg loops



Shown with internal leg loops



## SPIDER™ HARNESS

### Integrated Class II safety and rescue harness with A-frame

- Built-in two-inch increments for even waist sizes 32-inch and above
- Compatible with internal or external leg loop configurations
- Integrated pant also accepts Patriot Harness and Life Grip Belt
- Extra stable A-frame stows on waist belt for bailout and ladder work
- Separate sliding D-ring on the A-frame for bailout system pre-connect

## PATRIOT™ HARNESS

### Integrated Class II safety and rescue harness

- Built-in two-inch increments for even waist sizes 32-inch and above
- Compatible with internal or external leg loop configurations
- Integrated pant also accepts Spider Harness and Life Grip Belt
- Separate sliding D-ring for bailout system pre-connect
- Optional tether stows at waist for use with ladder hook

## LIFE GRIP™ LADDER/ ESCAPE BELT

### Functional and fully adjustable escape belt

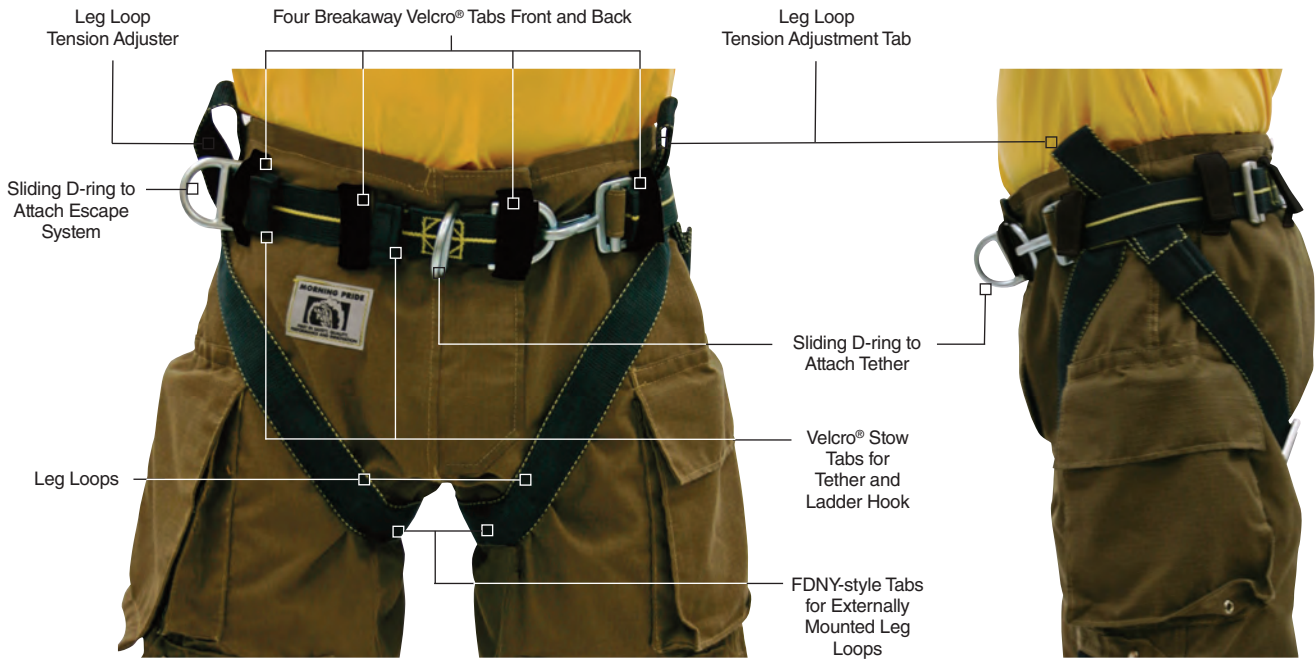
- Built-in two-inch increments for all even-waist-size bunker pants
- The most economical yet fully featured ladder/escape belt
- Separate sliding D-ring for bailout system pre-connect
- Use with integrated pant adaptation or simple belt loops
- Optional tether stows at waist for use with ladder hook

# INTEGRATED HARNESS PANT SYSTEM

Parallel engineered for seamless compatibility  
Constructed of 100% DuPont Kevlar® webbing and thread

## PANT WITH EXTERNAL LOOPS

Easy to inspect, remove and install  
(Patriot Harness shown)



## PANT WITH INTERNAL LOOPS

Protected from UV and abrasion  
(Patriot Harness shown)



Carabiner not included.

# DESIGNED TO WORK IN UNISON

## Intuitive Leg Adjustments

- Just grab and pull to tighten
- Thumb the adjuster hardware to loosen (internal or external)



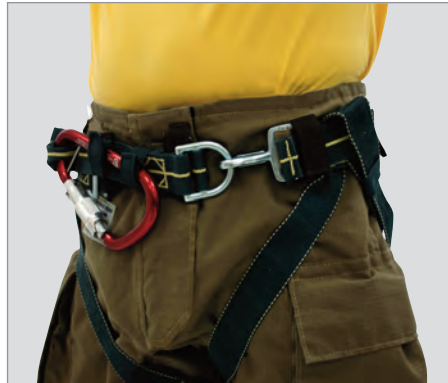
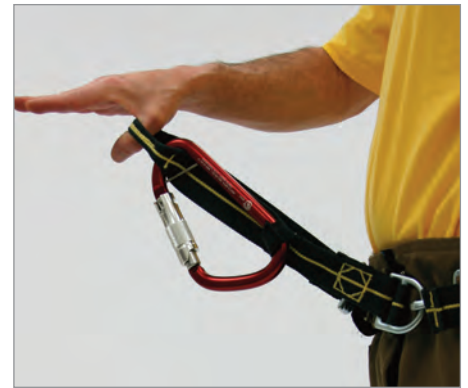
## Integrated Closure

- Simply zip and clip
- Harness closure and pant closure become one
- Donning and doffing are almost unaffected, requiring a short learning curve



## Built-in Spider™ Harness A-frame

- Optional ladder hook stows in A-frame when not in use
- Separate sliding D-ring for escape system pre-connect



ALL LEG LOOPS, CLOSURES AND A-FRAMES  
ARE **INTUITIVELY ADJUSTABLE**

ALL HARDWARE IS IN HOT-FORGED ALLOY  
STEEL FOR **COMPLETE SAFETY**

## Heat-channel Knee



Enhanced thermal protection in the knee area is critical. The proprietary Heat-channel Knee offers three to four times the NFPA minimum level requirement, providing you with maximized thermal and compressive protection, while the unique flexible design offers added comfort and mobility.

## BiFlex Heat-channel Knee



The BiFlex Heat-channel Knee utilizes additional lateral panels for even greater flexibility, maximizing comfort and protection with unparalleled conductive and compressive heat resistance (CCHR). It provides five layers of protection in the primary kneeling area and reduced layering for less centered areas.

## 3D BiFlex Heat-channel Knee



With a combination of concave and convex seams, the 3D BiFlex Heat-channel Knee creates a three-dimensional shape that enhances mobility while making room for removable knee pads. This knee allows fire departments to provide varying levels of protection that are job specific. Waterproof knee pads are available in aramid and moisture barrier or 1/4" silicone foam padding (patent pending).

# Options – Coat

## Wristlets



Nomex® knit 3¼" long with neoprene waterwell

Nomex® knit with 6" thumb hole and neoprene waterwell

## Reinforcements



Sleeve cuffs, double stitched

Elbow patches 8" x 6"

Shoulder patches

## Pockets

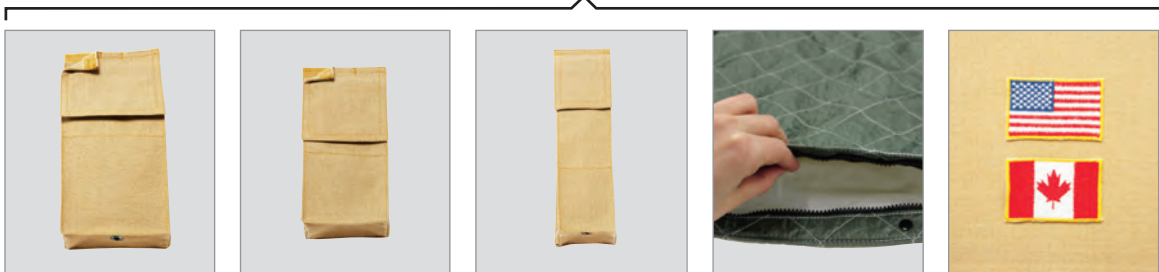


Semi-bellows pocket 9" x 9"

Pocket reinforced with Kevlar® pouch

Hand warmer pocket 9" x 9" full bellows

## Device Pockets & Accessories



Large radio pocket 9" x 4½" x 2" with antenna port

Small radio pocket 7½" x 3½" x 2" with antenna port

2- or 3-cell flashlight pocket

Inspection port on thermal liner of coat and pant

American or Canadian flag



Microphone loop in webbing 1" x 2½"

Flashlight loop 2" x 2" with utility strap in webbing 1" x 12"

Glove holder in webbing 1" x 12"

Accessory hook on Hypalon® patch 3" x 2"

Accessory dee on Hypalon® patch 3" x 2"

# Options – Pant

## Suspenders



Removable suspenders, side quick-release buckle

Removable suspenders, New England style

Add 2" 3M™ Scotchlite™ triple trim

Add advanced foam technology padding for suspenders

## Accessories



Waterdams

Knee patches

Reverse boot cut

Angled cuffs

## Thermal Enhancements



Thermal Enhancement System (TES)

Dead air panels

Yoke padding (7" high): extra thermal layer

Knee pads: extra thermal layers

I-Tech Insertable Knee System



DuPont™ Nomex® and Kevlar® are trademarks or registered trademarks of E.I. du Pont de Nemours and Company.

# Trim and Lettering Options

## Trim Material



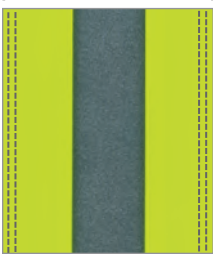
3" two-tone Reflexite® Brilliance

3" and 2" Reflexite® Brilliance

3" orange or lime two-tone 3M™ Scotchlite™

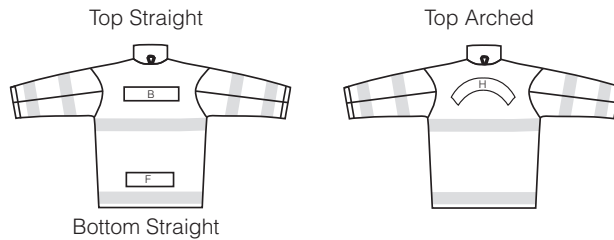
3" and 2" solid orange or lime 3M™ Scotchlite™

## Trim Stitching



Double stitch on reflective trim

## Name Patch Common Positioning



Bottom Straight

## Name Patches

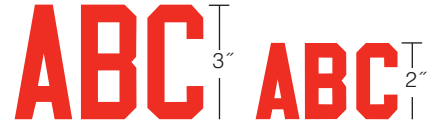


Permanent patches: 3 lengths

Removable patches: 2 lengths

Hanging name patch 4" x 19"

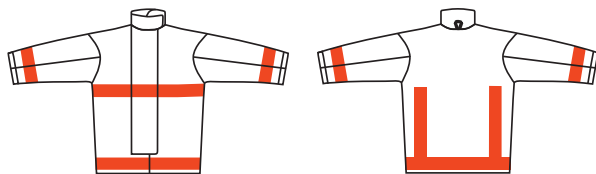
## Lettering



2" or 3" sewn-on 3M™ Scotchlite™ solid orange, lime, or silver. 2" or 3" heat-set 3M™ Scotchlite™ solid orange or lime. 2" or 3" sewn-on Reflexite® solid lime and orange or Reflexite® Brilliance.

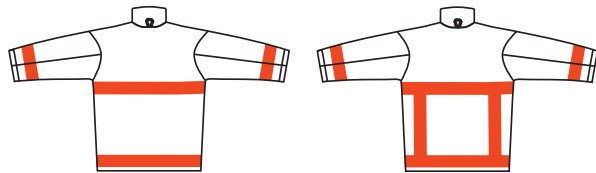
## Trim Configurations

### Standard – 2" or 3"



NFPA Standard – Front

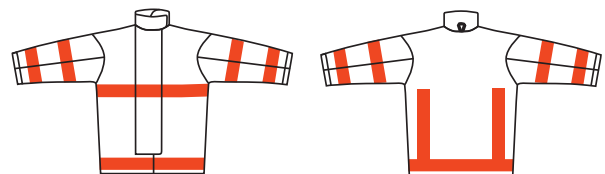
NFPA Hi-viz – Back



NFPA Standard – Back

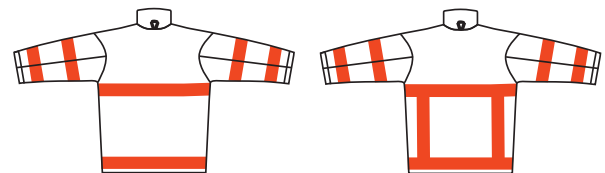
NFPA Combo – Back

### New York – 2" or 3"



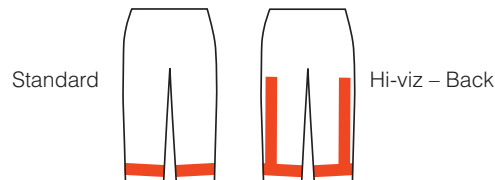
New York Standard – Front

New York Hi-viz – Back



New York Standard – Back

New York Combo – Back



Standard

Hi-viz – Back

**Exclusive Corporate Sponsor**



Honeywell is proud to be the exclusive corporate sponsor of the United States Fire Administration/National Fallen Firefighters Foundation's National Fire Service Vulnerability Assessment Project.

**Proudly Supporting**



**IAFC**  
International Association of Fire Chiefs



**The IAFF**  
Fire Fighters Burn Foundation



**Firefighter Cancer Support Network**



**International Association of Black Professional Fire Fighters**



**International Association of Women in Fire & Emergency Services**



**NFFF**  
National Fallen Firefighters Foundation



**NVFC**  
National Volunteer Fire Council



**FDSOA**  
Fire Department Safety Officers Association



**Congressional Fire Services Institute**



**ISFSI**  
International Society of Fire Service Instructors



**NFPA**  
National Fire Protection Association



**FEMSA**  
Fire Equipment Manufacturers & Suppliers Association

**Honeywell Life Safety**

Honeywell First Responder Products  
#1 Innovation Court  
Dayton, Ohio 45414  
Tel: 800-688-6148  
www.HoneywellFirstResponder.com

