

WINDOW/ WATER CURTAIN NOZZLE



TECHNICAL DATA

MODEL	WC-15 & WC-20 in Brass IS319 / ASTM B16
	WC-15S & WC-20S in S.S. construction
MAXIMUM WORKING PRESSURE	12.3 Bar (175 PSI)
EFFECTIVE WORKING PRESSURE	1.4 to 3.5 Bar (20 - 50 PSI)
END CONNECTION	WC-15 & WC-15S with 1/2" BSPT (NPT optional)
	WC-20 & WC-20S with 3/4" BSPT (NPT optional)
K-FACTOR	Model : WC-15 / WC-15S K23, K30, K37, K45, K53 & K72
	Model : WC-20 / WC-20S K98, K120, K140
WEIGHT (Approx)	Model WC-15 - 0.180Kg Model WC-20 - 0.250Kg
FINISH	Natural Brass finish, chrome plated brass or electroless brass finish (optional) Natural finish for WC- 15S & WC-20S
ORDERING INFORMATION	Specify Model, K factor and Finish

DESCRIPTION

Water Curtain Nozzle distributes water in a flat curtain extending all the way to the ground.

Water Curtain Nozzle when mounted in pendent position acts as a window spray nozzle to protect interior walls, windows and other openings of the building which are affected by fire.

The nozzles when mounted in horizontal position with flow towards ground, a flat water curtain is produced to segregate the area which is under fire.

Water Curtain Nozzles are available in Brass and Stainless Steel construction with different flow rate.

The main pipeline strainer as per NFPA-15 is required



for system utilizing nozzle orifice diameter less than 9.5mm (3/8 inch).

MAINTENANCE

The spray nozzle must be handled with due care. For best results, the storage as well as any further shipment be made in original packing only.

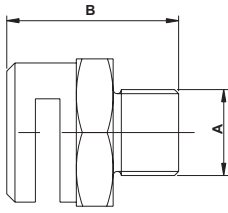
Nozzle which is visibly damaged should not be installed.

Use Teflon tape or soft thread sealant on male thread of the nozzle. The nozzles must be tightened in to the fitting. Excessive tightening torque may result into serious damage to nozzle arms and the deflector which may affect spray pattern of the nozzle and it's performance.

It is recommended that water spray system be inspected regularly by authorised technical personnel. The nozzle must be checked for atmospheric effects, external and internal obstruction, blockage if any. The nozzles should be cleaned or replaced if required. The system must be operated with optimum water flow at least twice in a year or as per the provisions of NFPA/TAC or local authority having jurisdiction.

The owner is solely responsible for maintaining the water spray system and the components therein so that it performs properly when required.

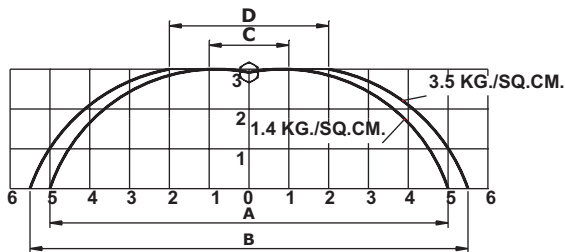
DIMENSION in millimetre (Approximate)



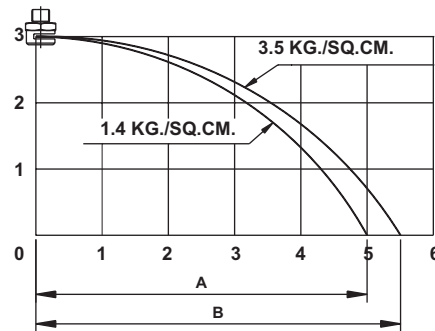
MODEL	A	B
WC-15 & WC-15 S	1/2" BSPT	42
WC-20 & WC-20 S	3/4" BSPT	46

SPRAY PATTERN

HORIZONTAL MOUNTED FLOW DOWN WARD

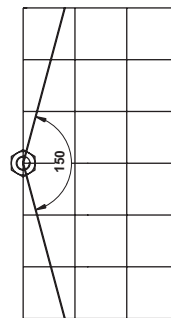


PENDENT MOUNTED



DIMENSION in meters (Approximate)

	K23	K30	K37	K45	K53	K72	K98	K120	K140
A	10.0	10.0	11.0	11.0	12.2	13.8	14.0	14.4	14.6
B	11.0	11.0	12.0	12.0	13.3	14.2	14.4	15.0	15.1
C	01.8	01.8	02.2	02.2	03.0	04.4	04.2	04.4	04.5
D	02.2	02.2	02.4	02.4	03.6	04.8	05.2	05.4	05.5



The distance between two nozzles should be 2.5 meters (maximum) for better performance.

The distribution profile indicates approximate (maximum) trajectory and no specific density is implied through above patterns.

Note :

1) The spray data is obtained from the tests carried out in still air.

DIMENSION in meters (Approximate)

	K23	K30	K37	K45	K53	K72	K98	K120	K140
A	5.0	5.0	5.3	5.3	5.5	5.9	6.2	6.4	6.6
B	5.5	5.5	5.8	5.8	6.0	6.2	6.3	6.5	6.8

LIMITED WARRANTY

HD FIRE PROTECT PVT. LTD. hereby referred to as HD FIRE warrants to the original purchaser of the fire protection products manufactured by HD FIRE and to any other person to whom such equipment is transferred, that such products will be free from defect in material and workmanship under normal use and care, for two (2) years from the date of shipment by HD FIRE. Products or Components supplied or used by HD FIRE, but manufactured by others, are warranted only to the extent of the manufacturer's warranty. No warranty is given for product or components which have been subject to misuse, improper installation, corrosion, unauthorized repair, alteration or un-maintained. HD FIRE shall not be responsible for system design errors or improper installation or inaccurate or incomplete information supplied by buyer or buyer's representatives.

HD FIRE will repair or replace defective material free of charge, which is returned to our factory, transportation charge prepaid, provided after our inspection the material is found to have been defective at the time of initial shipment from our works. HD FIRE shall not be liable for any incidental or consequential loss, damage or expense arising directly or indirectly from the use of the product including damages for injury to person, damages to property and penalties resulting from any products and components manufactured by HD FIRE. HD FIRE shall not be liable for any damages or labour charges or expense in making repair or adjustment to the product. HD FIRE shall not be liable for any damages or charges sustained in the adaptation or use of its engineering data & services. In no event shall HD Fire's product liability exceed an amount equal to the sale price.

The foregoing warranty is exclusive and in lieu of all other warranties and representation whether expressed, implied, oral or written, including but not limited to, any implied warranties or merchantability or fitness for a particular purpose. All such other warranties and representations are hereby cancelled.

NOTICE :

The equipment presented in this bulletin is to be installed in accordance with the latest publication standards of NFPA or other similar organisations and also with the provision of government codes or ordinances wherever applicable.

The information provided by us are to the best of our knowledge and belief, and are general guidelines only. Site handling and installation control is beyond our reach. Hence we give no guarantee for result and take no liability for damages, loss or penalties whatsoever, resulting from our suggestion, information, recommendation or damages due to our product.

Product development is a continuous programme of HD FIRE PROTECT PVT. LTD. and hence the right to modify any specification without prior notice is reserved with the company.



C-3/6, THE NANDANVAN IND. ESTATE, L.B.S. MARG, THANE 400 604., INDIA.
• PHONES : + (91) 22 2583 5434 • 2582 6958 • 2582 6793
• FAX : +(91) 22 2581 2524 • 6796 9049
• EMAIL : info@hdfire.com • WEBSITE : www.hdfire.com