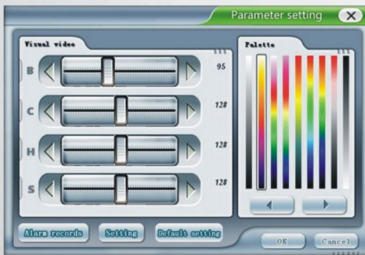


## On-line IR Fever Sensing System

IR236 Fever Sensing System is professional in taking thermal images even on the flowing crowds with high efficiency and distinguish those with elevated temperature, which indicates possible presence of the fatal virus, like SARS and H1N1. With a size similar to competition products, it integrates a wide assortment of features that deliver unprecedented efficiency, convenience and productivity. IR236 Fever Sensing System is absolutely the ideal equipment in the airports, ports, and stations, and it is the first guard to protect your health and wealth.

### Features and Benefits



Professional but easy-to-use software enabling maintenance free



Precise single & multiple hot spots tracing and alarm

Find the Fever People Precisely and Alarm Automatically

Block-free communication with database and network commanding station

Intelligent object differentiation avoiding false alarm and interference

Razor-sharp visual and thermal imaging



### Applications

Control and decrease the spreading of disease with precursor of fever, like SARS and H1N1, ideal for massive temperature control in public area, such as airports, ports, railway stations and etc.



# Specifications

Imaging Performance	
Detector Type	Microbolometer UFPA 384x288 pixels, 25 $\mu$ m
Spectral Range	8-14 $\mu$ m
Thermal Sensitivity	$\leq 0.08^{\circ}\text{C}$ @30 $^{\circ}\text{C}$
Response Time	7ms
Bad Pixels	<1%
Temperature Range	0 $^{\circ}\text{C}$ - 50 $^{\circ}\text{C}$
Frame Frequency	50 Hz/60 Hz
Field of View	21.7 $^{\circ}$ X 16.4 $^{\circ}$
Focusing Range	50cm - $\infty$
Non-uniformity Calibration	Auto/Manual
Video Output	PAL/NTSC
Interface	
Remote Control	RS485 serial communication
Environmental Specification	
Operating Temperature	-10 $^{\circ}\text{C}$ - +50 $^{\circ}\text{C}$
Storage Temperature	-20 $^{\circ}\text{C}$ - +60 $^{\circ}\text{C}$
Power System	
Power Supply	110/220V AC adapter
Power Requirements	16V
Physical Characteristics	
Camera Dimensions	430mmX240mmX40mm
Weight	2kg (excluding PC)

