

# CULT-Communication-Management-System for Mobile Command Units

...worldwide for fire and rescue!



Up to now there have been numerous control elements for the various communication systems in the Mobile Command Units (MCU 1 and MCU 2).

With the new Cult-Communication-Management-System it is possible to **manage and control** all relevant functions

- **easy,**
- **clear,**
- **functional**

by just **1 system.**

Through this there is enough time for the real operation as the paperwork and the herewith connected work will be reduced to a minimum.

Installation of the CULT-system in MCU 2



### Advantages of the Cult-communication system:

- controlling the complete communication technology by just one control element
- clear arrangement of the communication elements
- all voice communication media (radio + phone) on a headset/handheld device
- easy and safe handling

Due to the installation of the CULT-system the control of the communication technology will be made by touch screen.

Conference table with screen which is connected to a work place



A control panel for controlling the radio devices will be available optionally to a PC-supported work place.

It is also possible to design this control panel pluggable which enables an operation at various displaced positions.



Control panel as fallback level

- connection of an ISDN telephone system in different expansion stages and end devices
- connection of ISDN-compatible GSM modules
- control of a 5-tone alarm device (optional)
- each work place is equipped with a headset and separately controlled loudspeakers

### Cult - radio display

- control of up to 6 radio devices and telephones
- display of the radio operation mode
- display of the last FMS-telegram
- display of the incoming telephone numbers

The basic display on the left hand side of the screen will constantly be shown while it is possible to open other windows on the right hand side (e.g. telephone, FMS, recorder etc.)



CULT-radio display

### CULT - telephone display

- control of a telephone by screen
- management of 80 speed-dial numbers.
- management of a telephone book with 500 entries incl. various search functions
- direct dialling by keypad
- managing of a telephone-caller list with direct dialling



### Overview of the Cult-Communication-Management-System

The control of this user interface is very simple and will either be made by a

- touch screen and / or
- keyboard with mouse.

The user interface is separated into several windows where the individual functions are stored. Therefore various programs are simultaneously available on one screen like e.g. telephone and radio.

The sample of the CULT- Communication-Management-System is designed modular and can be adjusted to the corresponding requirements of the customer like e.g. with:

- 3 networked work places as well as another displaced communication place (optional)
- connection of up to 6 radio devices (incl. channel switching at Motorola FuG 8b-1, optional)

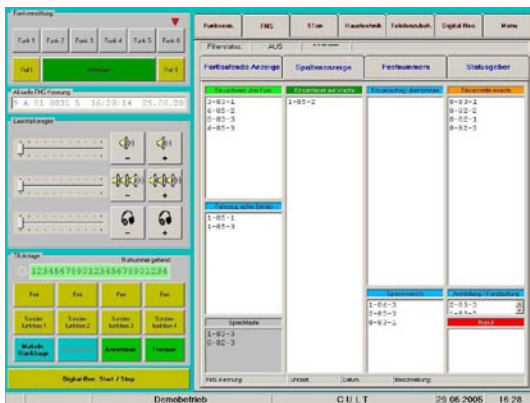
# CULT-Communication-Management-System



CULT-telephone display

**Cult FMS monitor**

FMS – monitor with consecutively display as well as column display and fix telephone numbers. Keeping a FMS-vehicle list incl. storage of 200 telegrams, at least.



CULT-FSM interface

**Cult vehicle technology**

The control acts for the remote control of various switching functions. Here, vehicle-specific functions like e.g.:

- scene-lights
- control of the mast cameras

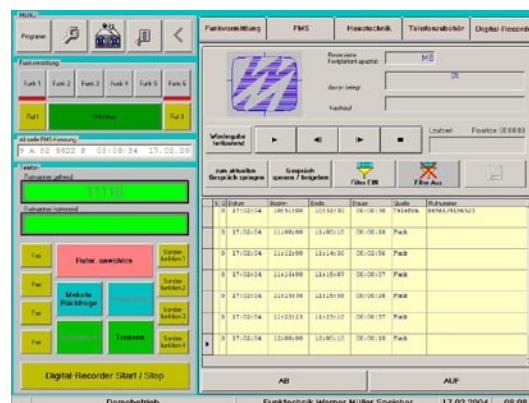
can be controlled. A control can be handled by PC or by push-buttons directly.



CULT vehicle technology

**Cult Recorder**

The Cult recorder contains the control of an integrated digital recorder. Here the conversations will be recorded with displaying the source like radio device or telephone number. All incoming and outgoing calls will be recorded. Various search functions for conversations and outsourcing possibilities of conversation data as wave file are available. (Does not replace a safe testimony longtime-documentation)



CULT Recorder

References:



MCU 1, Airport Leipzig



MCU 1, Shanghai



MCU 2, Municipal fire brigade Essen



MCU 2 Specialist vehicle, Shanghai



MCU 2 Specialist vehicle, Münster



# CULT-Communication-Management-System



Gimaex-Schmitz Fire and Rescue GmbH  
Essener Straße 8  
57234 Wilnsdorf, Germany  
Tel. +49 (0) 27 39-8 09-0  
Fax +49 (0) 27 39-8 09-99  
eMail info@gimaex-schmitz.com  
www.gimaex-schmitz.com

...worldwide for fire and rescue!

www.j-t-m-p.de