

### Features

Suitable for use with Vidar monitor  
Rugged construction  
Easy to operate  
Excellent throw range  
Wide range of materials



### Description

Vile M manually operated foam/water nozzle is suitable for use with Vidar range monitor. Vile M is available with 2 1/2", 3" or 4" BSP thread with flow rates up to 8000 lpm.

### Application

Vile M manually operated nozzle is a fog/jet nozzle for use in water or foam applications. Vile M is recommended for use with following foam types:

- Protein, FP or FFFP 3% or 6%
- AFFF 3% or 6%
- AFFF ARC or FFFP ARC 3x3 or 3x6
- Multi purpose foam

### Operation

The nozzle can be mounted to any monitor or outlet with corresponding thread size. The ideal operating pressure is 7 bar at the nozzle inlet. Using the levers, the Vile M nozzle spray pattern can be changed under operating from full jet to fog with up to 120 degree spray pattern. After using foam solution, clean it with water.

### Options

- Nozzle material: aluminium / brass / stainless steel
- Different flow rates calibrations

#### NOTES

Flow range settings available for each model shown in table below. Throw range and spray pattern diagrams are shown separately below.

### Technical data

Model	Figure	A mm	Ø D BSP	Flow rate (1) l/min.-7 bar	Material	Weight Kg
VILE M A-5-25	1	167	2 1/2" ÷ 3"	500-2500	aluminium	2.5
VILE M B-5-25	1	167	2 1/2" ÷ 3"	500-2500	brass	6.5
VILE M S-10-40	2	165	2 1/2" ÷ 3"	1000-4000	stainless steel AISI 316	8
VILE M S-30-80	2	200	3" ÷ 4"	3000-8000	stainless steel AISI 316	10

(1) Depending on foam concentrate type.

Dimensions are in mm

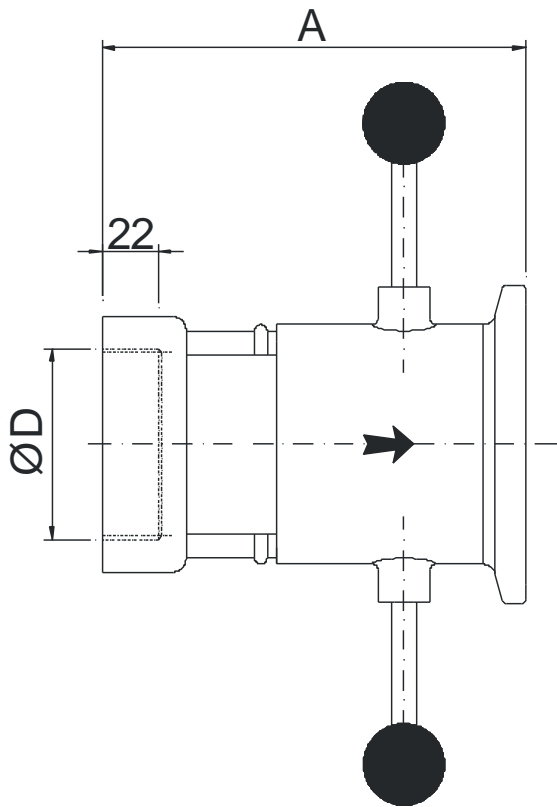


Figure 1: Vile 5-25 (500 to 2500 lpm) aluminium(optional brass) versions

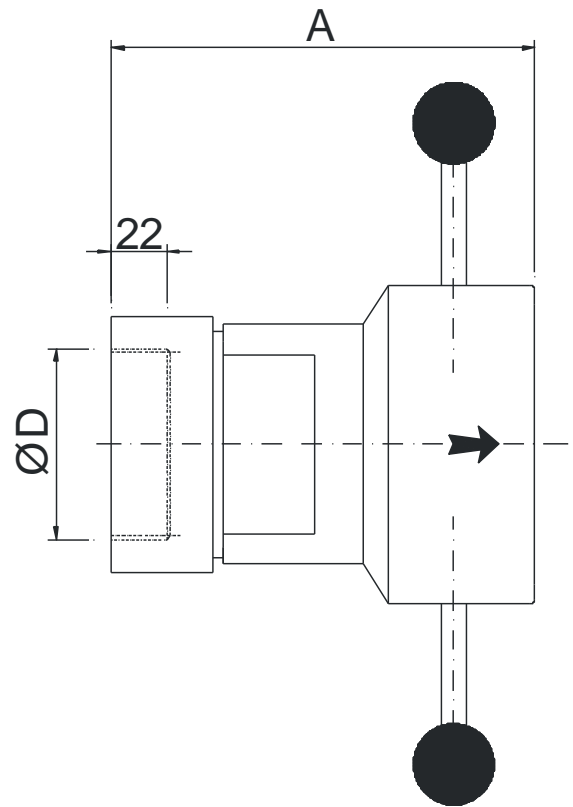
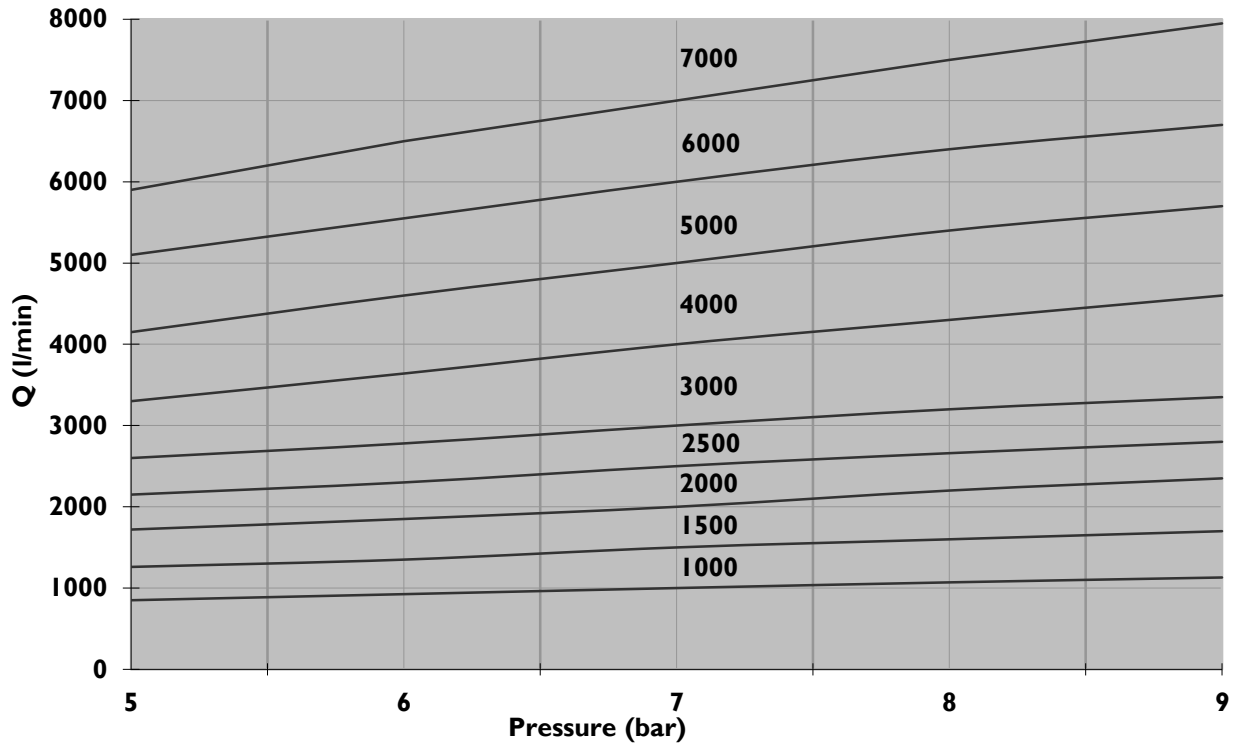
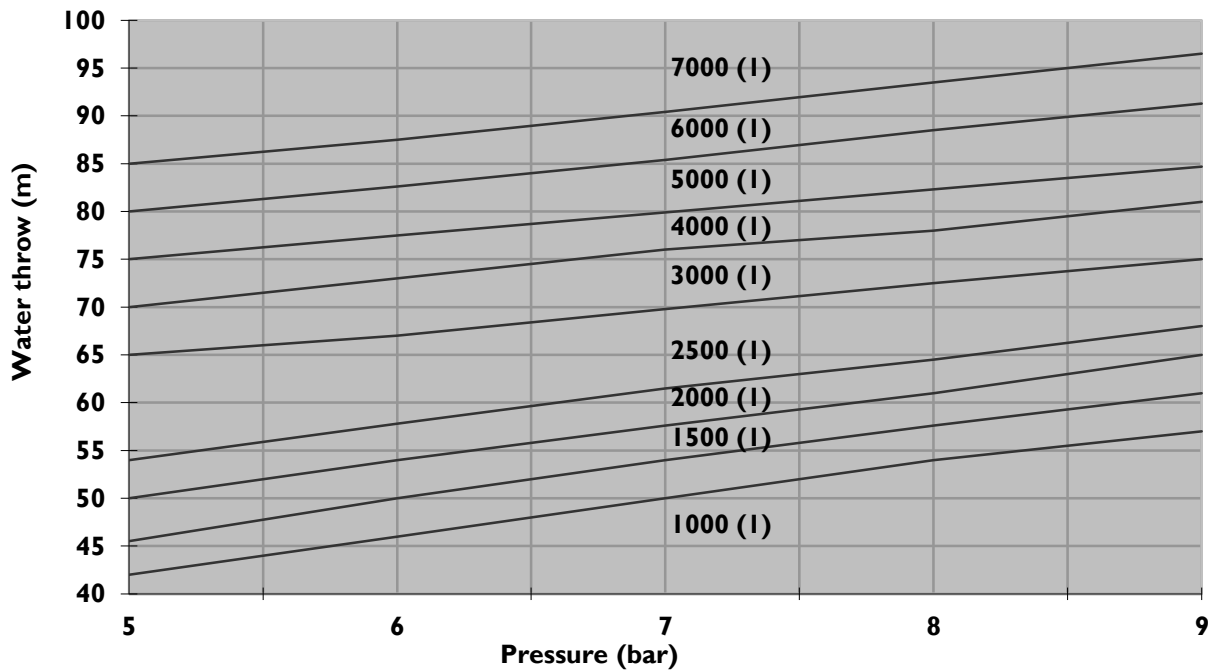


Figure 2: Vile 10-40 (1000 to 4000 lpm) and 30-80 (3000 to 8000 lpm) stainless steel versions

### Flow diagram VILE



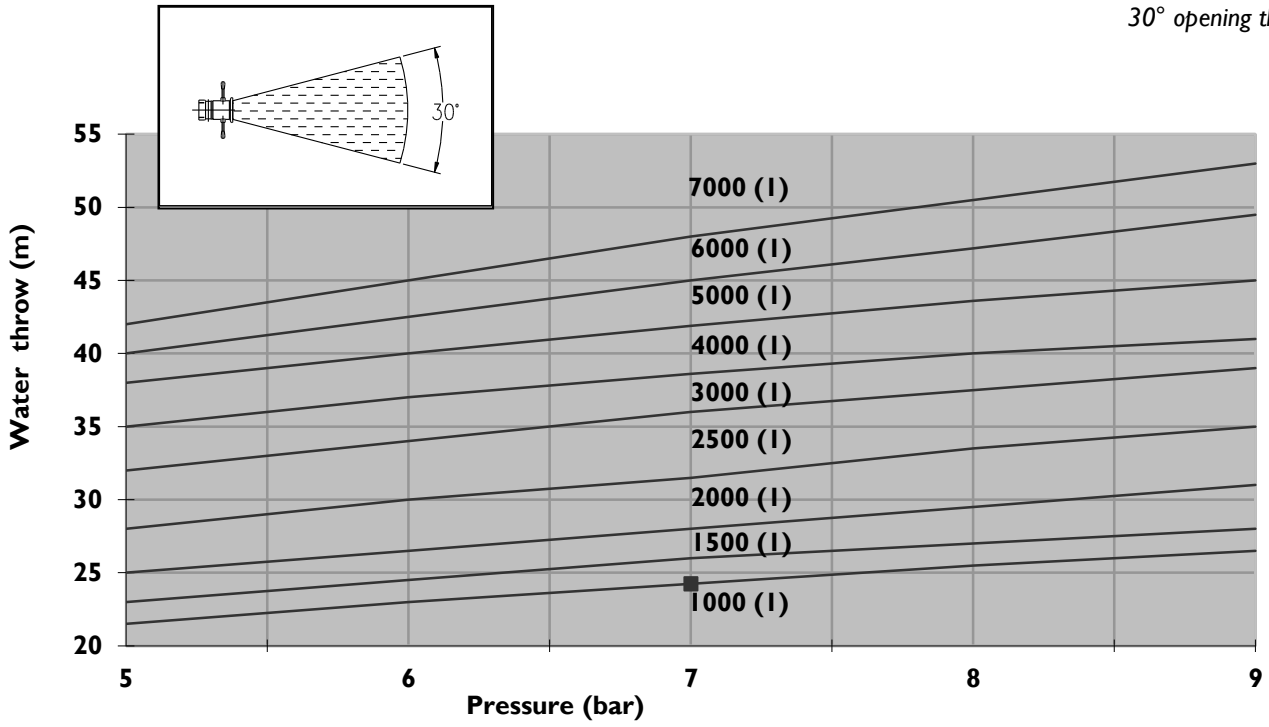
### Straight stream throw VILE



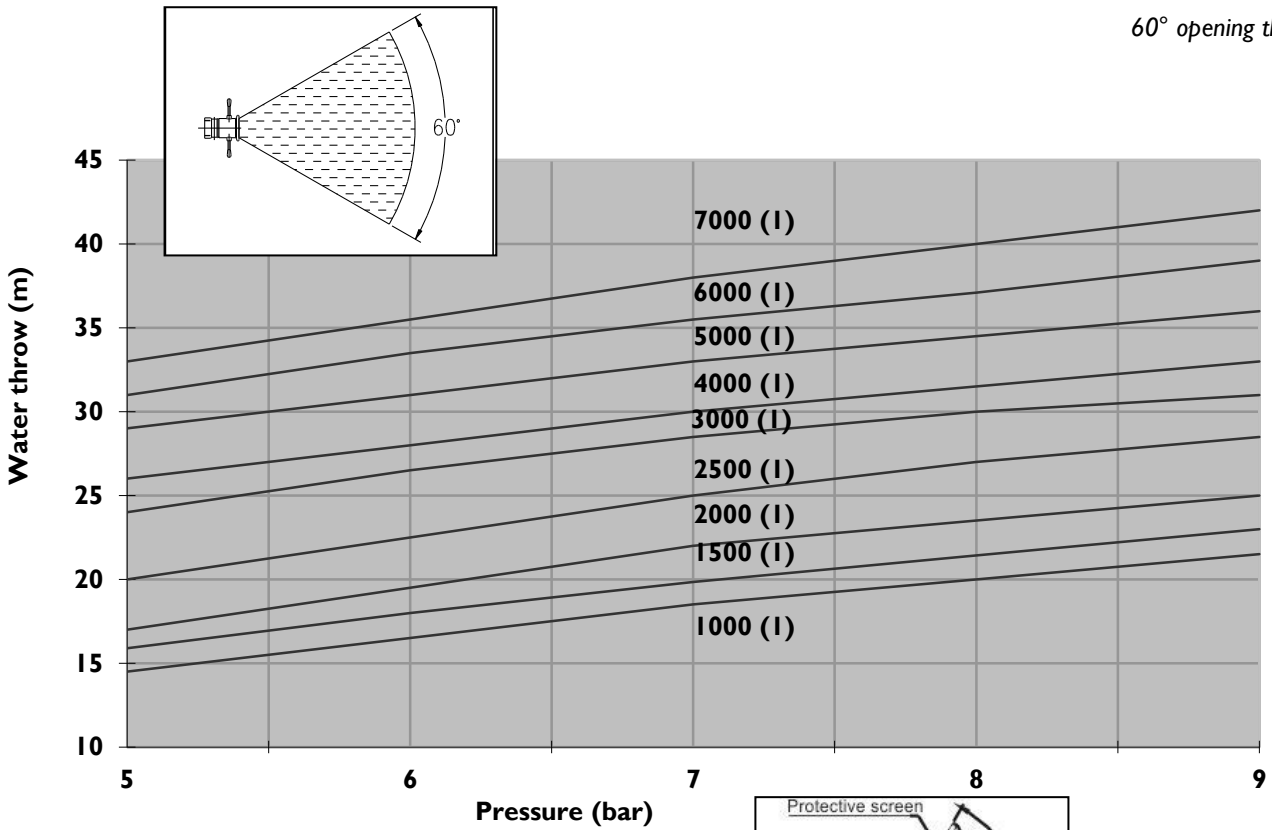
(l) Rated flow (l/min.-7 bar).

\*) For self-suction nozzle type Vile S please consider approx. 13% less throw range compared to Vile M (Depending on foam concentrate type)

30° opening throw



60° opening throw



(l) Rated flow (l/min.-7 bar).  
Performance at maximum opening (at 7 bar)

