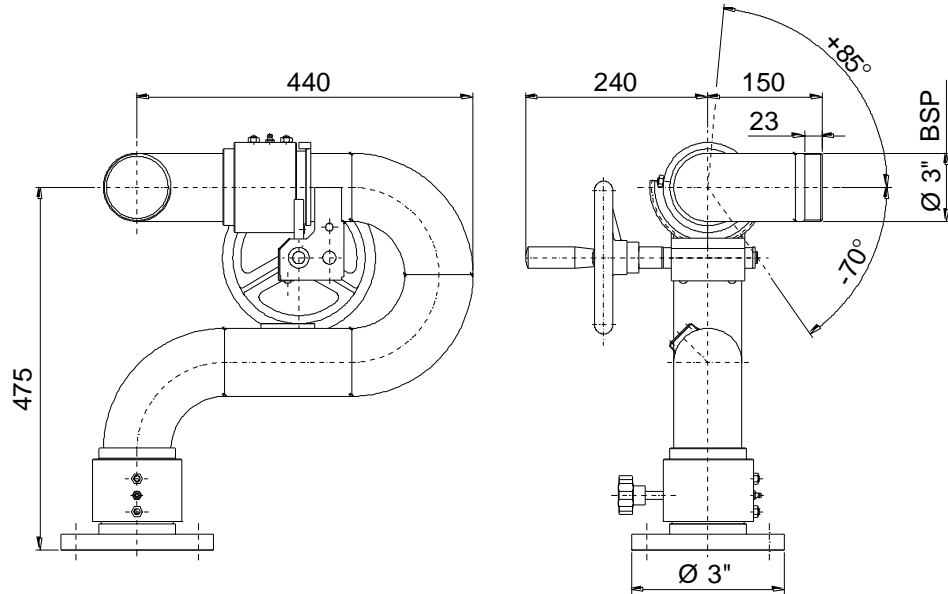
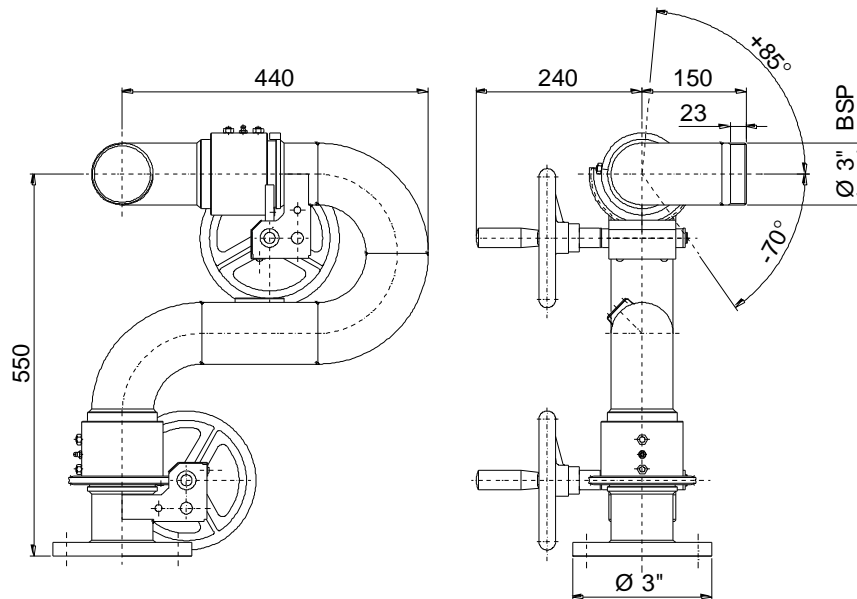


Model W 3



Model W T3



Dimensions in mm

Construction features

Body material: stainless steel AISI 316, size 3"
 Joints material: stainless steel AISI 316, phosphor bronze balls mounted with greasers
 DIN or ANSI inlet flange material: carbon steel
 Design pressure: 16 bar
 Max. working pressure (advised): 12 bar
 Rotation: 360° continuous
 Finish: red epoxy paint (RAL 3000)

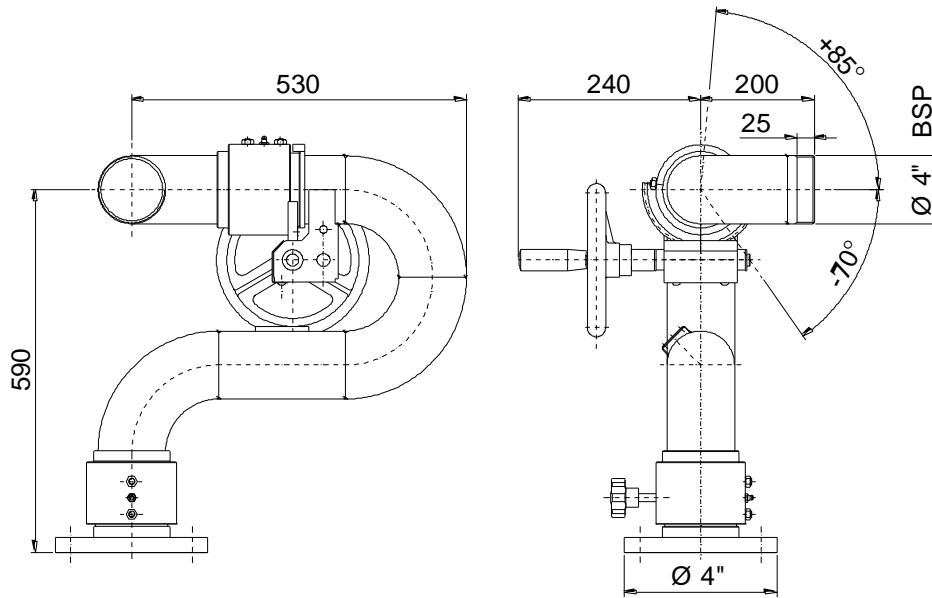
Optional

Inlet flange material: stainless steel AISI 316
 Different inlet flange sizes
 Hydraulic and/or functional test witnessed

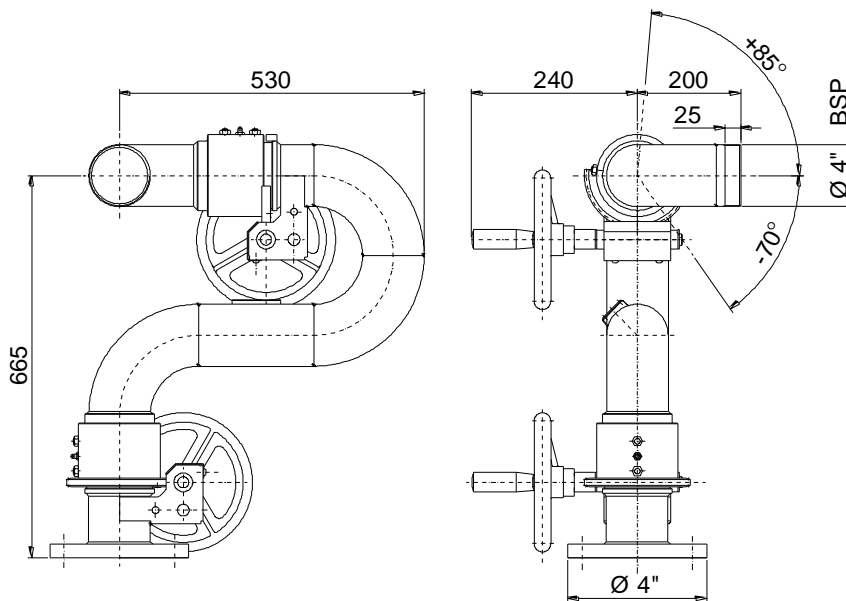
Technical data

Model	Max Flow rate	Weight
W 3	4000 l/min	24 kg
W T3	4000 l/min	26 kg

Model W 4



Model W T4



Dimensions in mm

Construction features

Body material: stainless steel AISI 316, size 4"
 Joints material: stainless steel AISI 316, phosphor bronze balls mounted with greasers
 DIN or ANSI inlet flange material: carbon steel
 Design pressure: 16 bar
 Max. working pressure (advised): 12 bar
 Rotation: 360° continuous
 Finish: red epoxy paint (RAL 3000)

Optional

Inlet flange material: stainless steel AISI 316
 Different inlet flange sizes
 Hydraulic and/or functional test witnessed

Technical data

Model	Max Flow rate	Weight
W 4	8000 l/min	34 kg
W T4	8000 l/min	37 kg