

Construction features

Body material: stainless steel AISI 316
 Protection gear case material: aluminium
 Joints material: stainless steel AISI 316, phosphor bronze balls mounted with greasers
 UNI/DIN or ANSI flange material: carbon steel
 Design pressure: 16 bar
 Minimum working pressure: 2,5 bar
 Maximum working pressure (advised): 12 bar
 Rotation angle: 360° continuous
 Rotation speed: 8°/sec (variable)
 Required oil flow: 3 litres/minute
 Required oil pressure: 60 bar +/- 10 bar
 Horizontal and vertical movements driven by reduction gear hydraulic motor with end stroke safety clutch
 Finish: red epoxy paint (RAL 3000)

Optional

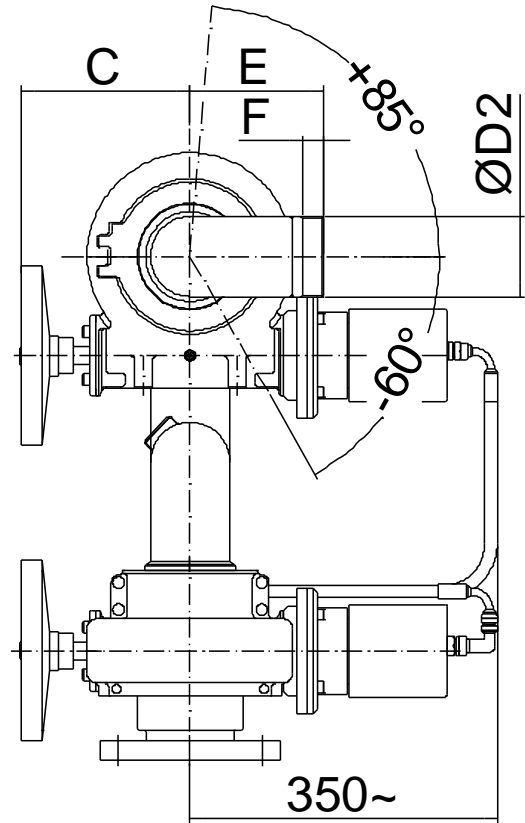
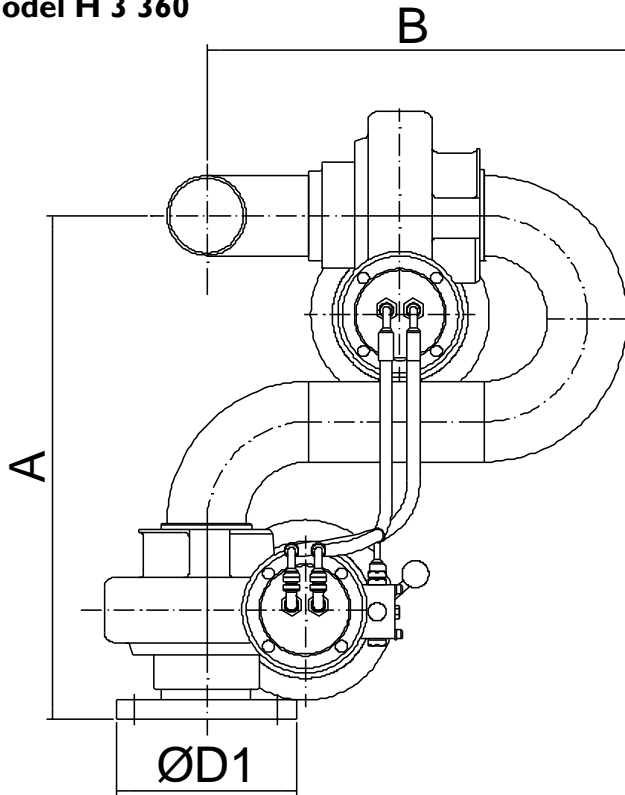
Different elevation and rotation angles
 Inlet flange material: stainless steel AISI 316
 Different inlet flange sizes
 Safety hand wheel
 By-pass for manually operated override with hand-wheel
 Hydraulic and/or functional test witnessed



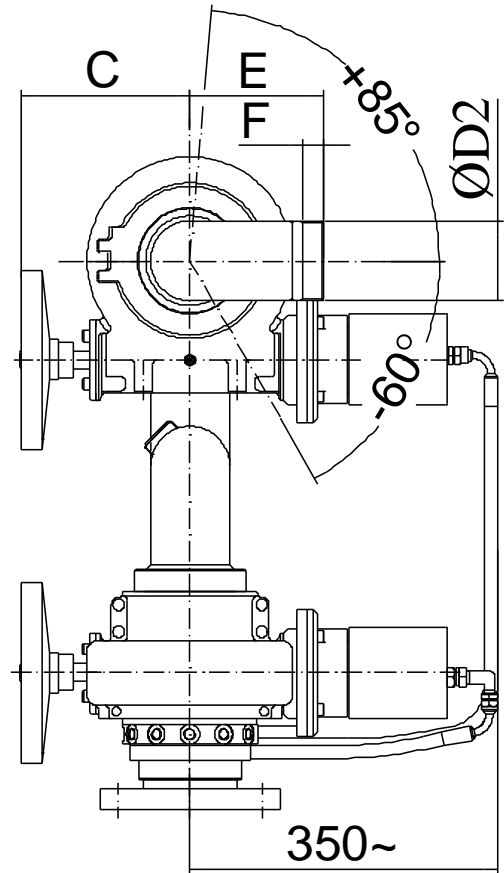
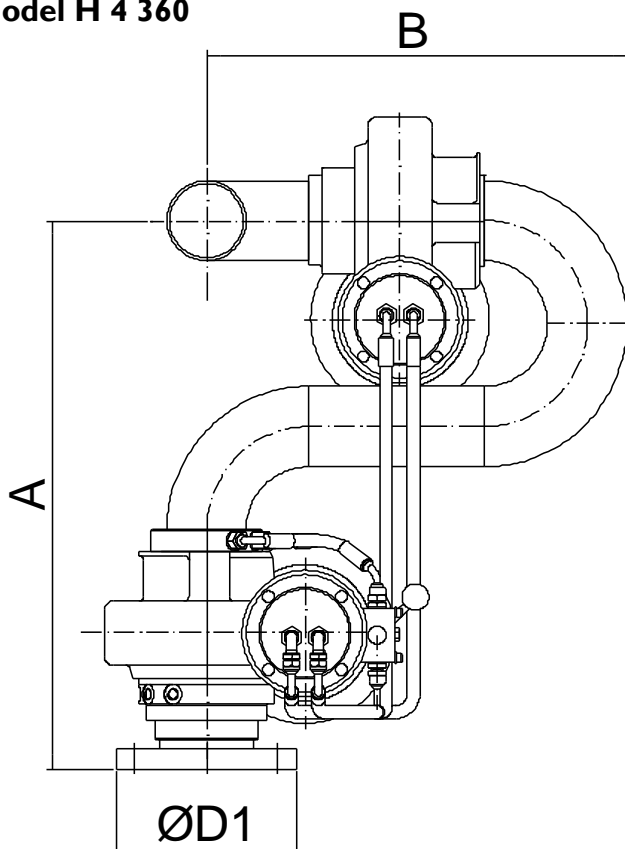
Technical data

| Model | Ø Body size | A | B | C | Ø D1 | Ø D2 BSP | E | F | Max Flow rate | Weight |
|---------|-------------|--------|--------|--------|------|----------|--------|-------|---------------|--------|
| H 3 | 3" | 600 mm | 455 mm | 210 mm | 3" | 3" | 150 mm | 23 mm | 4000 l/min | 60 kg |
| H 3 360 | 3" | 610 mm | 455 mm | 210 mm | 3" | 3" | 150 mm | 23 mm | 4000 l/min | 70 kg |
| H 4 | 4" | 710 mm | 545 mm | 210 mm | 4" | 4" | 200 mm | 25 mm | 7000 l/min | 65 kg |
| H 4 360 | 4" | 760 mm | 545 mm | 210 mm | 4" | 4" | 200 mm | 25 mm | 7000 l/min | 75 kg |

Model H 3 360

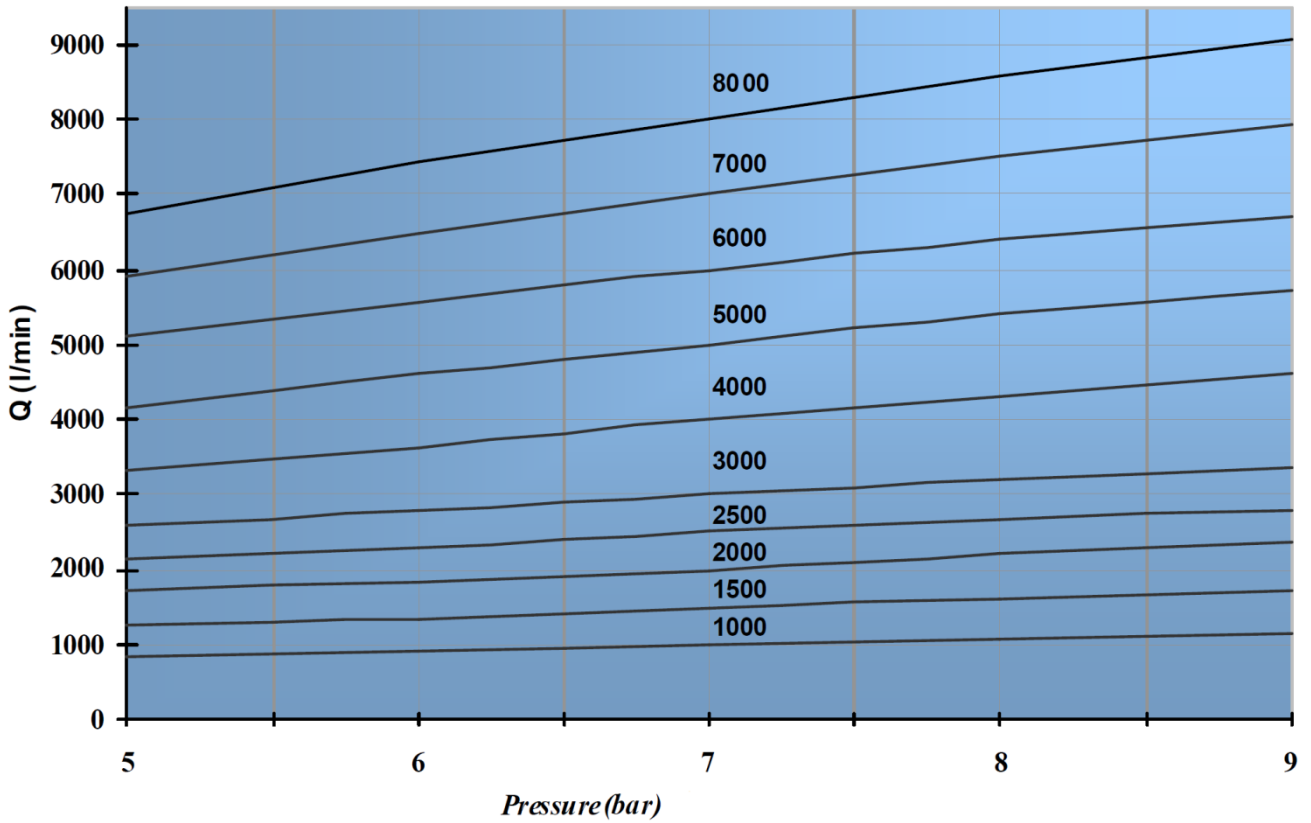


Model H 4 360

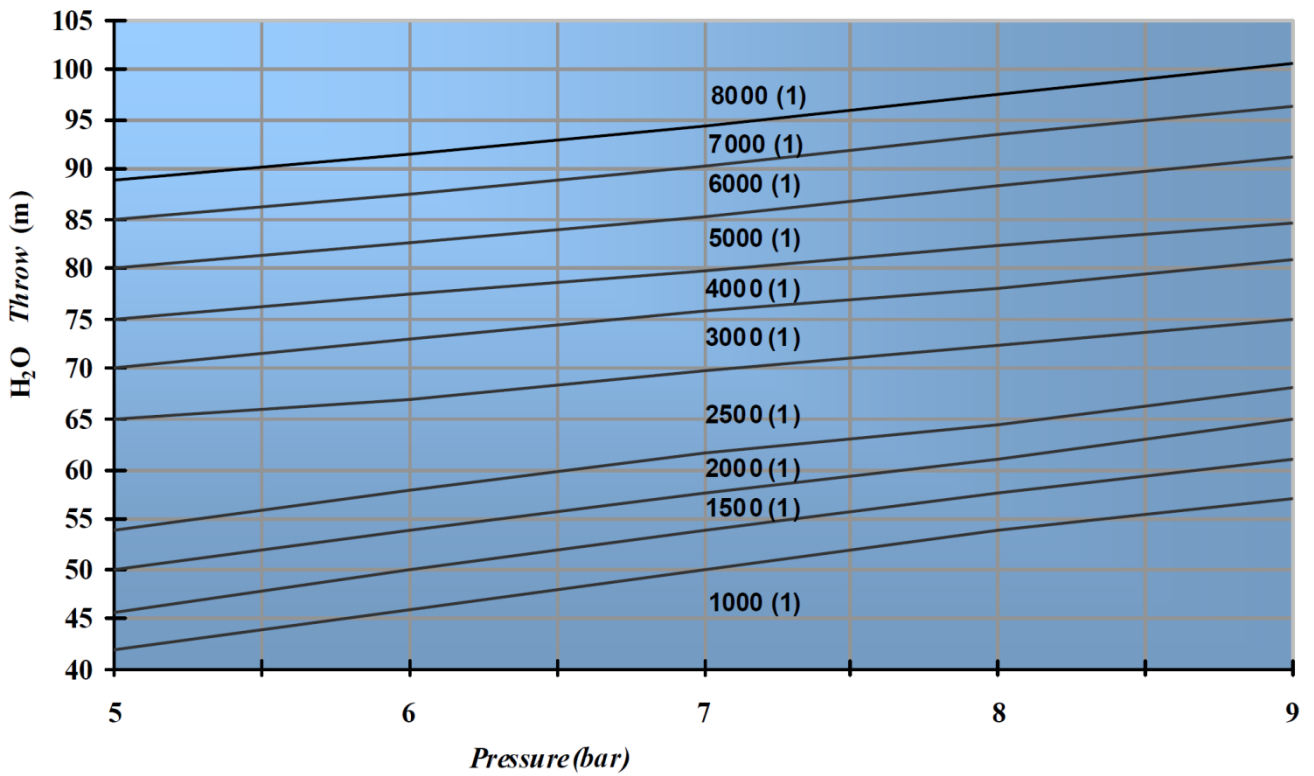


Dimensions in mm

Flow diagram



Straight stream throw



Rated flow (l/min.-7 bar)

Optional : Vidar-H with foam branch pipe

Construction features

- Body: stainless steel AISI 316
- Nozzle: light anodised alloy
- Maximum working pressure: 12 bar

Optional

- Nozzle material: brass

* Optional duck-mouth version



LS-5-DM



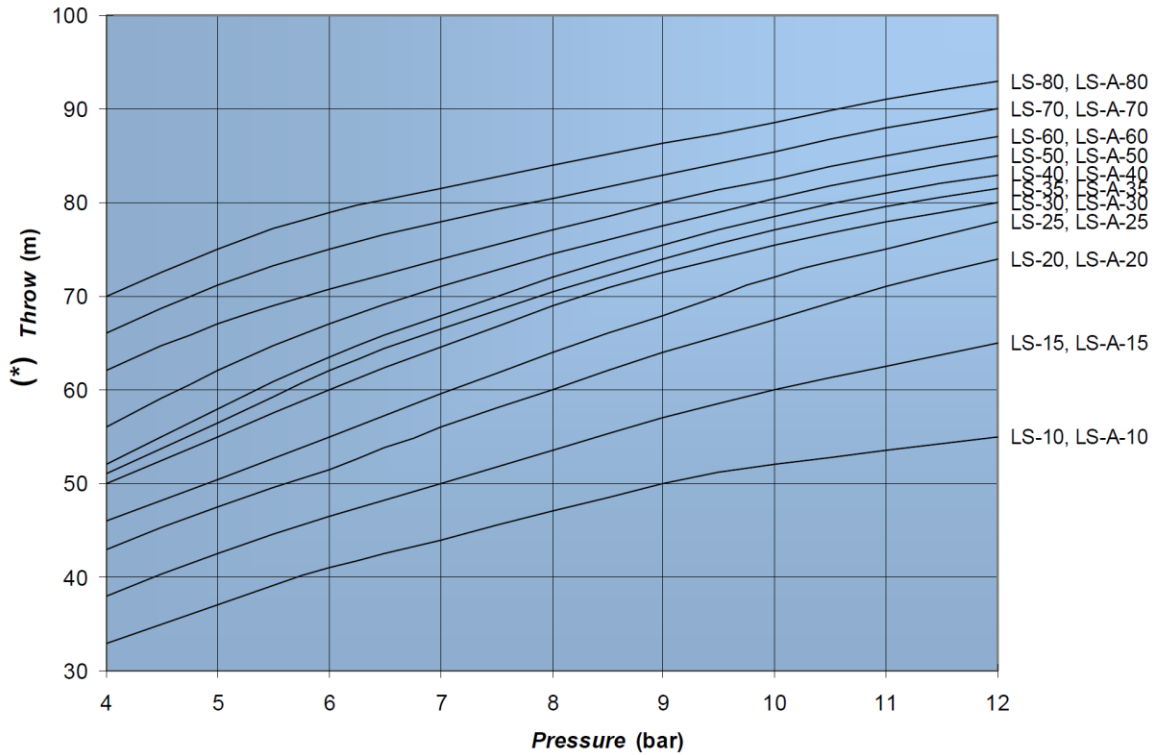
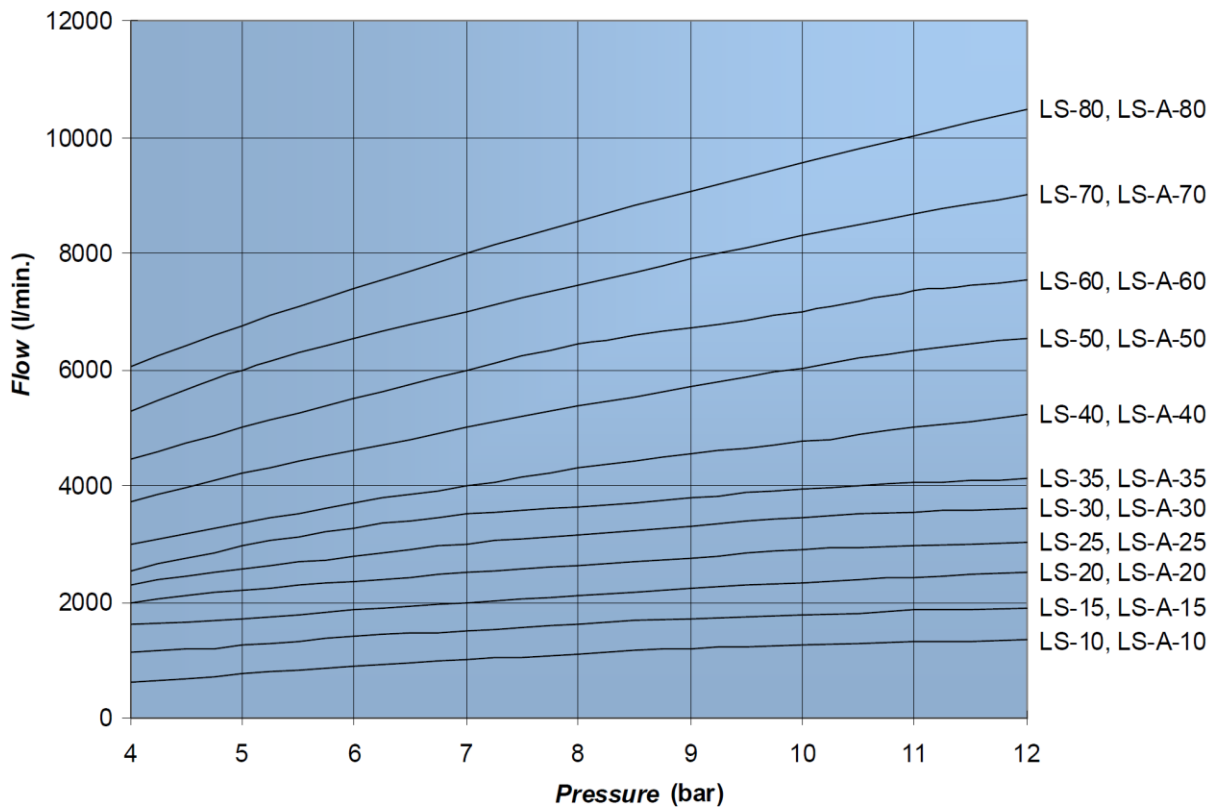
Picture shows Vidar-H with foam branch pipe

Technical data

| Model | L | Ød GAS – BSP | Flow rate at 7 bar | Foam production (1) (2) l/min. - 7 bar | Weight |
|-------|---------|-----------------|-----------------------|---|--------|
| LS-10 | 1200 mm | 2½" | 1000 l/min | 6000 | 9 kg |
| LS-15 | 1200 mm | 2½" | 1500 l/min | 9000 | 9 kg |
| LS-20 | 1200 mm | 2½" – 3" | 2000 l/min | 12000 | 9 kg |
| LS-25 | 1200 mm | 3" – 4" | 2500 l/min | 15000 | 9 kg |
| LS-30 | 1500 mm | 3" – 4" | 3000 l/min | 18000 | 12 kg |
| LS-35 | 1500 mm | 3" – 4" | 3500 l/min | 21000 | 12 kg |
| LS-40 | 1600 mm | 3" – 4" | 4000 l/min | 24000 | 12 kg |
| LS-50 | 1600 mm | 4" | 5000 l/min | 30000 | 15 kg |
| LS-60 | 1600 mm | 4" | 6000 l/min | 36000 | 15 kg |
| LS-70 | 1600 mm | 4" | 7000 l/min | 42000 | 15 kg |
| LS-80 | 1600 mm | 4" | 8000 l/min | 48000 | 15 kg |

(1) Expansion ratio: 1: 6 at 7 bar

(2) Depending on foam concentrate type.



(* *Depending on foam production*)