

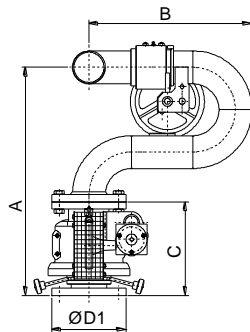
Construction features

Body material: stainless steel AISI 316
 Joints material: stainless steel AISI 316, phosphor bronze balls mounted with greasers
 UNI/DIN or ANSI flange material: carbon steel
 Design pressure: 16 bar
 Minimum working pressure: 2,5 bar
 Maximum working pressure (advised): 12 bar
 Rotation angle: adjustable from 15° to 360°
 Rotation speed at 7 bar: 4°/sec
 Horizontal movement is produced by a water driven turbine that causes the oscillation of the apparatus
 Finish: red epoxy paint (RAL 3000)

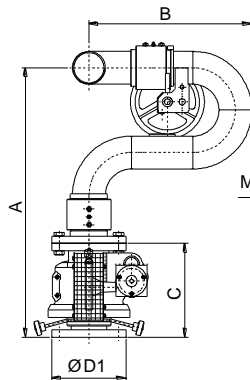
Optional

Inlet flange material: stainless steel AISI 316
 Different inlet flange sizes
 Hydraulic and/or functional test witnessed

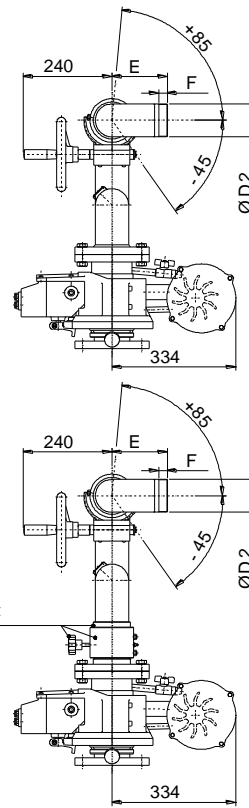
Model FOW 3 Model FOW 4



Model FOW S3 Model FOW S4



Manual rotating joint



Dimensions in mm

Technical data

Model	A	B	C	Ø D1	Ø D2 BSP	E	F
FOW 3	620 mm	440 mm	254 mm	3"	3"	150 mm	23 mm
FOW S3	730 mm	440 mm	254 mm	3"	3"	150 mm	23 mm
FOW 4	750 mm	530 mm	266 mm	4"	4"	200 mm	25 mm
FOW S4	860 mm	530 mm	266 mm	4"	4"	200 mm	25 mm

Model	Ø Body size	Max Flow rate	Water consumption	Weight
FOW 3	3"	4000 l/min	25l/min at 7 bar	40 kg
FOW S3	3"	4000 l/min	25l/min at 7 bar	42 kg
FOW 4	4"	7000 l/min	25l/min at 7 bar	52 kg
FOW S4	4"	7000 l/min	25l/min at 7 bar	54 kg