

FEATURES

- **Flow rate up to 12 000 lpm**
- **Trailer can be connected to any car, truck etc.**
- **Compact portable model**
- **Easy to handle**
- **Very light weight**
- **Low pressure loss in the monitor**
- **Low maintenance**

General Description

The trailer mounted monitor Tor is especially developed for mobile application in chemical and petrochemical plants. It combines many advantages:

- Mobile, installed on a wheeled trailer
- Flow rates up to 12 000 lpm
- Innovative piping causes only low pressure loss in the monitor
- Compact model, movable with 2-3 people

The trailer mounted monitor Tor is available in a three or four inlet version.

Application

- Chemical and petrochemical plants
- Tank protection
- Aircraft hangars and helicopter platforms
- Loading racks

Operation

The trailer mounted monitor is an easy-to-handle product. Lift the trailer wheels up by using a handle and fold up the legs on both sides. Disconnect the trailer from the truck, car etc. Attach a nozzle or branchpipe at the monitor outlet. Connect the hoses and pass them over the legs and start the water supply. During operation it is possible to adjust the direction, the throw range and height.



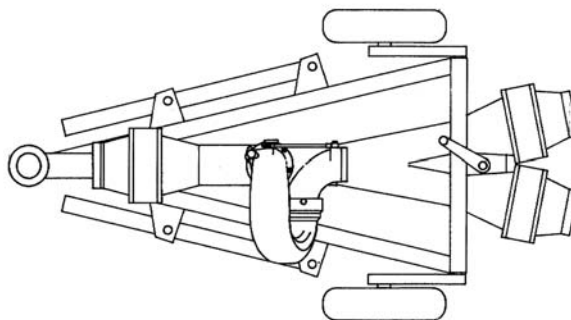
Tor is fitted with a 6" flange as it works with flows normal for a 6" monitor.

The pipes are manufactured in two different materials; anodized aluminium or bronze. Parts which are vital for the correct functions, such as swivels are in stainless steel. Innovative piping technology minimizes turbulence and frictional pressure loss.

Recommended foam concentrate

- AFFF 1%, 3% or 6%
- AFFF ARC 1x1, 3x3, 3x6 or 6x6
- FFFP 3% or 6%
- FFFP ARC 3x3 or 3x6
- Fluoroprotein 3% or 6%
- Protein 3% or 6%

Construction



Technical data

(1 inlet / 2 inlets)	12000 lpm
Elevation	+30° - +80°
Water inlet thread	3 x 150 mm 4 x 110 mm
Water outlet	2 1/2" BSP M thread
Material	Anodised aluminium Stainless Steel

Options

- 3 Inlets 150 mm
- 4 Inlets 110 mm

Additional following accessories are available:

- Foam/water nozzle, aluminium 6500 lpm or 12000 lpm
- Straight jet water nozzle, aluminium 6500 lpm or 12000 lpm
- Foam branchpipe, stainless steel with or without self induction 6500 lpm or 12000 lpm

For more information see our nozzle data sheets.

Quality Control and tests

Tor is manufactured according to European Standard EN-13565-1, and is CE-marked.