

MOTOR DRIVEN CERTIFIED ALL METAL FLEXIBLE COUPLINGS UL CERTIFIED RATINGS BHP/KW AT RPM

| MODEL | OPERATING SPEED | | | | | | | | | |
|--------|-----------------|-------|------|-------|------|-------|------|-------|------|-------|
| | 1450 | | 1750 | | 1800 | | 3000 | | 3600 | |
| C1040T | 50.8 | 37.9 | 61.3 | 45.7 | 63.1 | 47.1 | 105 | 78.3 | 126 | 94 |
| C1050T | 89 | 66.4 | 107 | 79.8 | 110 | 82.0 | 183 | 136.5 | 220 | 164.1 |
| C1060T | 139 | 103.7 | 168 | 125.3 | 173 | 129.0 | 288 | 214.8 | 346 | 258.0 |
| C1070T | 202 | 150.6 | 244 | 182 | 251 | 187.2 | | | | |
| C1080T | 417 | 311.8 | 503 | 375.1 | 518 | 386.3 | | | | |

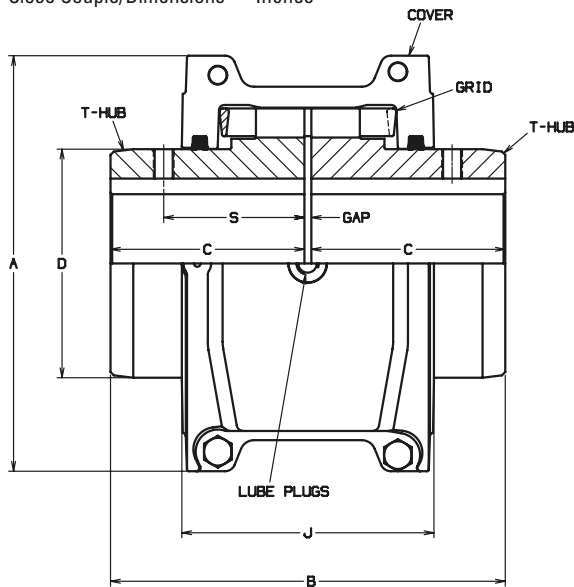
Couplings are not listed for service with diesel engines.

Motor certified couplings can only be used with fixed speed centrifugal fire pumps, contact factory for application guidelines for positive displacement pumps and variable speed fire pumps.

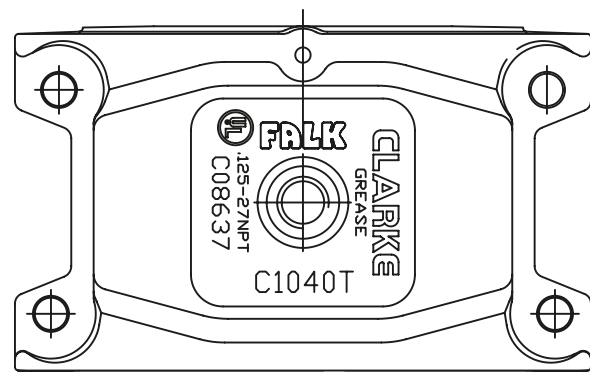


TYPE C10

Close Couple/Dimensions — Inches



Cover Profile — Horizontal Split



Covers are cast aluminum alloy

| MODEL | Max Speed rpm | Max Bore* | Min Bore | Cplg Wt With No Bore-(lb) | Lube Wt (lb) | Dimensions — Inches | | | | | | Max Gap |
|--------|---------------|-----------|----------|---------------------------|--------------|---------------------|------|------|------|------|------|---------|
| | | | | | | A | B | C | D | J | S | |
| C1040T | 3,600 | 1.625 | .500 | 7.4 | .12 | 4.50 | 4.12 | 2.00 | 2.25 | 2.75 | 1.58 | .25 |
| C1050T | 3,600 | 1.875 | .500 | 12.0 | .15 | 5.32 | 4.88 | 2.38 | 2.62 | 3.19 | 1.76 | .25 |
| C1060T | 3,600 | 2.125 | .750 | 16.0 | .19 | 5.82 | 5.12 | 2.50 | 3.00 | 3.68 | 2.06 | .25 |
| C1070T | 1,800 | 2.500 | .750 | 23.0 | .25 | 6.25 | 6.12 | 3.00 | 3.44 | 3.81 | 2.12 | .25 |
| C1080T | 1,800 | 3.000 | 1.062 | 39.0 | .38 | 7.50 | 7.12 | 3.50 | 4.12 | 4.55 | 2.54 | .25 |

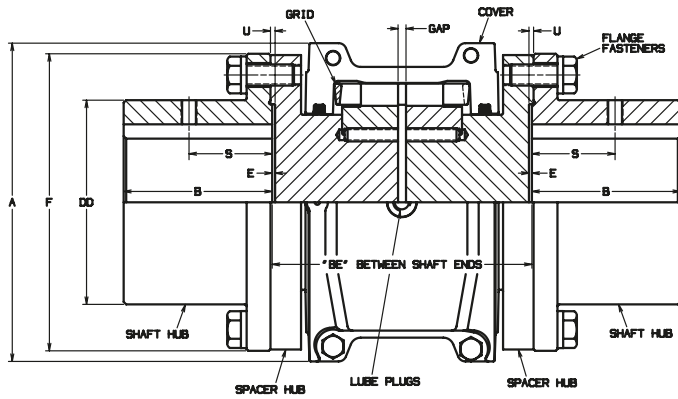
*T-hub max bore with square key. For larger bores with rectangular key, consult factory. For max bores for shaft-hubs consult factory.

*Standard couplings are designed for clearance fit with one set screw over keyway.



TYPE C31

Full Spacer



For dimensions, consult factory
Full Spacer or Half Spacer are required for end suction fire pumps

TYPE C35

Half Spacer

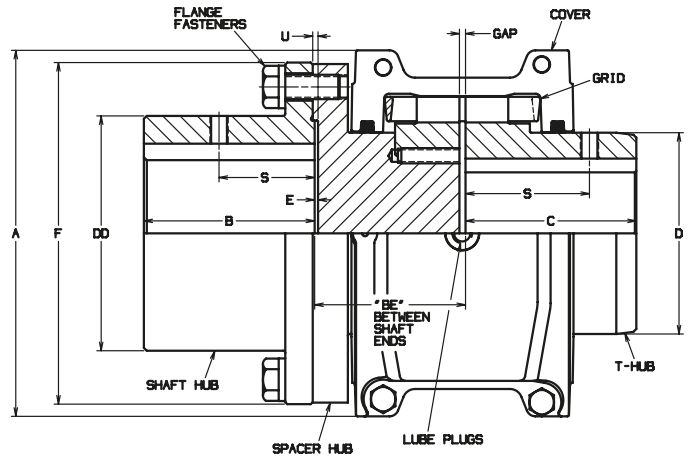


TABLE 1 — TYPE C31 STOCK SPACER HUB LENGTHS (BE=DISTANCE BETWEEN SHAFT ENDS)

| "BE" Between Shaft Ends | ANSI B73.1 Pump Std | Coupling Model | | | | |
|-------------------------|---------------------|----------------|-------|-------|-------|-------|
| | | 1040T | 1050T | 1060T | 1070T | 1080T |
| 3.50 | X | X | | | | |
| 4.38 | X | X | X | | | |
| 5.00 | X | X | X | X | X | |
| 7.25 | X | X | X | X | X | X |

Other "BE" dimensions are available, consult factory

TABLE 2 — TYPE C35 STOCK SPACER HUB LENGTHS (BE=DISTANCE BETWEEN SHAFT ENDS)

| "BE" Between Shaft Ends | ANSI B73.1 Pump Std | Coupling Model | | | | |
|-------------------------|---------------------|----------------|-------|-------|-------|-------|
| | | 1040T | 1050T | 1060T | 1070T | 1080T |
| 3.50 | X | X | X | X | | |
| 5.00 | X | | | | | X |

Caution: To permit removal of T35 shaft hub without moving connected equipment, select a half spacer with dimension BE (in table 2) greater than the dimension B.

CERTIFIED POWER AT ANY SPEED

- Although UL Certified BHP ratings are shown at specific speeds, Clarke couplings can be applied at any intermediate speed. Contact Clarke or your Pump OEM representative to obtain details.