

Chubb Multiway Fire Hose Reel

Fire Systems

Prevent Fire | Detect Fire | Contain Fire | Escape Fire

Product

Chubb Fire Hose Reels – fire fighting equipment for large high risk environments



Product Benefits

- Available in fixed, swinging and recessed versions, with manual or automatic valves
- Mounted on a hinged bracket to allow it to be pulled out a full 180°
- Concealed behind boldly labelled flush fitting aluminium door to complement surrounding decor
- Simple to operate
- Presents no obstruction to escape routes
- One man installation and low cost service
- Suited to large areas or corridors where a 9 litre extinguisher may not provide adequate cover
- Often required by fire certificate or insurers
- Ideal for large high risk environments such as:
 - Schools
 - Hotels
 - Car Parks
 - Warehouses & Workshops
 - Factories
 - Theatres and Concert Halls
 - Large petrochemical areas (using foam attachment)
- Install/maintain to BS 5306:Part 1:1976
- Designed to BS EN671-1

Chubb Multiway Fire Hose Reel

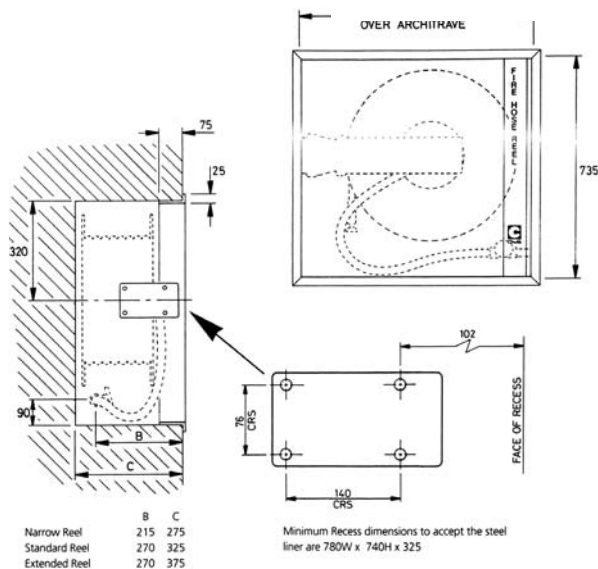
Concealed Hose Reel

Technical Information

Inlet Pressure Min 2.5 bar, max 10 bar
 Inlet Valve Connection 19 or 25mm BSP (F)
 Working Temp Min 1°C, Max 60°C
 Reel Diameter 560mm
 Feed Hose Length 1000mm

Shipping Weight

Excluding Hose 20.5 kg - nominal
 Door & Architrave 9 kg
 Weight of 19mm Hose 0.53 kg/m
 Weight of 25mm Hose 0.66 kg/m
 Fixings 4 x M10 x 80mm long Rawlbolts
 Drill size 18mm



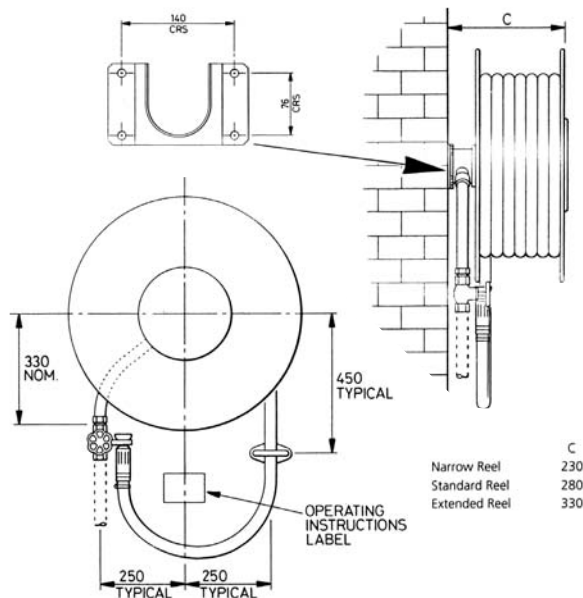
Fixed Hose Reel

Technical Information

Inlet Pressure Min 2.5 bar, max 10 bar
 Inlet Valve Connection 19 or 25mm BSP (F)
 Working Temp Min 1°C, Max 60°C
 Reel Diameter 560mm
 Feed Hose Length 450mm

Shipping Weight

Excluding Hose 11.5 kg - nominal
 Weight of 19mm Hose 0.53 kg/m
 Weight of 25mm Hose 0.66 kg/m
 Fixings 4 x M10 x 80mm long Rawlbolts
 Drill size 18mm



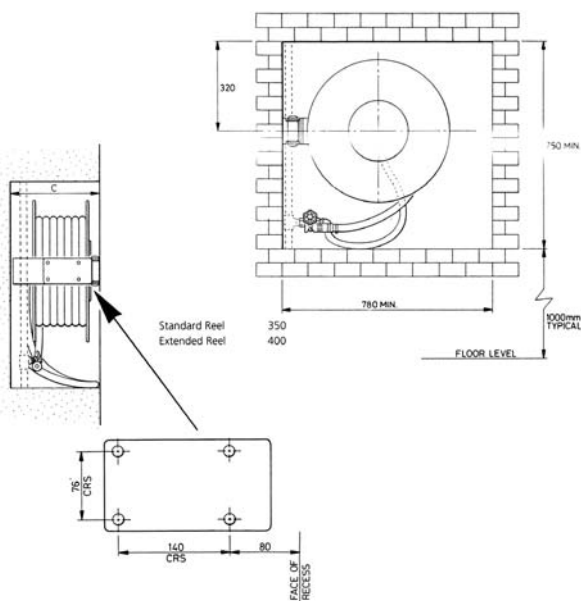
Recessed Hose Reel

Technical Information

Inlet Pressure Min 2.5 bar, max 10 bar
 Inlet Valve Connection 19 or 25mm BSP (F)
 Working Temp Min 1°C, Max 60°C
 Reel Diameter 560mm
 Feed Hose Length 1000mm

Shipping Weight

Excluding Hose 20.5 kg - nominal
 Weight of 19mm Hose 0.53 kg/m
 Weight of 25mm Hose 0.66 kg/m
 Fixings 4 x M10 x 80mm long Rawlbolts
 Drill size 18mm



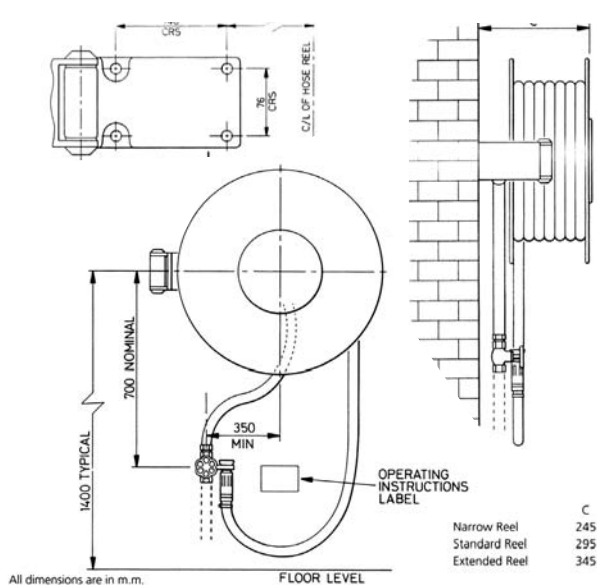
Swinging Hose Reel

Technical Information

Inlet Pressure Min 2.5 bar, max 10 bar
 Inlet Valve Connection 19 or 25mm BSP (F)
 Working Temp Min 1°C, Max 60°C
 Reel Diameter 560mm
 Feed Hose Length 1000mm

Shipping Weight

Excluding Hose 19.5 kg - nominal
 Weight of 19mm Hose 0.53 kg/m
 Weight of 25mm Hose 0.66 kg/m
 Fixings 4 x M10 x 80mm long Rawlbolts
 Drill size 18mm



Chubb Fire, helping you to:
 Prevent Fire | Detect Fire | Contain Fire | Escape Fire

call 0800 32 1666 or visit www.chubb.co.uk

FPS147/08/06