

50L / 100L Foam Mobile Trolley Units

Protecting your world

Model	50L	100L
Height (mm)	~ 1145	~ 1335
Width (mm)	~ 455	~ 550
Depth (mm)	~ 550	~ 670
Weight (kg)	~ 85	~ 150
Cylinder diameter (mm)	315	400
Operating pressure at 20°C	14 bar	13 bar
Test pressure according 97/23/EC	30 bar	30 bar
Burst pressure	> 55 bar	> 55 bar
Temperature range	+0°C +60°C	+0°C +60°C
Extinguishing agent	AFFF	AFFF
Propellant cylinder	CO ₂ 3L (1.3kg CO ₂)	CO ₂ 3L (2kg CO ₂)
Nominal charge	50L	100L
Discharge time	~ 47 sec	~ 94 sec
Jet length	~ 8m	~ 8m
Available antifreeze	-20°C or -30°C	-20°C or -30°C



Class of fire



Fires involving freely burning materials. For example wood, paper, textiles and carbonaceous materials.



Fires involving flammable liquids. For example petrol and spirits. NOT ALCOHOL OR COOKING OIL.

Features

- CE approval
- Comply with EN 1866
- Extremely high ratings on A and B class fires
- Can be used at low temperatures (+0°C)
- Good ergonomics, easy to operate

Technical characteristics

Mobile trolley units are designed for professional use under severe circumstances, resulting in a high level of quality and ease of use.

Ease of mobility is achieved as a result of the large wheels with solid rubber tyres and push bar also ensuring good stability during operation.

Trolley

Detachable from cylinder therefore it has no welded parts giving better safety to the unit and less corrosive points.

Headcap 4" BSP

The headcap is made of brass and equipped with a spring loaded safety valve to prevent an unsafe situation, as a result of overfilling or during accidental unscrewing from the cylinder neck gear.

Discharge device

Equipped with:

- A highly flexible 5m hose complete with pistol
- A specially designed ergonomic patented foam nozzle ensures a steady flow of foam with a very low drop in pressure

Propellant bottle

The carbon dioxide bottle, chromemolybdenum carbon steel, is made according to directive EN 1964-1 ECC.

The powder coating is resistant to scratches and knocks as well as corrosive weather conditions. It is delivered complete with a brass handwheel valve and safety valve.

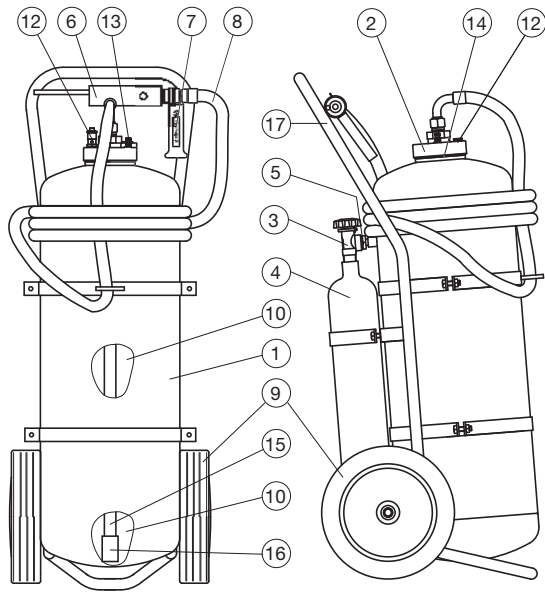
Extinguishing agent

This AFFF foam is specially formulated for best sealing effects. See MSDS for more information.

Maintenance

Maintenance must be made periodically by trained and certified staff.

50L/100L Foam Mobile Trolley Unit



The use of non-original spare parts may cause malfunction.

No.	Description
1	Cylinder PED-CE
2	Cap
3	Handwheel valve
4	3L CO ₂ PED-CE
5	Adaptor for CO ₂ cylinder
6	Foam nozzle light alloy
7	Trigger valve brass 3/4"
8	Discharge hose L 5m
9	Ø 300mm wheels rubber and plastic
10	AFFF
11	Gasket for discharge hose
12	Safety valve 1/4" (22 bar)
13	Check valve
14	Pressure gauge Ø 23
15	Siphon tube
16	3/4 filter + coupling
17	Trolley frame

Call **0800 32 1666**

www.chubb.co.uk

© Chubb Fire & Security Limited 2016

This briefing is intended as general guidance and is not a substitute for detailed advice in specific circumstances. Although great care has been taken in the compilation and preparation of this edition to ensure accuracy, Chubb cannot in any circumstances accept responsibility for errors, omissions or advice given or for any losses arising from reliance upon information contained in this publication.

Chubb Fire & Security