

DATA SHEET

HIGH PRESSURE SHUT-OFF GUNS



Standard Model: 76165

Weep Model: 76168



Model 76165
(Standard)

Model 76168
(Weep)

FEATURES

- Durable, lightweight, shockproof body and trigger.
- Ergonomic construction with smooth trigger action reduces operator fatigue.
- Stainless steel ball and seat assures thousands of continuous cycles.
- Choice of standard or freeze protection “weep” version.
- Special safety latch prevents unintentional operation.

COMMON SPECIFICATIONS

	U.S.	Metric
Maximum Maximum Flow	8.0 gpm	30 lpm
Maximum Pressure	4000 psi	275 bar
Maximum Temperature	195°F	90°C
Inlet Ports	3/8" NPT(F)	3/8" NPT(F)
Discharge Port	1/4" NPT(F)	1/4" NPT(F)
Weight	14.4 oz	0.41 kg
Dimensions	7.60 x 6.96 x 1.26"	193 x 177 x 32 mm

SELECTION

Select a gun to match your system flow and pressure requirements, temperature and function being performed. When operating in freezing conditions, use the weep version.

INSTALLATION

Install the appropriate regulator or unloader when using a shut-off gun to avoid pressure spikes when the gun is shut off. Severe damage can occur to your high pressure system without this safety device.

OPERATION

Flow through the gun occurs by squeezing the trigger on the gun. This activates the actuator rod, lifting the ball off the seat, allowing the pumped liquid to flow through the valve body chamber in the gun. Releasing the trigger shuts off the flow.

A special safety latch locks the gun closed to prevent unintentional operation when left unattended. This latch is red on the standard version and blue on the weep version.

PARTS LIST

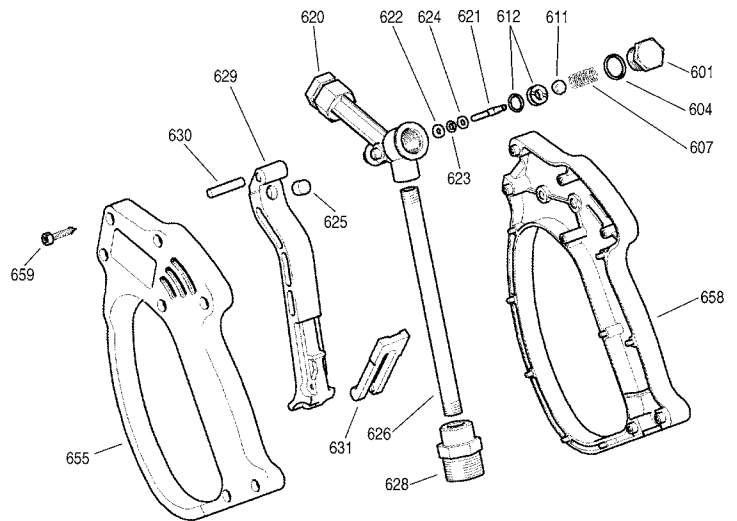
ITEM	PART NUMBER		DESCRIPTION		QTY	
	76165	MATL	76168	MATL		
601	—	BB	—	BB	Nut, Spring Retaining	1
604	33564	NBR	33564	NBR	O-Ring, Nut	1
607	—	S	—	S	Spring	1
611	36099	SSSS	36099	SSSS	Ball, 5/16"	1
612	39051	NBR	31636	NBR	Seat, w/O-Ring	1
620	—	BB	—	BB	Body w/Discharge Fitting [1/4" NPT(F)]	1
621	31819	S	31819	S	Rod, Actuator	1
622	35074	PTFE	35074	PTFE	Back-up-Ring, Actuator Rod	1
623	35020	FPM	35020	FPM	O-Ring, Actuator Rod	1
624	39004	S	39004	S	Washer, Actuator Rod	1
625	—	NY	—	NY	Striker	1
626	—	S	—	S	Pipe, Inlet	1
628	—	BB	—	BB	Fitting, Inlet [3/8" NPT(F)]	1
629	—	NY	—	NY	Trigger, Black	1
630	39291	BB	39291	BB	Pin, Trigger	1
631	—	NY	—	—	Latch, Safety, Red (Model 76165)	1
	—	—	—	NY	Latch, Safety, Blue (Model 76168)	1
655	—	NY	—	NY	Handle, Gun, Left	1
658	—	NY	—	NY	Handle, Gun, Right	1
659	32877	STZP	30409	S	Screw, Self Threading (M3.5x18)	7
668	39444	—	39035	—	Kit, Repair (Incls: 604, 611, 612, 621, 622, 623, 624)	1

Bold print part numbers are unique to a particular gun model.

Italics are optional items.

MATERIAL CODES (Not Part of Part Number): BB=Brass FPM=Fluorocarbon
 NBR=Medium Nitrile (Buna-N) NY=Nylon PTFE=Pure Polytetrafluoroethylene
 S=304SS SSSS=440SS STZP=Steel/Zinc Plated

EXPLODED VIEW



TROUBLESHOOTING

Water leaking out the discharge of the gun

- Object lodged between the seat and ball
- Seat worn
- O-Ring under seat worn

Water leaking out the lever area

- O-Ring around actuator rod worn

SKIN PUNCTURE HAZARD

Do not allow spray to contact any part of the body or animals. Pumped liquids under high pressure can pierce skin and underlying tissue or can deflect debris leading to serious personal injury or death.

1. Relieve all line pressure in the inlet line to the pump and discharge line from the pump before performing any maintenance on the gun.
2. When high pressure gun is not in use, set safety trigger lock (safety latch) to avoid accidental high pressure operation and personal injury or property damage.

CAUTIONS AND WARNINGS

All High Pressure Systems require a primary pressure regulating device (i.e. regulator, unloader) and a secondary pressure relief device (i.e. pop-off valve, relief valve). Failure to install such relief devices could result in personal injury or damage to pump or property. Cat Pumps does not assume any liability or responsibility for the operation of a customer's high pressure system.

Read all CAUTIONS and WARNINGS before commencing service or operation of any high pressure system. The CAUTIONS and WARNINGS are included in each service manual and with each Accessory Data sheet. CAUTIONS and WARNINGS can also be viewed online at www.catpumps.com/cautions-warnings or can be requested directly from Cat Pumps.

WARRANTY

View the Limited Warranty on-line at www.catpumps.com/warranty.



CAT PUMPS

1681 - 94TH LANE N.E. MINNEAPOLIS, MN 55449-4324
 PHONE (763) 780-5440 — FAX (763) 780-2958
 e-mail: techsupport@catpumps.com
www.catpumps.com