

# DATA SHEET

## HIGH PRESSURE SHUT-OFF GUN



**Brass Gun Model:** **39415**

**Brass Gun/Steel Lance Model:** **39440**



Model 39415

### FEATURES

- Durable, lightweight, shockproof body and trigger.
- Ergonomic construction with smooth trigger action reduces operator fatigue.
- Stainless steel ball and seat assures thousands of continuous cycles.
- Special safety latch prevents unintentional operation.
- Stainless steel internal parts and forged inlet housing for durability.

### COMMON SPECIFICATIONS

	U.S.	Metric
Maximum Flow	32 gpm	120 lpm
Maximum Pressure	1750 psi	120 bar
Maximum Temperature	140° F	60° C
Inlet Port	1/2" BSP(F)	1/2" BSP(F)
Discharge Port (Gun)	1/2" BSP(F)	1/2" BSP(F)
Discharge Port (Lance)	1/4" NPT(F)	1/4" NPT(F)
Weight (Gun Only)	2.75 lbs.	1.25 kg
Weight (Gun and Lance)	5.54 lbs.	2.51 kg
Dimensions (Gun Only)	8.62 x 8.50 x 1.50"	219 x 216 x 38 mm
Dimensions (Gun and Lance)	8.50 x 40.50 x 1.50"	216 x 1028 x 38 mm

### SELECTION

Select a gun to match your system flow and pressure requirements, temperature and function being performed. When operating in freezing conditions, use the weep version.

### INSTALLATION

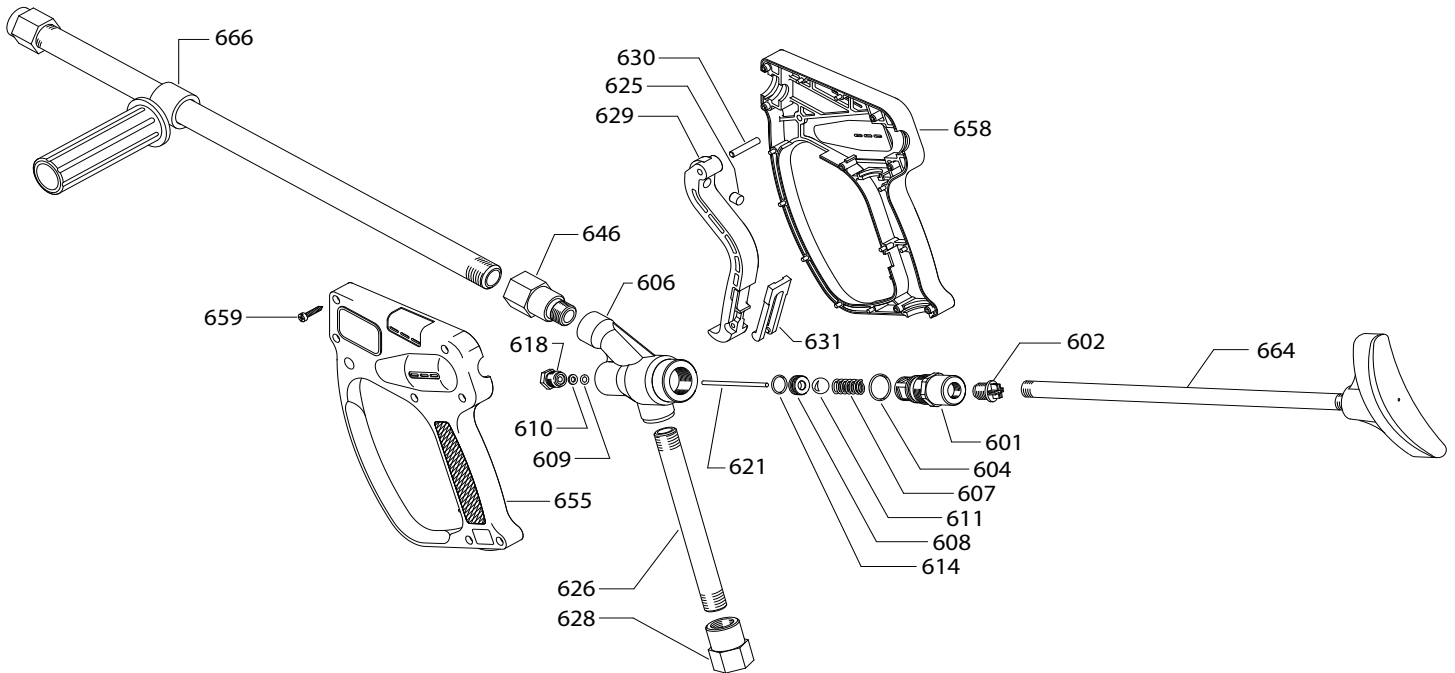
Install the appropriate regulator or unloader when using a shut-off gun to avoid pressure spikes when the gun is shut off. Severe damage can occur to your high pressure system without this safety device.

### OPERATION

Flow through the gun occurs by squeezing the trigger on the gun. This activates the actuator rod, lifting the ball off the seat, allowing the pumped liquid to flow through the valve body chamber in the gun. Releasing the trigger shuts off the flow.

A special safety latch locks the gun closed to prevent unintentional operation when left unattended. This latch is red on the standard version and blue on the weep version.

## EXPLODED VIEW



## PARTS LIST

ITEM	PART NUMBER	DESCRIPTION	QTY
601	—	BB Plug, Spring	1
602	39401	NY Plug, Rear [1/4" BSP(M)]	1
604	32926	NBR O-Ring, Plug 85D	1
606	—	BB Body	1
607	—	S Spring	1
608	—	S Seat	1
609	35020	FPM O-Ring, Rod	1
610	35074	PTFE Backup-Ring, Rod	1
611	76550	SSS Ball, Seat	1
614	33043	NBR O-Ring, Seat	1
618	31001	BB Guide, Rod	1
621	—	S Rod, Actuator	1
625	—	S Striker	1
626	—	S Pipe, Inlet	1
628	—	S Fitting, Inlet [1/2" BSP(F)]	1
629	—	NY Trigger (Black)	1
630	—	BB Pin, Trigger	1

ITEM	PART NUMBER	DESCRIPTION	QTY
631	—	NY Latch, Safety (Red)	1
646	—	S Fitting, Discharge [1/2" BSP(F)]	1
655	—	NY Handle, Left Half	1
658	—	NY Handle, Right Half	1
659	—	S Screw, (M3.5 x 18)	7
664	39414	— <i>Shoulder Support</i>	1
665	31860	— <i>Assy, Handle (Incls: 655,658,659)</i>	1
666	32440	STZP <i>Assy, Lance/Grip (32")</i>	1
667	31839	— <i>Assy, Trigger (Incls: 625,629,630,631)</i>	1
668	31837	NBR* <i>Kit, Gun Repair (Incls: 604,607,608,609,610,611,614,621)</i>	1

*Italics are optional items.*

\*Review material codes for individual parts (FPM O-Ring is used)

MATERIAL CODES: (Not Part of Part Number): BB=Brass FPM=Fluorocarbon  
 NBR=Medium Nitrile (Buna-N) NY=Nylon PTFE=Pure Polytetrafluoroethylene  
 S=304SS SSS=416SS STZP=Steel, Zinc Plated

## SKIN PUNCTURE HAZARD

**Do not allow spray to contact any part of the body or animals. Pumped liquids under high pressure can pierce skin and underlying tissue or can deflect debris leading to serious personal injury or death.**

1. Relieve all line pressure in the inlet line to the pump and discharge line from the pump before performing any maintenance on the gun.
2. When high pressure gun is not in use, set safety trigger lock (safety latch) to avoid accidental high pressure operation and personal injury or property damage.

### ⚠ CAUTIONS AND WARNINGS

All High-Pressure Systems require a primary pressure regulating device (i.e. regulator, unloader) and a secondary pressure relief device (i.e. pop-off valve, relief valve). Failure to install such relief devices could result in personal injury or damage to pump or property. Cat Pumps does not assume any liability or responsibility for the operation of a customer's high-pressure system.

Read all CAUTIONS and WARNINGS before commencing service or operation of any high-pressure system. The CAUTIONS and WARNINGS are included in each Service Manual and with each Accessory Data sheet. CAUTIONS and WARNINGS can also be viewed online at [www.catpumps.com/cautions-warnings](http://www.catpumps.com/cautions-warnings) or can be requested directly from Cat Pumps.

### WARRANTY

View the Limited Warranty on-line at [www.catpumps.com/warranty](http://www.catpumps.com/warranty).

## TROUBLESHOOTING

Water leaking out the discharge of the gun

- Object lodged between the seat and ball
- Seat worn
- O-Ring under seat worn

Water leaking out the lever area

- O-Ring around actuator rod worn