



## Stainless Steel Pressure Compensating Shut-Off Gun

# 33600

### FEATURES

- Durable Z-Nylon body with new heat resistant trigger provides longer life and less breakage.
- Quality construction stainless steel tapered seat and valve assures thousands of continuous cycles.
- Unique valve design with internal balanced pressure and ergonomic trigger design permits easy on and off operation.

**SELECTION:** A gun should be selected to match the system flow and pressure requirements, temperature and function being performed. This special industrial gun is designed to minimize operator fatigue in high pressure applications.

**INSTALLATION:** If the system is a **single gun system** and the drive source will continue to run while the gun is intermittently shut-off, a pressure unloader should be installed. If **multiple guns** are in the system, either a pressure regulator or a special multiple-gun regulating unloader should be installed. In multiple gun systems, the guns should be reasonably synchronized in flow to avoid large amounts of by-pass from unused guns for prolonged periods. This may prematurely fatigue the pressure relief device or generate excessive heat in the by-pass mode.

**OPERATION:** Flow through the gun occurs by squeezing the trigger on the gun. This activates the actuator rod, relieving the pressure on the spring and permitting the

### SPECIFICATIONS

	U.S. Measure	Metric Measure
Maximum Flow.....	10.5 GPM	(40 L/M)
Maximum Pressure .....	5800 PSI	(400 BAR)
Maximum Temperature.....	320°F	(160°C)
Inlet Port.....	3/8" NPTF	(3/8" NPTF)
Outlet Port.....	1/4" NPTF	(1/4" NPTF)
Weight.....	19.6 oz.	(0.557 kg)
Dimensions .....	8.25x5.38x1.25"	(210x137x32 mm)

Gun is stamped with a European safety pressure. Use only at above specifications to assure proper gun life and performance.

valve to ease off the seat. The unique tapered design of the valve and seat permits a smooth, balanced internal pressure, minimizing tension on the trigger. Releasing the trigger shuts off the flow by forcing the actuator rod to close the seat and valve.

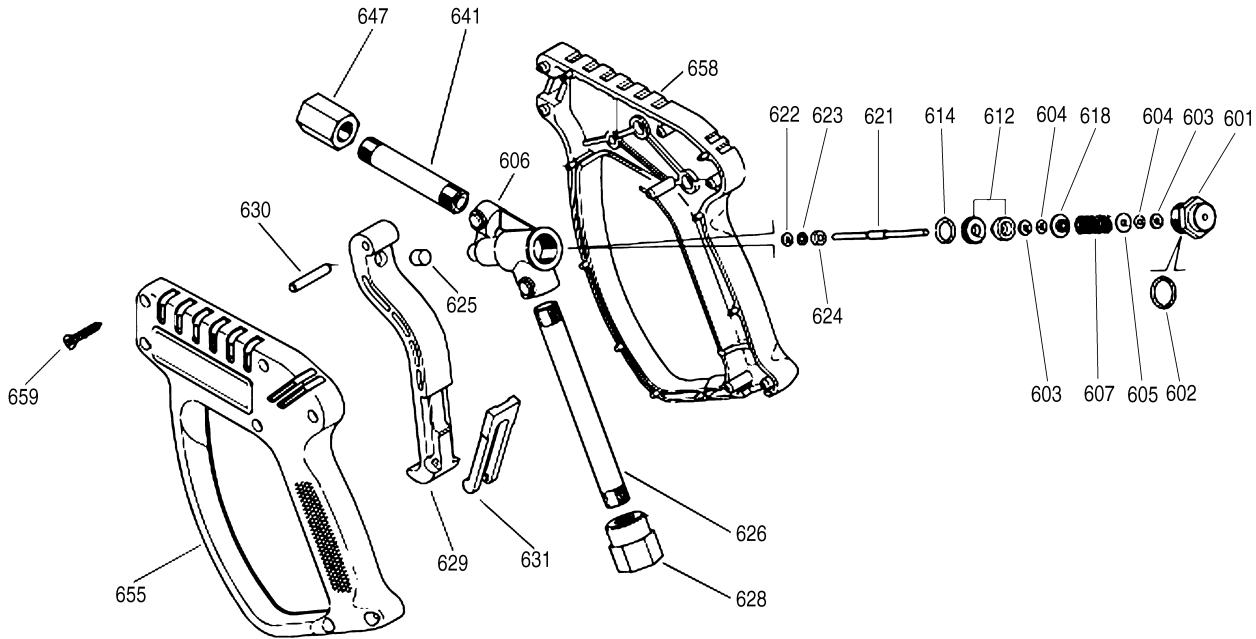
For safety and protection of the pump and system, a pressure relief device must be used with a high pressure gun. When the gun is shut off, pressure spikes could result in severe damage to the pump or other components in the system without this device. Carefully examine the functioning of the system to determine the best type of relief valve to be used.

#### **⚠ WARNING**

**Severe injury can occur with high pressure spray.  
Do not allow spray to contact any part of body.**

*“Customer confidence is our greatest asset”*

# EXPLODED VIEW



## PARTS LIST

ITEM	P/N	MATL	DESCRIPTION	QTY	ITEM	P/N	MATL	DESCRIPTION	QTY
601	39844	S	Plug (M16)	1	630	—	BB	Pin, Trigger	1
602	—	NBR	O-Ring, Plug	1	631	—	NY	Latch, Safety	1
603	35074	PTFE	Back-up-Ring, Plug	2	641	—	S	Pipe, Discharge (1/4" NPT)	1
604	35020	FPM	O-Ring, Plug	2	647	39040	SSS	Fitting, Discharge (1/4" NPT)	1
605	39058	S	Washer, Seal	1	655	—	Z	Handle, Left Half, <b>RED</b>	1
606	—	S	Housing	1	658	—	Z	Handle, Right Half, <b>RED</b>	1
607	39045	SS	Spring, Valve	1	659	—	STZP	Screw, Self Threading (M3.5x18)	7
612	32897	SS	Valve, Seat	1	665	39028	Z	Assembly, Handle, <b>RED</b> , Prior to 9/97 (Incls: 655,658,659)	1
614	—	FPM	O-Ring, Seat - 85D	1	667	39029	PET	Assembly, Trigger, <b>BLACK</b> , Prior to 9/97 (Incls:625,629,630,631)	1
618	39059	S	Retainer, Spring	1		39629	PET	Assembly, Trigger, <b>BLACK</b> , After to 9/97 (Incls:625,629,630,631)	1
621	39856	SSS	Rod, Actuator	1	668	32860		Kit, Gun Repair, Prior to 9/97 (Incls: 603,604,612,614,621,622,623)	1
622	35074	PTFE	Back-up-Ring, Rod	1		39860		Kit, Gun Repair, After 9/97 (Incls: 602,603,604,612,614,621,622,623)	1
623	35020	FPM	O-Ring, Rod	1					
624	39004	SS	Washer, Actuator Rod	1					
625	—	D	Striker	1					
626	—	SS	Pipe, Inlet (3/8" NPT)	1					
628	39837	SSS	Fitting, Inlet (3/8" NPT)	1					
629	—	PET	Trigger	1					

*Italics are optional items.*

MATERIAL CODES (Not Part of Part Number): BB=Brass D=Acetal FPM=Fluorocarbon NY=Nylon PET=Poly (Ethylene Terephthalate)  
PTFE=Pure Polytetrafluoroethylene S=304SS SS=316SS SSS=416SS STZP=Steel/Zinc Plated Z=Z-Nylon

## TROUBLESHOOTING

- |  |   |
|--|---|
| <p>Water leaking out the discharge of the gun</p> <p>Water leaking out the trigger area</p> <p>Water leaking out back of gun</p> | <ul style="list-style-type: none"> <li>● Object lodged between the seat and ball.</li> <li>● Valve or seat pitted or worn.</li> <li>● O-Ring on seat worn or cut.</li> <li>● O-Ring on actuator rod worn or cut.</li> <li>● O-Ring on rear plug worn or cut.</li> </ul> |
|--|---|

## WARRANTY

### 90 Day Warranty

Refer to complete CAT PUMPS Warranty for further information.

## World Headquarters

### CAT PUMPS

1681 - 94th Lane N.E. Minneapolis, MN 55449-4324

Phone (763) 780-5440 — FAX (763) 780-2958

e-mail: sales@catpumps.com

www.catpumps.com

## International Inquiries

FAX (763) 785-4329

e-mail: intlsales@catpumps.com



*The Pumps with Nine Lives*

## CAT PUMPS (U.K.) LTD.

1 Fleet Business Park, Sandy Lane, Church Crookham, Fleet

Hampshire GU52 8BF, England

Phone Fleet 44 1252-622031 — Fax 44 1252-626655

e-mail: sales@catpumps.co.uk

## N.V. CAT PUMPS INTERNATIONAL S.A.

Heiveldekens 6A, 2550 Kontich, Belgium

Phone 32-3-450.71.50 — Fax 32-3-450.71.51

e-mail: cpi@catpumps.be www.catpumps.be

## CAT PUMPS DEUTSCHLAND GmbH

Buchwiese 2, D-65510 Idstein, Germany

Phone 49 6126-9303 0 — Fax 49 6126-9303 33

e-mail: catpumps@t-online.de www.catpumps.de