



## Square Insulated Dual Lance

**S.S. Model**                    **33200**  
**Zinc Model**                    **33201**

### SPECIFICATIONS

	U.S. Measure	Metric Measure
<b>MODEL 33200</b>		
Maximum Flow .....	10.5 GPM	(40 L/M)
Maximum Pressure .....	3650 PSI	(250 BAR)
Maximum Temperature .....	320°F	(160°C)
Inlet Fitting .....	1/4" BSPF	(1/4" BSPF)
Nozzle Fitting (2) .....	1/4" NPTF	(1/4" NPTF)
Weight .....	42.3 oz.	(1.20 kg)
Overall Length .....	43"	(1090 mm)

<b>MODEL 33201</b>		
Maximum Flow .....	10.5 GPM	(40 L/M)
Maximum Pressure .....	3650 PSI	(250 BAR)
Maximum Temperature .....	320°F	(160°C)
Inlet Fitting .....	1/4" BSPF	(1/4" BSPF)
Nozzle Fitting (2) .....	1/4" NPTF	(1/4" NPTF)
Weight .....	38.1 oz.	(1.08 kg)
Overall Length .....	35"	(890 mm)

Lance is stamped with a European safety pressure. Use only at above specifications to assure proper lance life and performance.

### FEATURES

- Ventilated square nylon insulator for operator comfort and safety.
- Front insulated adjustment handle for low to high pressure nozzle selection.
- Optional length for specialized cleaning.
- Ideal for use with adjustable chemical injector.

**SELECTION:** Select a lance that matches the system flow and pressure to assure safety during operation. Select standard Zinc plated or Stainless Steel for longer life.

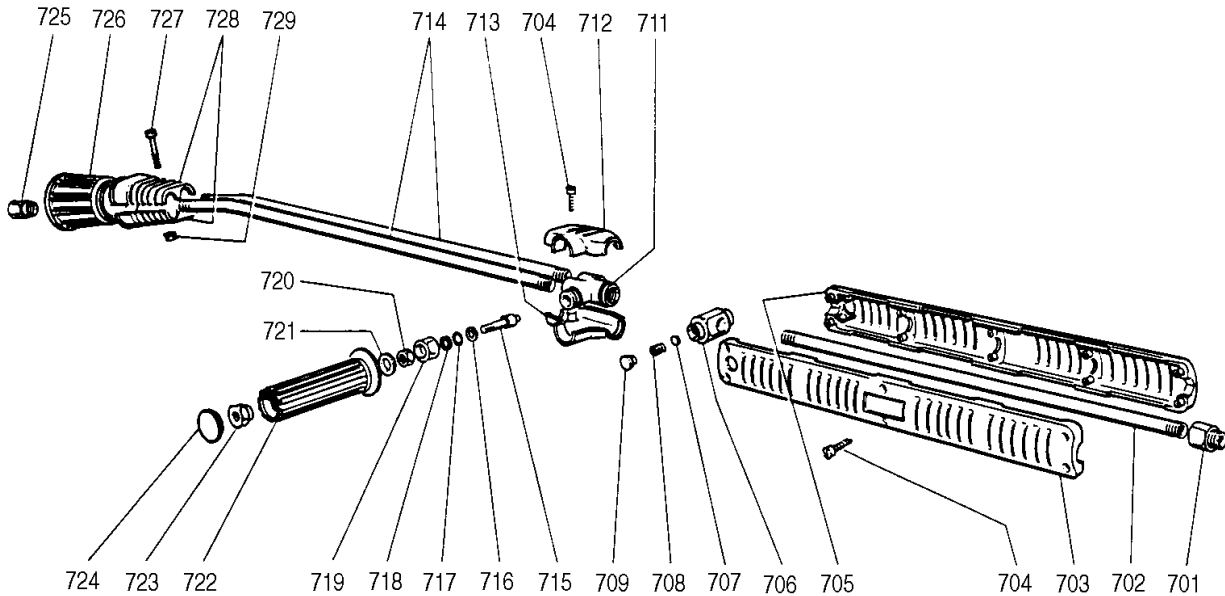
**INSTALLATION:** Install these single lances to any 1/4" gun. Use PTFE thread tape or pipe thread sealant to assure a leak proof fit.

**OPERATION:** Flow goes through the lance as soon as the trigger on the gun is squeezed.

**⚠ WARNING**

**Severe injury can occur with high pressure spray.  
Do not allow spray to contact any part of body.**

## EXPLODED VIEW



## PARTS LIST

ITEM	P/N	MATL	DESCRIPTION	QTY	ITEM	P/N	MATL	DESCRIPTION	QTY
701	32868	BB	Adapter (1/4" BSPF)	1	718	32873	PTFE	Back-Up-Ring	1
702	—	SS	Tube (1/4")	1	719	—	BB	Nut (M18)	1
	—	ZP	Tube (1/4")	1	720	81109	STZP	Nut (M8 x 1.25))	1
703	—	NY	Cover, Lance - Left	1		126521	STCP R	Nut (M8 x 1.25))	1
704	—	STZP	Screw, Self-Threading (M3.5 x 18)	7	721	—	STZP	Washer (M18)	1
705	—	NY	Cover, Lance - Right	1	722	—	NY	Handle	1
706	—	BB	Frame, Cover	1	723	—	BB	Plug, Handle	1
707	32869	CU	Plug	1	724	—	NY	Plug, Grip	1
708	32870	STZP	Screw, Cover (M10)	1	725	32053	STZP	Holder, Nozzle (1/4" NPTF)	2
709	32871	NY	Plug, Cover	1	726	—	RBR	Guard, Nozzle	1
711	—	BB	Housing	1	727	—	STL	Screw (M4 x 20)	1
712	—	NY	Insulator, Lance - Upper	1	728	—	NY	Protector Extension	1
713	—	NY	Insulator, Lance - Lower	1	729	—	STL	Nut (M4)	1
714	—	ZP	Tube (1/4")	2	735	32864	NY	Guard, Nozzle Assy (Incls: 726-729)	1
	—	SS	Tube (1/4")	2	736	32865	—	Insulator, Assy (Incls: 703-706)	1
715	33694	S	Valve, Needle	1	737	32867	—	Cover, Housing Assy (Incls: 704, 712, 713)	1
716	—	STZP	Spacer, Valve	1	738	32866	NY	Handle, Assy (Incls: 715-724)	1
717	—	FPM	O-Ring	1	740	39012	NBR	Kit, O-Ring (Incls: 716, 717, 718)	1

*Italics are optional items. R Components comply with RoHS Directive.*

Material Codes (Not Part of Part No.): BB=Brass CU=Copper FPM=Fluorocarbon

NBR=Medium Nitrile (Buna-N) NY=Nylon PTFE=Pure Polytetrafluoroethylene RBR=Rubber

S=304SS SS=316SS STL=Steel STCP=Steel/Chrome Plated STZP=Steel/Zinc Plated ZP=Zinc Plated

## TROUBLESHOOTING

- |                                  |  |
|----------------------------------|--|
| Leaking at gun nozzle connection | • Check fitting for proper sealant and reconnect to gun.                           |
| Leaking at nozzle                | • Check for proper sealant at lance and nozzle protector connection and reconnect. |
| Broken nozzle protector          | • Replace to assure nozzle life.   |

## WARRANTY

### 90 Day Warranty

Refer to complete CAT PUMPS Warranty for further information.

## World Headquarters

### CAT PUMPS

1681 - 94th Lane N.E. Minneapolis, MN 55449-4324

Phone (763) 780-5440 — FAX (763) 780-2958

e-mail: techsupport@catpumps.com

www.catpumps.com

## International Inquiries

FAX (763) 785-4329

e-mail: intl@catpumps.com



The Pumps with Nine Lives

## CAT PUMPS (U.K.) LTD.

1 Fleet Business Park, Sandy Lane, Church Crookham

FLEET, Hampshire, GU52 8BF, England

Phone Fleet 44 1252-622031 — Fax 44 1252-626655

e-mail: sales@catpumps.co.uk

## N.V. CAT PUMPS INTERNATIONAL S.A.

Heiveldkens 6A, B-2550 Kontich, Belgium

Phone 32-3-450.71.50 — Fax 32-3-450.71.51

e-mail: cpi@catpumps.be www.catpumps.be

## CAT PUMPS DEUTSCHLAND GmbH

Buchwiese 2, D-65510 Idstein, Germany

Phone 49 6126-9303 0 — Fax 49 6126-9303 33

e-mail: catpumps@t-online.de www.catpumps.de